

Miniature reversible contactors Ex9CSR



- Reversible combinations of miniature contactors
- Tested according to IEC / EN 60947-4-1
- 3 and 4-pole versions
- Rated current AC-3 6, 9 and 12 A at 400 V
- Coil control voltage 24 — 415 V AC
- Conditional short circuit current Iq 50 kA
- Mechanical interlock
- Mounting onto device rail (DIN) 35 mm or onto panel

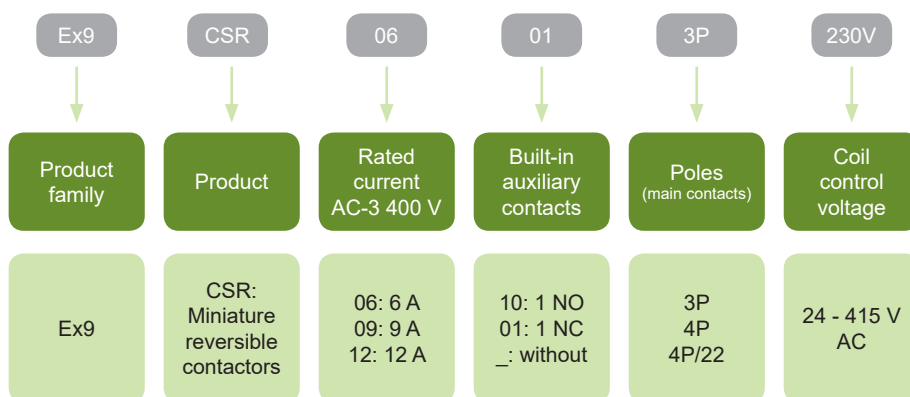
Miniature reversible contactors Ex9CSR brings excellent electric parameters in the form of very compact device. These contactors are used mainly for switching of asynchronous motors with possibility of change of rotation direction. They can also be used for switching of two circuits when it is necessary to ensure that maximum one circuit is connected.

The combinations are equipped with mechanical interlock. Additional electrical interlock of control voltages (e.g. for EN 60204) can be implemented by means of auxiliary contacts AX42 or built-in auxiliary contacts.

Thanks to compact dimensions, Ex9CSR contactors are ideal solution for space limited installations.

The same function can be achieved by combination of two contactors Ex9CS with mechanical interlock MIT41.

Type Key

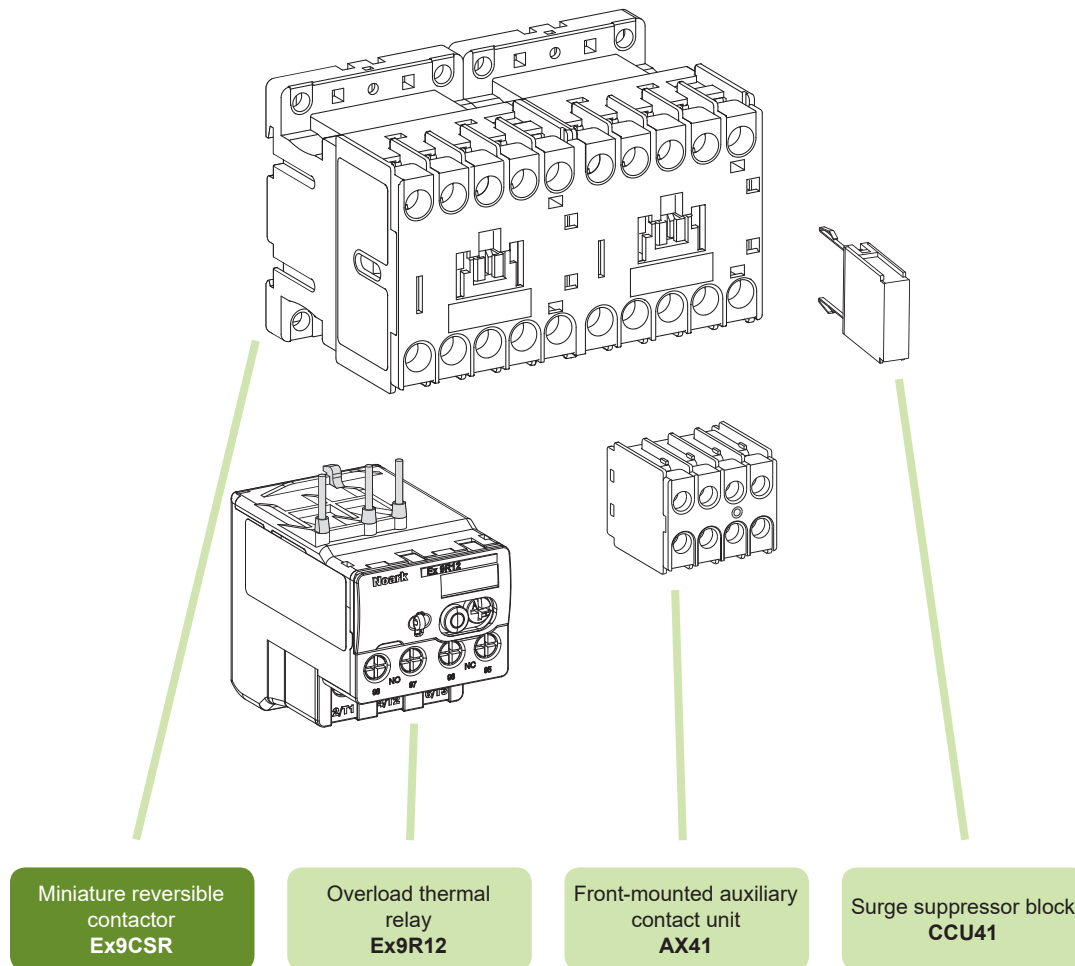


Certification marks



Miniature reversible contactors Ex9CSR

Accessories



Auxiliary contacts AX41

Overload thermal relays Ex9R12

Surge suppressor block CCU41

Miniature reversible contactors Ex9CSR

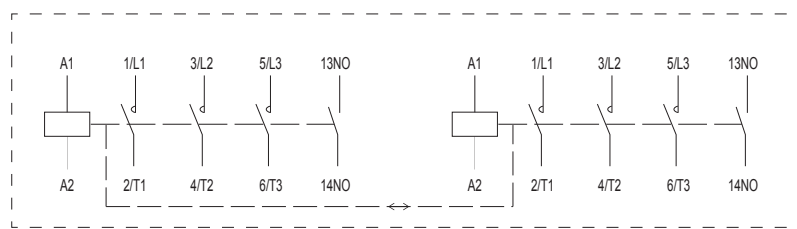
Rated current 6 A, 3-pole

- Miniature reversible version of contactor
- Mounting onto device (DIN) rail 35 mm or onto panel
- Front-mounted auxiliary contacts AX41.. can be used
- Can be combined with overload relays Ex9R12
- A number of built-in auxiliary contacts given belongs to single contactor unit in the pair

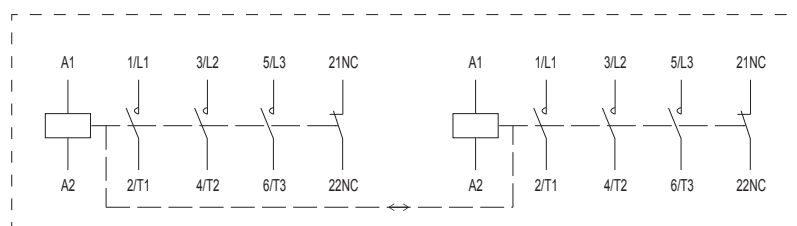


Control voltage	AC-3 I_e	Frame size	Poles	Auxiliary contacts	Article No.	Type	Packing
415 V AC	6 A	S12	3	1 NO	104506	Ex9CSR06 10 3P 415V	1/72
400 V AC	6 A	S12	3	1 NO	104507	Ex9CSR06 10 3P 400V	1/72
380 V AC	6 A	S12	3	1 NO	104508	Ex9CSR06 10 3P 380V	1/72
240 V AC	6 A	S12	3	1 NO	104511	Ex9CSR06 10 3P 240V	1/72
230 V AC	6 A	S12	3	1 NO	104512	Ex9CSR06 10 3P 230V	1/72
220 V AC	6 A	S12	3	1 NO	104513	Ex9CSR06 10 3P 220V	1/72
127 V AC	6 A	S12	3	1 NO	104514	Ex9CSR06 10 3P 127V	1/72
110 V AC	6 A	S12	3	1 NO	104515	Ex9CSR06 10 3P 110V	1/72
48 V AC	6 A	S12	3	1 NO	104504	Ex9CSR06 10 3P 48V	1/72
42 V AC	6 A	S12	3	1 NO	104505	Ex9CSR06 10 3P 42V	1/72
36 V AC	6 A	S12	3	1 NO	104509	Ex9CSR06 10 3P 36V	1/72
24 V AC	6 A	S12	3	1 NO	104510	Ex9CSR06 10 3P 24V	1/72
415 V AC	6 A	S12	3	1 NC	104518	Ex9CSR06 01 3P 415V	1/72
400 V AC	6 A	S12	3	1 NC	104519	Ex9CSR06 01 3P 400V	1/72
380 V AC	6 A	S12	3	1 NC	104520	Ex9CSR06 01 3P 380V	1/72
240 V AC	6 A	S12	3	1 NC	104523	Ex9CSR06 01 3P 240V	1/72
230 V AC	6 A	S12	3	1 NC	104524	Ex9CSR06 01 3P 230V	1/72
220 V AC	6 A	S12	3	1 NC	104525	Ex9CSR06 01 3P 220V	1/72
127 V AC	6 A	S12	3	1 NC	104526	Ex9CSR06 01 3P 127V	1/72
110 V AC	6 A	S12	3	1 NC	104527	Ex9CSR06 01 3P 110V	1/72
48 V AC	6 A	S12	3	1 NC	104516	Ex9CSR06 01 3P 48V	1/72
42 V AC	6 A	S12	3	1 NC	104517	Ex9CSR06 01 3P 42V	1/72
36 V AC	6 A	S12	3	1 NC	104521	Ex9CSR06 01 3P 36V	1/72
24 V AC	6 A	S12	3	1 NC	104522	Ex9CSR06 01 3P 24V	1/72

Wiring diagrams



Ex9CSR 3P 1NO



Ex9CSR 3P 1NC

Miniature reversible contactors Ex9CSR

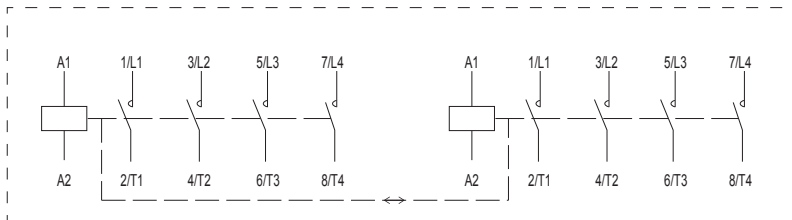
Rated current 6 A, 4-pole

- Miniature reversible version of contactor
- Mounting onto device (DIN) rail 35 mm or onto panel
- Front-mounted auxiliary contacts AX41.. can be used
- A number of built-in auxiliary contacts given belongs to single contactor unit in the pair

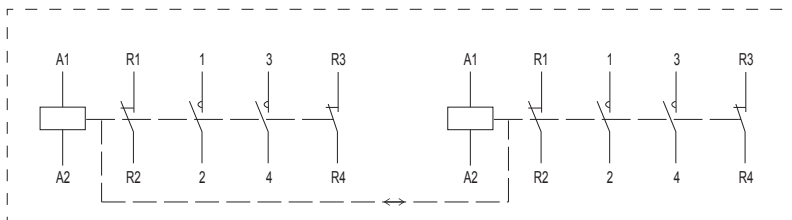


Control voltage	AC-3 I_e	Frame size	Poles	Auxiliary contacts	Article No.	Type	Packing
415 V AC	6 A	S12	4P	-	104542	Ex9CSR06 4P 415V	1/72
400 V AC	6 A	S12	4P	-	104543	Ex9CSR06 4P 400V	1/72
380 V AC	6 A	S12	4P	-	104544	Ex9CSR06 4P 380V	1/72
240 V AC	6 A	S12	4P	-	104547	Ex9CSR06 4P 240V	1/72
230 V AC	6 A	S12	4P	-	104548	Ex9CSR06 4P 230V	1/72
220 V AC	6 A	S12	4P	-	104549	Ex9CSR06 4P 220V	1/72
127 V AC	6 A	S12	4P	-	104550	Ex9CSR06 4P 127V	1/72
110 V AC	6 A	S12	4P	-	104551	Ex9CSR06 4P 110V	1/72
48 V AC	6 A	S12	4P	-	104540	Ex9CSR06 4P 48V	1/72
42 V AC	6 A	S12	4P	-	104541	Ex9CSR06 4P 42V	1/72
36 V AC	6 A	S12	4P	-	104545	Ex9CSR06 4P 36V	1/72
24 V AC	6 A	S12	4P	-	104546	Ex9CSR06 4P 24V	1/72
415 V AC	6 A	S12	2+2	-	104530	Ex9CSR06 4P/22 415V	1/72
400 V AC	6 A	S12	2+2	-	104531	Ex9CSR06 4P/22 400V	1/72
380 V AC	6 A	S12	2+2	-	104532	Ex9CSR06 4P/22 380V	1/72
240 V AC	6 A	S12	2+2	-	104535	Ex9CSR06 4P/22 240V	1/72
230 V AC	6 A	S12	2+2	-	104536	Ex9CSR06 4P/22 230V	1/72
220 V AC	6 A	S12	2+2	-	104537	Ex9CSR06 4P/22 220V	1/72
127 V AC	6 A	S12	2+2	-	104538	Ex9CSR06 4P/22 127V	1/72
110 V AC	6 A	S12	2+2	-	104539	Ex9CSR06 4P/22 110V	1/72
48 V AC	6 A	S12	2+2	-	104528	Ex9CSR06 4P/22 48V	1/72
42 V AC	6 A	S12	2+2	-	104529	Ex9CSR06 4P/22 42V	1/72
36 V AC	6 A	S12	2+2	-	104533	Ex9CSR06 4P/22 36V	1/72
24 V AC	6 A	S12	2+2	-	104534	Ex9CSR06 4P/22 24V	1/72

Wiring diagrams



Ex9CSR 4P



Ex9CSR 4P/22

Miniature reversible contactors Ex9CSR

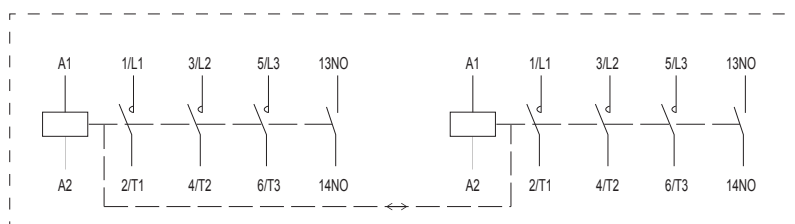
Rated current 9 A, 3-pole

- Miniature reversible version of contactor
- Mounting onto device (DIN) rail 35 mm or onto panel
- Front-mounted auxiliary contacts AX41.. can be used
- Can be combined with overload relays Ex9R12
- A number of built-in auxiliary contacts given belongs to single contactor unit in the pair

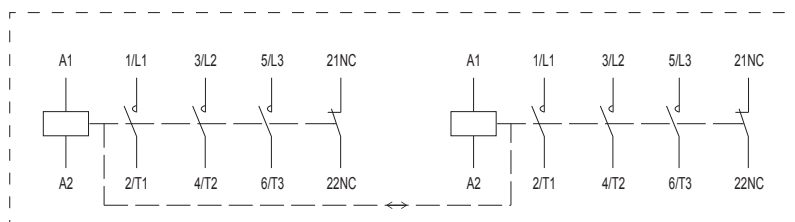


Control voltage	AC-3 I_e	Frame size	Poles	Auxiliary contacts	Article No.	Type	Packing
415 V AC	9 A	S12	3P	1 NO	104554	Ex9CSR09 10 3P 415V	1/72
400 V AC	9 A	S12	3P	1 NO	104555	Ex9CSR09 10 3P 400V	1/72
380 V AC	9 A	S12	3P	1 NO	104556	Ex9CSR09 10 3P 380V	1/72
240 V AC	9 A	S12	3P	1 NO	104559	Ex9CSR09 10 3P 240V	1/72
230 V AC	9 A	S12	3P	1 NO	104560	Ex9CSR09 10 3P 230V	1/72
220 V AC	9 A	S12	3P	1 NO	104561	Ex9CSR09 10 3P 220V	1/72
127 V AC	9 A	S12	3P	1 NO	104562	Ex9CSR09 10 3P 127V	1/72
110 V AC	9 A	S12	3P	1 NO	104563	Ex9CSR09 10 3P 110V	1/72
48 V AC	9 A	S12	3P	1 NO	104552	Ex9CSR09 10 3P 48V	1/72
42 V AC	9 A	S12	3P	1 NO	104553	Ex9CSR09 10 3P 42V	1/72
36 V AC	9 A	S12	3P	1 NO	104557	Ex9CSR09 10 3P 36V	1/72
24 V AC	9 A	S12	3P	1 NO	104558	Ex9CSR09 10 3P 24V	1/72
415 V AC	9 A	S12	3P	1 NC	104566	Ex9CSR09 01 3P 415V	1/72
400 V AC	9 A	S12	3P	1 NC	104567	Ex9CSR09 01 3P 400V	1/72
380 V AC	9 A	S12	3P	1 NC	104568	Ex9CSR09 01 3P 380V	1/72
240 V AC	9 A	S12	3P	1 NC	104571	Ex9CSR09 01 3P 240V	1/72
230 V AC	9 A	S12	3P	1 NC	104572	Ex9CSR09 01 3P 230V	1/72
220 V AC	9 A	S12	3P	1 NC	104573	Ex9CSR09 01 3P 220V	1/72
127 V AC	9 A	S12	3P	1 NC	104574	Ex9CSR09 01 3P 127V	1/72
110 V AC	9 A	S12	3P	1 NC	104575	Ex9CSR09 01 3P 110V	1/72
48 V AC	9 A	S12	3P	1 NC	104564	Ex9CSR09 01 3P 48V	1/72
42 V AC	9 A	S12	3P	1 NC	104565	Ex9CSR09 01 3P 42V	1/72
36 V AC	9 A	S12	3P	1 NC	104569	Ex9CSR09 01 3P 36V	1/72
24 V AC	9 A	S12	3P	1 NC	104570	Ex9CSR09 01 3P 24V	1/72

Wiring diagrams



Ex9CSR 3P 1NO



Ex9CSR 3P 1NC

Miniature reversible contactors Ex9CSR

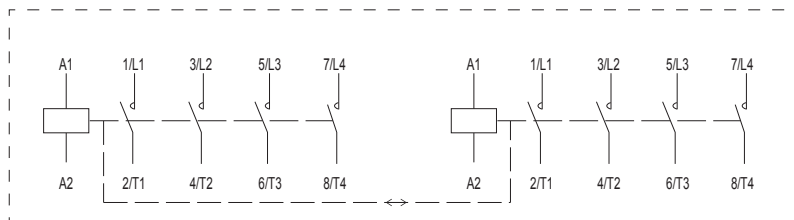
Rated current 9 A, 4-pole

- Miniature reversible version of contactor
- Mounting onto device (DIN) rail 35 mm or onto panel
- Front-mounted auxiliary contacts AX41.. can be used
- A number of built-in auxiliary contacts given belongs to single contactor unit in the pair

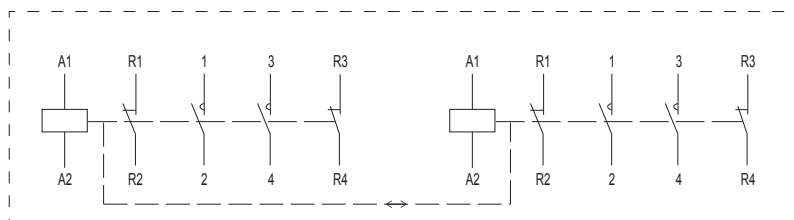


Control voltage	AC-3 I_e	Frame size	Poles	Auxiliary contacts	Article No.	Type	Packing
415 V AC	9 A	S12	4P	-	104590	Ex9CSR09 4P 415V	1/72
400 V AC	9 A	S12	4P	-	104591	Ex9CSR09 4P 400V	1/72
380 V AC	9 A	S12	4P	-	104592	Ex9CSR09 4P 380V	1/72
240 V AC	9 A	S12	4P	-	104595	Ex9CSR09 4P 240V	1/72
230 V AC	9 A	S12	4P	-	104596	Ex9CSR09 4P 230V	1/72
220 V AC	9 A	S12	4P	-	104597	Ex9CSR09 4P 220V	1/72
127 V AC	9 A	S12	4P	-	104598	Ex9CSR09 4P 127V	1/72
110 V AC	9 A	S12	4P	-	104599	Ex9CSR09 4P 110V	1/72
48 V AC	9 A	S12	4P	-	104588	Ex9CSR09 4P 48V	1/72
42 V AC	9 A	S12	4P	-	104589	Ex9CSR09 4P 42V	1/72
36 V AC	9 A	S12	4P	-	104593	Ex9CSR09 4P 36V	1/72
24 V AC	9 A	S12	4P	-	104594	Ex9CSR09 4P 24V	1/72
415 V AC	9 A	S12	2+2	-	104578	Ex9CSR09 4P/22 415V	1/72
400 V AC	9 A	S12	2+2	-	104579	Ex9CSR09 4P/22 400V	1/72
380 V AC	9 A	S12	2+2	-	104580	Ex9CSR09 4P/22 380V	1/72
240 V AC	9 A	S12	2+2	-	104583	Ex9CSR09 4P/22 240V	1/72
230 V AC	9 A	S12	2+2	-	104584	Ex9CSR09 4P/22 230V	1/72
220 V AC	9 A	S12	2+2	-	104585	Ex9CSR09 4P/22 220V	1/72
127 V AC	9 A	S12	2+2	-	104586	Ex9CSR09 4P/22 127V	1/72
110 V AC	9 A	S12	2+2	-	104587	Ex9CSR09 4P/22 110V	1/72
48 V AC	9 A	S12	2+2	-	104576	Ex9CSR09 4P/22 48V	1/72
42 V AC	9 A	S12	2+2	-	104577	Ex9CSR09 4P/22 42V	1/72
36 V AC	9 A	S12	2+2	-	104581	Ex9CSR09 4P/22 36V	1/72
24 V AC	9 A	S12	2+2	-	104582	Ex9CSR09 4P/22 24V	1/72

Wiring diagrams



Ex9CSR 4P



Ex9CSR 4P/22

Miniature reversible contactors Ex9CSR

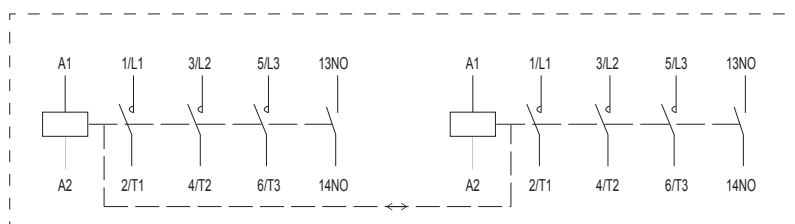
Rated current 12 A, 3-pole

- Miniature reversible version of contactor
- Mounting onto device (DIN) rail 35 mm or onto panel
- Front-mounted auxiliary contacts AX41.. can be used
- Can be combined with overload relays Ex9R12
- A number of built-in auxiliary contacts given belongs to single contactor unit in the pair

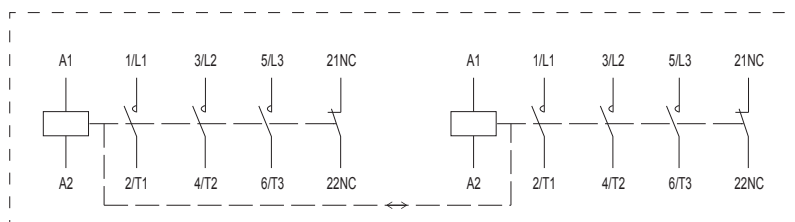


Control voltage	AC-3 I_e	Frame size	Poles	Auxiliary contacts	Article No.	Type	Packing
415 V AC	12 A	S12	3P	1 NO	104602	Ex9CSR12 10 3P 415V	1/72
400 V AC	12 A	S12	3P	1 NO	104603	Ex9CSR12 10 3P 400V	1/72
380 V AC	12 A	S12	3P	1 NO	104604	Ex9CSR12 10 3P 380V	1/72
240 V AC	12 A	S12	3P	1 NO	104607	Ex9CSR12 10 3P 240V	1/72
230 V AC	12 A	S12	3P	1 NO	104608	Ex9CSR12 10 3P 230V	1/72
220 V AC	12 A	S12	3P	1 NO	104609	Ex9CSR12 10 3P 220V	1/72
127 V AC	12 A	S12	3P	1 NO	104610	Ex9CSR12 10 3P 127V	1/72
110 V AC	12 A	S12	3P	1 NO	104611	Ex9CSR12 10 3P 110V	1/72
48 V AC	12 A	S12	3P	1 NO	104600	Ex9CSR12 10 3P 48V	1/72
42 V AC	12 A	S12	3P	1 NO	104601	Ex9CSR12 10 3P 42V	1/72
36 V AC	12 A	S12	3P	1 NO	104605	Ex9CSR12 10 3P 36V	1/72
24 V AC	12 A	S12	3P	1 NO	104606	Ex9CSR12 10 3P 24V	1/72
415 V AC	12 A	S12	3P	1 NC	104614	Ex9CSR12 01 3P 415V	1/72
400 V AC	12 A	S12	3P	1 NC	104615	Ex9CSR12 01 3P 400V	1/72
380 V AC	12 A	S12	3P	1 NC	104616	Ex9CSR12 01 3P 380V	1/72
240 V AC	12 A	S12	3P	1 NC	104619	Ex9CSR12 01 3P 240V	1/72
230 V AC	12 A	S12	3P	1 NC	104620	Ex9CSR12 01 3P 230V	1/72
220 V AC	12 A	S12	3P	1 NC	104621	Ex9CSR12 01 3P 220V	1/72
127 V AC	12 A	S12	3P	1 NC	104622	Ex9CSR12 01 3P 127V	1/72
110 V AC	12 A	S12	3P	1 NC	104623	Ex9CSR12 01 3P 110V	1/72
48 V AC	12 A	S12	3P	1 NC	104612	Ex9CSR12 01 3P 48V	1/72
42 V AC	12 A	S12	3P	1 NC	104613	Ex9CSR12 01 3P 42V	1/72
36 V AC	12 A	S12	3P	1 NC	104617	Ex9CSR12 01 3P 36V	1/72
24 V AC	12 A	S12	3P	1 NC	104618	Ex9CSR12 01 3P 24V	1/72

Wiring diagrams



Ex9CSR 3P 1NO



Ex9CSR 3P 1NC

Miniature reversible contactors Ex9CSR

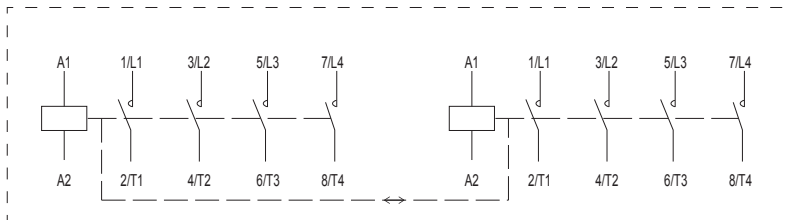
Rated current 12 A, 4-pole

- Miniature reversible version of contactor
- Mounting onto device (DIN) rail 35 mm or onto panel
- Front-mounted auxiliary contacts AX41.. can be used
- A number of built-in auxiliary contacts given belongs to single contactor unit in the pair

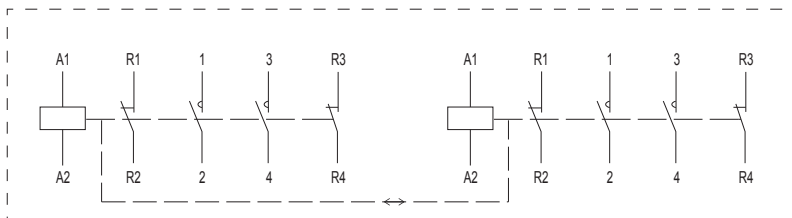


Control voltage	AC-3 I_e	Frame size	Poles	Auxiliary contacts	Article No.	Type	Packing
415 V AC	12 A	S12	4P	-	104638	Ex9CSR12 4P 415V	1/72
400 V AC	12 A	S12	4P	-	104639	Ex9CSR12 4P 400V	1/72
380 V AC	12 A	S12	4P	-	104640	Ex9CSR12 4P 380V	1/72
240 V AC	12 A	S12	4P	-	104643	Ex9CSR12 4P 240V	1/72
230 V AC	12 A	S12	4P	-	104644	Ex9CSR12 4P 230V	1/72
220 V AC	12 A	S12	4P	-	104645	Ex9CSR12 4P 220V	1/72
127 V AC	12 A	S12	4P	-	104646	Ex9CSR12 4P 127V	1/72
110 V AC	12 A	S12	4P	-	104647	Ex9CSR12 4P 110V	1/72
48 V AC	12 A	S12	4P	-	104636	Ex9CSR12 4P 48V	1/72
42 V AC	12 A	S12	4P	-	104637	Ex9CSR12 4P 42V	1/72
36 V AC	12 A	S12	4P	-	104641	Ex9CSR12 4P 36V	1/72
24 V AC	12 A	S12	4P	-	104642	Ex9CSR12 4P 24V	1/72
415 V AC	12 A	S12	2+2	-	104626	Ex9CSR12 4P/22 415V	1/72
400 V AC	12 A	S12	2+2	-	104627	Ex9CSR12 4P/22 400V	1/72
380 V AC	12 A	S12	2+2	-	104628	Ex9CSR12 4P/22 380V	1/72
240 V AC	12 A	S12	2+2	-	104631	Ex9CSR12 4P/22 240V	1/72
230 V AC	12 A	S12	2+2	-	104632	Ex9CSR12 4P/22 230V	1/72
220 V AC	12 A	S12	2+2	-	104633	Ex9CSR12 4P/22 220V	1/72
127 V AC	12 A	S12	2+2	-	104634	Ex9CSR12 4P/22 127V	1/72
110 V AC	12 A	S12	2+2	-	104635	Ex9CSR12 4P/22 110V	1/72
48 V AC	12 A	S12	2+2	-	104624	Ex9CSR12 4P/22 48V	1/72
42 V AC	12 A	S12	2+2	-	104625	Ex9CSR12 4P/22 42V	1/72
36 V AC	12 A	S12	2+2	-	104629	Ex9CSR12 4P/22 36V	1/72
24 V AC	12 A	S12	2+2	-	104630	Ex9CSR12 4P/22 24V	1/72

Wiring diagrams



Ex9CSR 4P



Ex9CSR 4P/22

Technical Data Ex9CSR

Miniature reversible contactors Ex9CSR06, Ex9CSR09, Ex9CSR12

General parameters

Very compact dimensions		
Contactors rated at AC-3		
Suitable for industrial as well as domestic applications		
3 and 4-pole versions		
Built-in mechanical interlock between particular contactors		
Mounting onto device rail (DIN) 35 mm or onto panel		
With or without built-in auxiliary contacts		
Accessories		
Front-mounted auxiliary contacts	AX41	101435, 101280, 101281, 101282, 101283
Surge suppressor block	CCU41	104501-104503

Electrical parameters - main contacts and general

	Ex9CSR06	Ex9CSR09	Ex9CSR12
Tested according to	IEC/EN 60947-4-1		
Rated op. voltage U_e	690 V AC		
Rated insulating voltage U_i	690 V AC		
Rated impulse withstand voltage U_{imp}	6 kV	6 kV	6 kV
Rated frequency	50/60 Hz		
Interlocked opposing contacts according to EN 60947-4-1, Annex L	yes	yes	yes
Conventional free air thermal current I_{th}	20 A	20 A	20 A
Rated operational current I_e			
AC-1	20 A	20 A	20 A
AC-2/AC-3/AC-4, 380/400 V	6 A	9 A	12 A
AC-2/AC-3/AC-4, 660/690 V	3.8 A	4.9 A	4.9 A
Rated power of 3-phase motor			
AC-3/AC-4, 380/400 V	2.2 kW	4 kW	5.5 kW
AC-3/AC-4, 660/690 V	3 kW	4 kW	4 kW
Maximum short circuit protection fuse			
Coordination type 1 at 500 V AC	25 A gG/gL	25 A gG/gL	25 A gG/gL
Coordination type 2 at 500 V AC	20 A gG/gL	20 A gG/gL	20 A gG/gL
Safe isolation (EN 61140)			
Main contact — main contact	400 V AC	400 V AC	400 V AC
Main contact — coil	400 V AC	400 V AC	400 V AC
3-phase power AC-1			
Maximum back-up fuse gG/gL	36 A	36 A	36 A
Power at 230/240 V	8 kW	8 kW	8 kW
Power at 380/400 V	13 kW	13 kW	13 kW
Power at 660/690 V	23 kW	23 kW	23 kW
Rated current $I_e = I_{th}$	20 A	20 A	20 A
1-phase power AC-1, 3 contacts in parallel			
Maximum back-up fuse gG/gL	63 A	63 A	63 A
Power at 230/240 V	18 kW	18 kW	18 kW
Power at 380/400 V	30 kW	30 kW	30 kW
Power at 660/690 V	51 kW	51 kW	51 kW
Rated current $I_e = I_{th}$	45 A	45 A	45 A

Technical Data Ex9CSR

Miniature reversible contactors Ex9CSR06, Ex9CSR09, Ex9CSR12

Electrical parameters - main contacts and general

	Ex9CSR06	Ex9CSR09	Ex9CSR12
Making capacity			
230/240 V	144 A	144 A	144 A
380/400 V	144 A	144 A	144 A
660/690 V	144 A	144 A	144 A
Breaking capacity			
230/240 V	60 A	90 A	120 A
380/400 V	60 A	90 A	120 A
660/690 V	38 A	49 A	49 A
Mechanical service life	10 000 000 operation cycles		
Electrical service life 380/400 V			
AC-3	1 200 000 operation cycles		
AC-4	50 000 operation cycles	40 000 operation cycles	40 000 operation cycles
Overvoltage category	III		
EMC environment	A		
Comparative Tracking Index	400 V		
Prospective short circuit current I_g	50 kA		

Electrical parameters - coil

	Ex9CSR06	Ex9CSR09	Ex9CSR12
Control Voltage U_c	24, 36, 42, 48, 110, 127, 220, 230, 240, 380, 400, 415 V AC		
Tolerance of Control Voltage U_c	0.8 — 1.1 U_c	0.8 — 1.1 U_c	0.8 — 1.1 U_c
Frequency	50 Hz	50 Hz	50 Hz
Power consumption			
Pick-up	70 VA / 30 W	70 VA / 30 W	70 VA / 30 W
Hold	7.5 VA / 3 W	7.5 VA / 3 W	7.5 VA / 3 W
Duty	100 %	100 %	100 %
Closing delay	10 — 20 ms	10 — 20 ms	10 — 20 ms
Opening delay	4 — 16 ms	4 — 16 ms	4 — 16 ms
Closing delay with front-mounted AX	5 — 15 ms	5 — 15 ms	5 — 15 ms

Electrical parameters - built-in auxiliary contacts

Rated op. voltage U_e	690 V AC
Rated insulating voltage U_i	690 V AC
Rated impulse withstand voltage U_{imp}	6 kV
Rated frequency	50 Hz
Interlocked opposing contacts according to EN 60947-4-1, Annex L	yes
Conventional free air thermal current I_{th}	10 A
Rated operational current I_e	
AC-15	6 A / 120 V, 3 A / 240 V, 1.9 A / 380 V, 1.5 A / 480 V, 1.2 A / 600 V
DC-13	0.55 A / 125 V, 0.27 A / 250 V
Max. back-up fuse	10 A gG/gL
Conditional short circuit current I_k with max. back-up fuse	1 kA

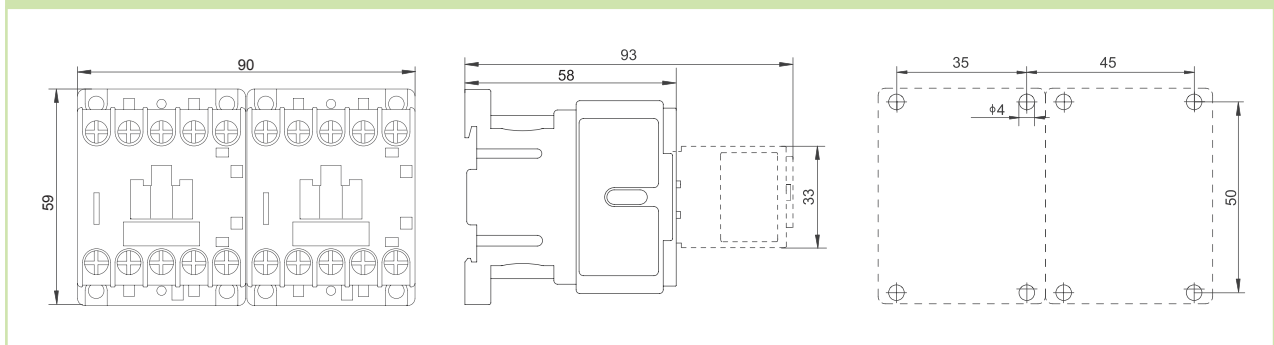
Technical Data Ex9CSR

Miniature reversible contactors Ex9CSR06, Ex9CSR09, Ex9CSR12

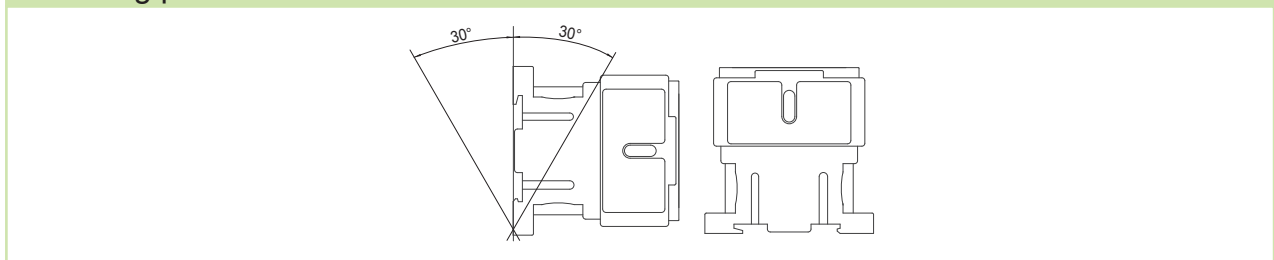
Mechanical parameters

	Ex9CSR06	Ex9CSR09	Ex9CSR12
Device width	90 mm		
Device height	59 mm (including rail clip)		
Device depth	58 mm (without front-mounted auxiliary contact)		
Mounting	easy fastening onto 35 mm device rail (DIN) or onto panel		
Degree of protection	IP20		
Terminals	lift		
Terminal capacity	1 — 2.5 mm ²		
Fastening torque of terminals	0.7 — 0.8 Nm		
Ambient temperature	-20 — +60 °C		
Altitude	≤ 2000 m		
Relative humidity	≤ 95 %		
Resistance to humidity and heat	class 2		
Pollution degree	3		
Installation class	III		
Weight	0.37 kg	0.37 kg	0.37 kg
Power loss at I_e (per contactor)	0.2 W	0.2 W	0.2 W

Dimensions



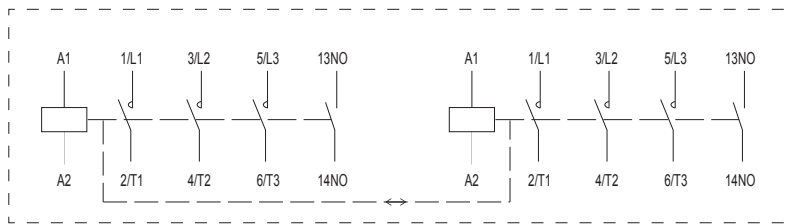
Mounting positions



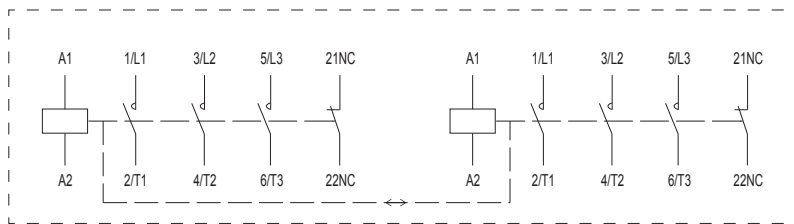
Technical Data Ex9CSR

Miniature reversible contactors Ex9CSR06, Ex9CSR09, Ex9CSR12

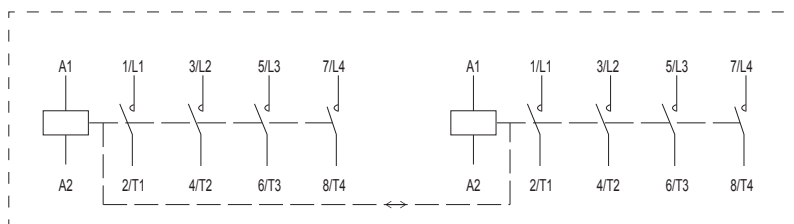
Wiring diagrams



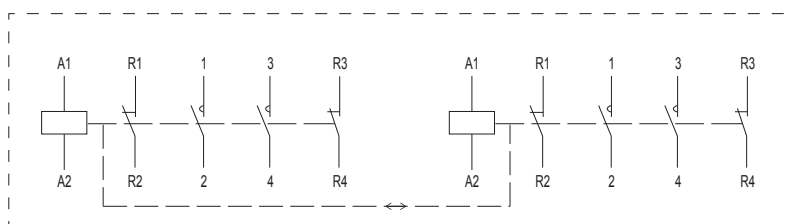
Ex9CSR 3P 1NO



Ex9CSR 3P 1NC



Ex9CSR 4P



Ex9CSR 4P/22