

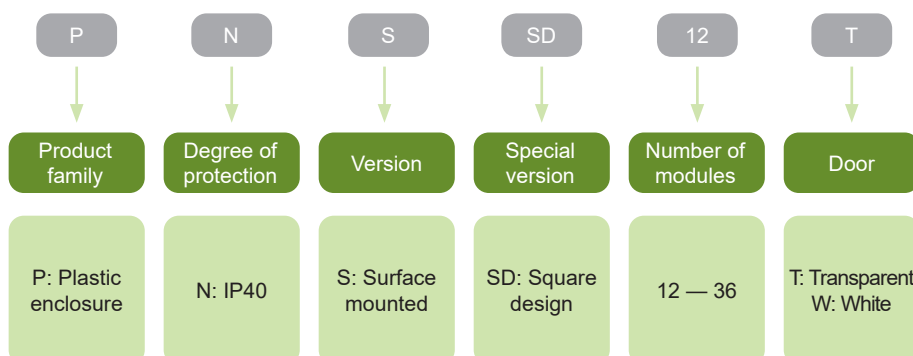
Surface-mounted IP40 Consumer Units PNS-SD



- Surface-mounted consumer units PNS-SD
- Degree of protection IP40
- 12(+2) up to 36(+6) modules
- 1 up to 3 rows
- Transparent or white door
- White color RAL 9003

Consumer units PNS-SD are intended mainly for domestic applications. Their design is suitable for surface mounting. Scope of delivery consists of enclosure, door, device DIN rails, N + PE terminals, front cover with device cutout, cover for empty place and mounting material.

Type Key



Certification marks



Surface-mounted IP40 Consumer Units PNS-SD

Consumer units PNS with transparent door

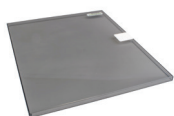
- Surface mounted version
- 12(+2) modules per row
- 1 up to 3 rows
- Scope of delivery: enclosure, door, device DIN rails, N + PE terminals, front cover with device cutout, cover for empty place, mounting material



N+PE terminals	Number of rows	Total modules	Article No.	Type	Packing
10+10	1	12(+2)	107274	PNS-SD 12T	1
13+13	2	24(+4)	107275	PNS-SD 24T	1
15+15	3	36(+6)	107276	PNS-SD 36T	1

Spare door, transparent

- Spare door for consumer unit
- Packed separately



Version	For consumer units	Article No.	Type	Packing
Transparent	PNS-SD 12T	107277	DR PNS-SD 12T	1
Transparent	PNS-SD 24T	107278	DR PNS-SD 24T	1
Transparent	PNS-SD 36T	107378	DR PNS-SD 36T	1

Consumer units PNS with white door

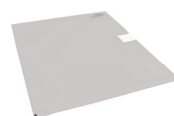
- Surface mounted version
- 12(+2) modules per row
- 1 up to 3 rows
- Scope of delivery: enclosure, door, device DIN rails, N + PE terminals, front cover with device cutout, cover for empty place, mounting material



N+PE terminals	Number of rows	Total modules	Article No.	Type	Packing
10+10	1	12(+2)	113280	PNS-SD 12W	1
13+13	2	24(+4)	113283	PNS-SD 24W	1
15+15	3	36(+6)	113284	PNS-SD 36W	1

Spare door, white

- Spare door for consumer unit
- Packed separately



Version	For consumer units	Article No.	Type	Packing
White	PNS-SD 12W	113285	DR PNS-SD 12W	1
White	PNS-SD 24W	113286	DR PNS-SD 24W	1
White	PNS-SD 36W	113287	DR PNS-SD 36W	1

Surface-mounted IP40 Consumer Units PNS-SD

Lock with key

- Lock with key
- For subsequent mounting onto enclosure door



Version of lock	For consumer units	Article No.	Type	Packing
Metal	PMF, PNS-SD	105494	LK PM M	1

Spare plastic lock

- For PMF and PNS-SD line of consumer units
- Spare part, lock is in the standard scope of delivery



Description	Article No.	Type	Packing
Spare lock, PMF, PNS-SD	107121	SL PMF	1

Additional insulated terminals

- Additional insulated terminal with holder
- Grey colour
- 2 x 10 or 2 x 15 terminals



Description	Number of N + PE terminals	Article No.	Type	Packing
Insulated terminal	10 + 10	109053	TH CUB D	1
Insulated terminal	15 + 15	101577	TH CUB P	1

Holder for double terminal

- Adding possibility to connect two insulate terminals together
- 1 set = 2 pieces (one per side)



Description	Article No.	Type	Packing
Holder for double terminal	110820	DTH	1 set

Covers for empty places

- Cover for unused 45 mm device cutout
- White, grey or black colour
- Total width 224 mm, can be shortened
- Segmented as 1x 15 mm, 22 x 1/2 module width, 1x 15 mm



Colour	Width	Article No.	Type	Packing
White	224 mm	101574	B CC45	1/500
Grey	224 mm	113277	B CC45 G	1/500
Black	224 mm	110192	B CC45 B	1/500

Technical Data PNS-SD

Plastic consumer units, IP40, surface mounted

General parameters

Consumer units for domestic applications mainly

Surface mounted version

Scope of delivery: enclosure, door, device DIN rails, N + PE terminals, front cover with device cutout, cover for empty place, mounting material

Electrical parameters

Tested according to	EN 60670, EN 62208
Rated operational voltage	400 V AC
Rated frequency	50 Hz
Degree of protection	IP40
Protection class	II
Rated current I _c	Up to 63A
Operating temperature	-25°C – +60°C
Maximum power dissipation of all installed devices at ambient temperature 30 °C	
PNS-SD 12T / PNS-SD 12W	30 W
PNS-SD 24T / PNS-SD 24W	40 W
PNS-SD 36T / PNS-SD 36W	60 W

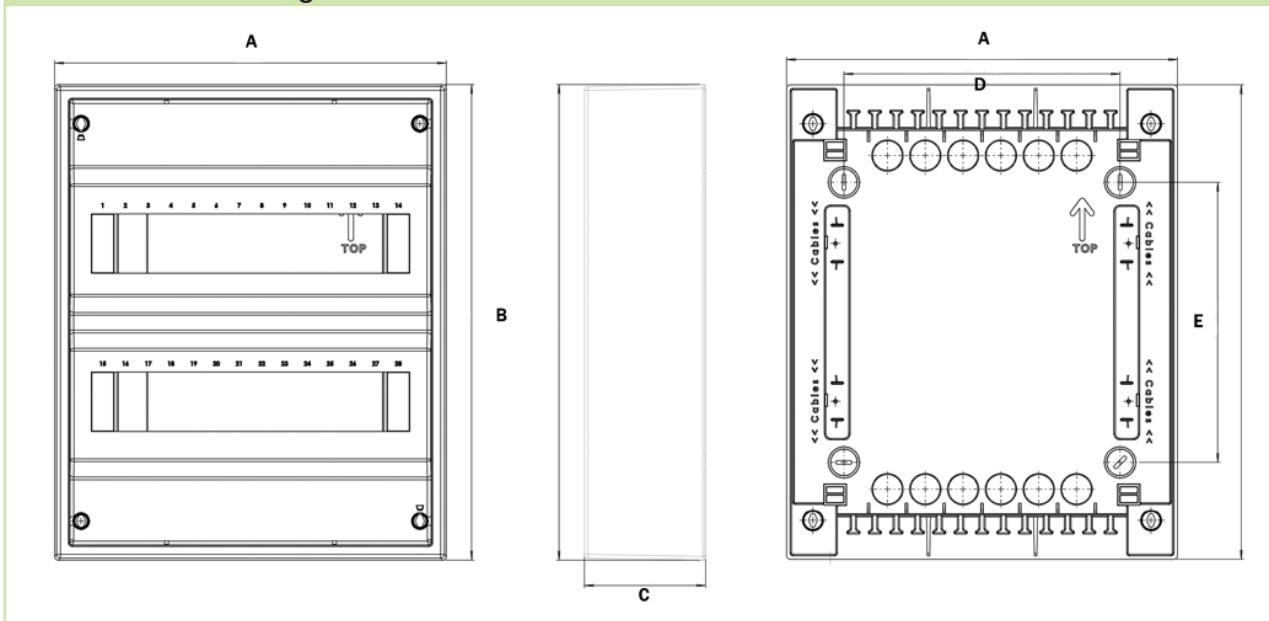
Mechanical parameters

Glow-wire test	650 °C
Mechanical impact resistance	IK07
Used plastics	ABS-Halogen-free

Technical Data PNS-SD

Plastic consumer units, IP40, surface mounted

Dimensional drawings



Dimensions

Type	Dimensions [mm]					Weight [kg]
	A	B	C	D	E	
PNS-SD 12T / PNS-SD 12W	310	251	96	125	126	1.2
PNS-SD 24T / PNS-SD 24W	310	377	96	223	126	1.6
PNS-SD 36T / PNS-SD 36W	310	505	96	125	126	2.0