

CSBBRS2EG

Branch Line Restraint, Structural Attachment Fitting for Concrete or Wood

Global Part Number	Local Part Number	Threaded Rod Brace Member	UL® Load Rating	FM® Load Rating			
				30° - 44°	45° - 59°	60° - 74°	75° - 90°
*CSBBRS2EG	---	3/8"-16 UNC	425 lbs (1891N)	210 lbs (935N)	290 lbs (1290N)	200 lbs (890N)	210 lbs (935N)
		1/2"-13 UNC					
*CSBBRS2MEG	402240	M10 x 1.5	425 lbs (1891N)	210 lbs (935N)	290 lbs (1290N)	200 lbs (890N)	210 lbs (935N)
		M12 x 1.75					

* Uses DeWalt Engineered by Powers TAPPER+ Screw Anchor Part Number 2722SD

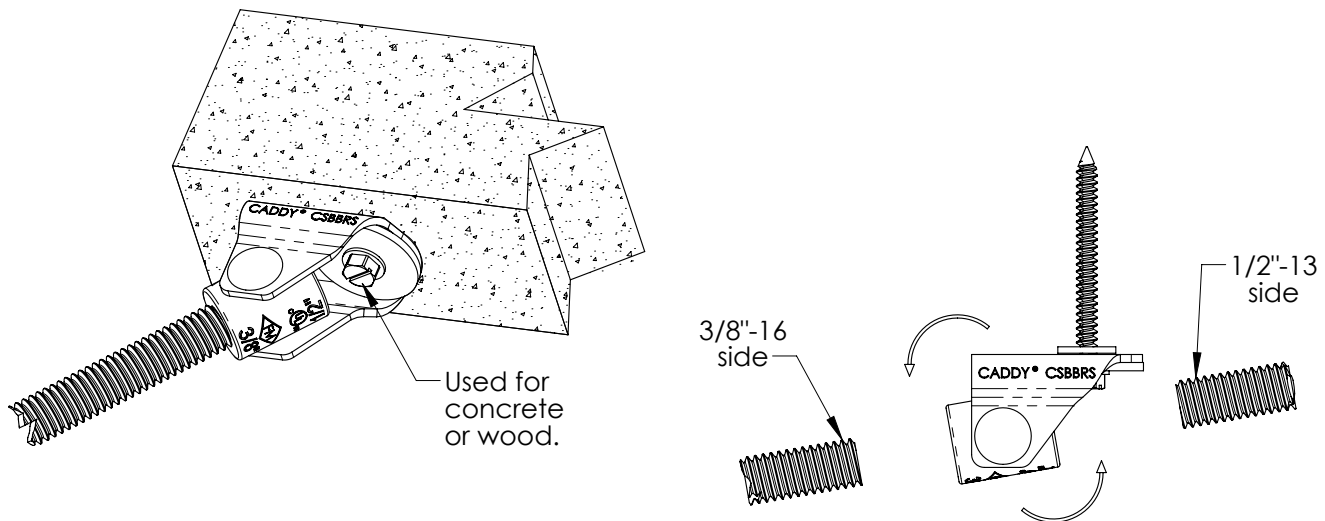
Refer to DeWalt Engineered by Powers TAPPER+ Screw Anchor ICC-ES Evaluation Report ESR-3068, ESR-3196, ESR-3042 and ESR-3213 for the allowable load ratings in various substrate material and embedment depths

Rod Size	Root Diameter	Least Radius of Gyration (r)	Maximum Unbraced Length (L)			
			L/r = 100	L/r = 200	L/r = 300	L/r = 400
3/8"	0.300"	0.075"	7"	14"	22"	30"
M10	7.94mm	1.99mm	198mm	397mm	595mm	794mm
1/2"	0.404"	0.101"	10"	20"	30"	40"
M12	9.60mm	2.40mm	240mm	480mm	720mm	960mm

Note:

Branch Line Restraints are intended to be installed in accordance with NFPA®-13 and manufacturer's installation instructions.

1. Orient part in direction needed for Installation.
2. For Wood Installation, proceed to Step 3. For Concrete Installation, pre-drill concrete using a 3/16" taper bit drill at least 2-1/4" deep. Clear the hole of dust and other material.
3. Use standard screw gun with a depth sensitive nose piece or clutch for correct seating of fastener. Use a size 5/16" [8mm] hex head socket or flat head screwdriver. Drive the anchor in a continuous motion until fastener is fully seated.
4. Rotate barrel of Branch Line Restraint to 3/8"-16 side or 1/2"-13 side based on threaded rod needed for application.



WARNING:

1. nVent products shall be installed and used only as indicated in nVent product instruction sheets and training materials. Instruction sheets are available at www.nVent.com and from your nVent customer service representative.
2. nVent products must never be used for a purpose other than the purpose for which they were designed or in a manner that exceeds specified load ratings.
3. All instructions must be completely followed to ensure proper and safe installation and performance.
4. Improper installation, misuse, misapplication or other failure to completely follow nVent's instructions and warnings may cause product malfunction, property damage, serious bodily injury and/or death, and void your warranty.
5. Products that are manufactured using spring steel components shall be used only in a non-corrosive indoor environment.
6. All pipe supports, hangers, intermediate components and structural attachments must ONLY be used as described herein and are NEVER to be used for any other purpose.

NOTE: All load ratings are for static conditions and do not account for dynamic loading such as wind, water or seismic loads, unless otherwise noted.

The customer is responsible for:

- a. Conformance to all governing codes.
- b. The integrity of structures to which the products are attached, including their capability of safely accepting the loads imposed, as evaluated by a qualified engineer.
- c. Using appropriate industry standard hardware as noted above.

SAFETY INSTRUCTIONS:

All governing codes and regulations and those required by the job site must be observed. Always use appropriate safety equipment such as eye protection, hard hat, and gloves as appropriate to the application.

FM is a registered certification mark of FM Approvals LLC, LTD
 NFPA is a registered trademark of National Fire Protection Association, Inc.
 UL is a registered trademark of UL LLC
 nVent, nVent CADDY, nVent ERICO Cadweld, nVent ERICO Critec, nVent ERICO, nVent ERIFLEX, and nVent LENTON are owned by nVent or its global affiliates. All other trademarks are the property of their respective owners. nVent reserves the right to change specifications without prior notice.

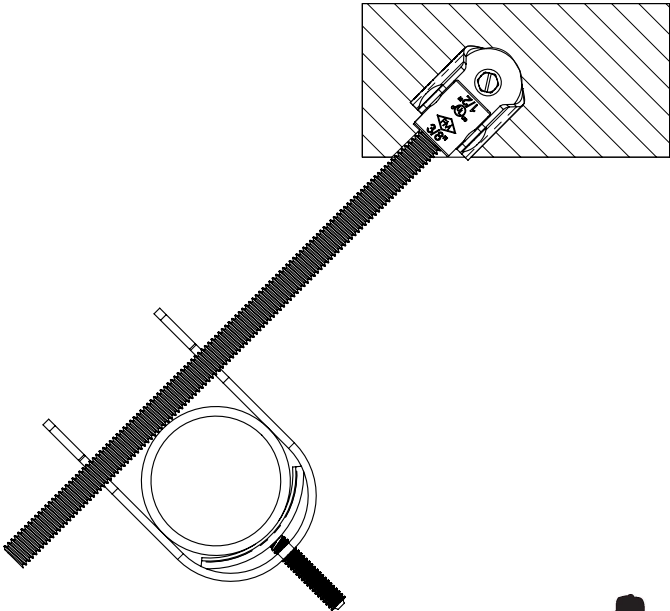
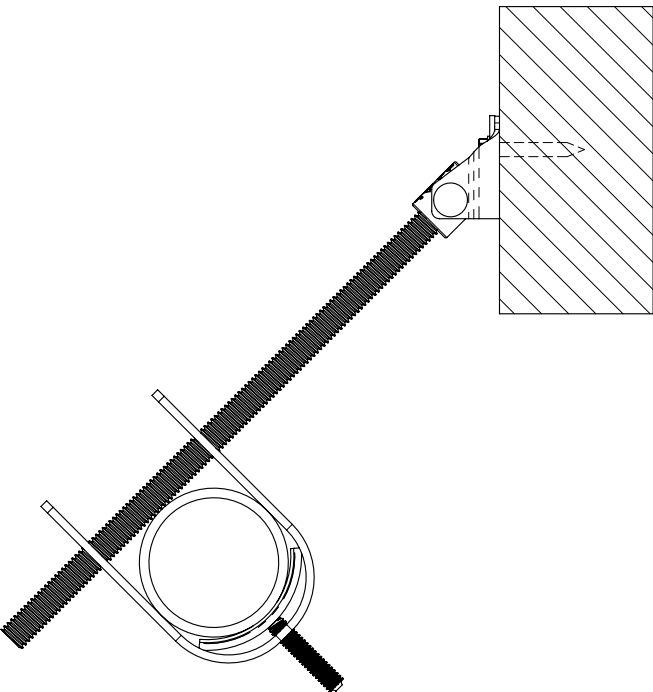
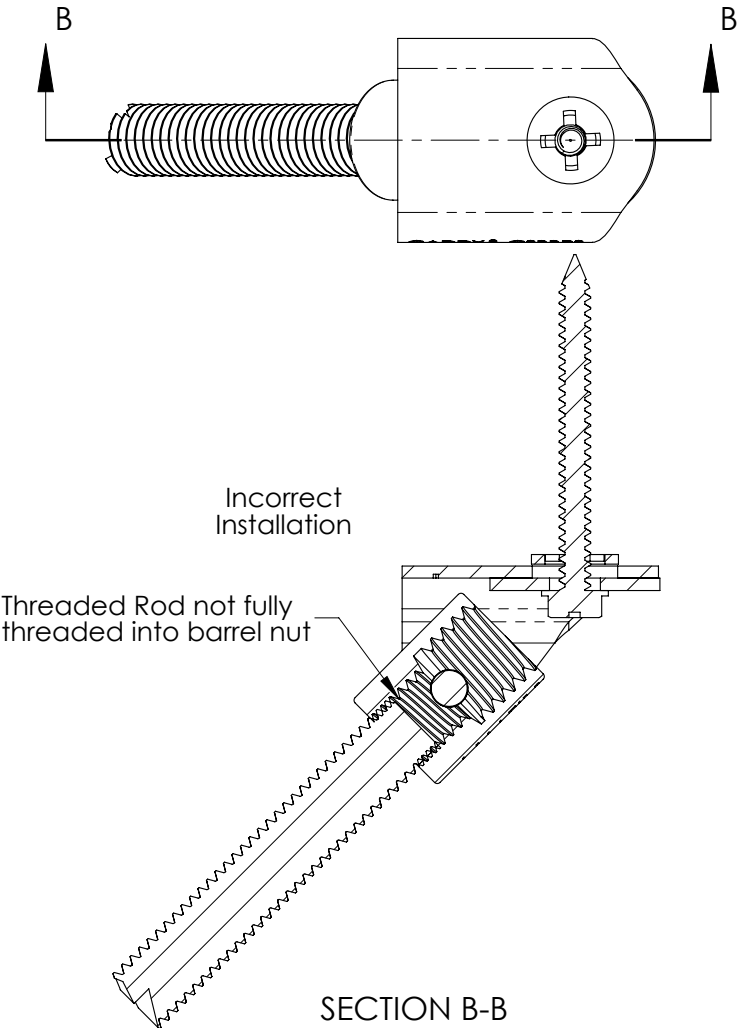
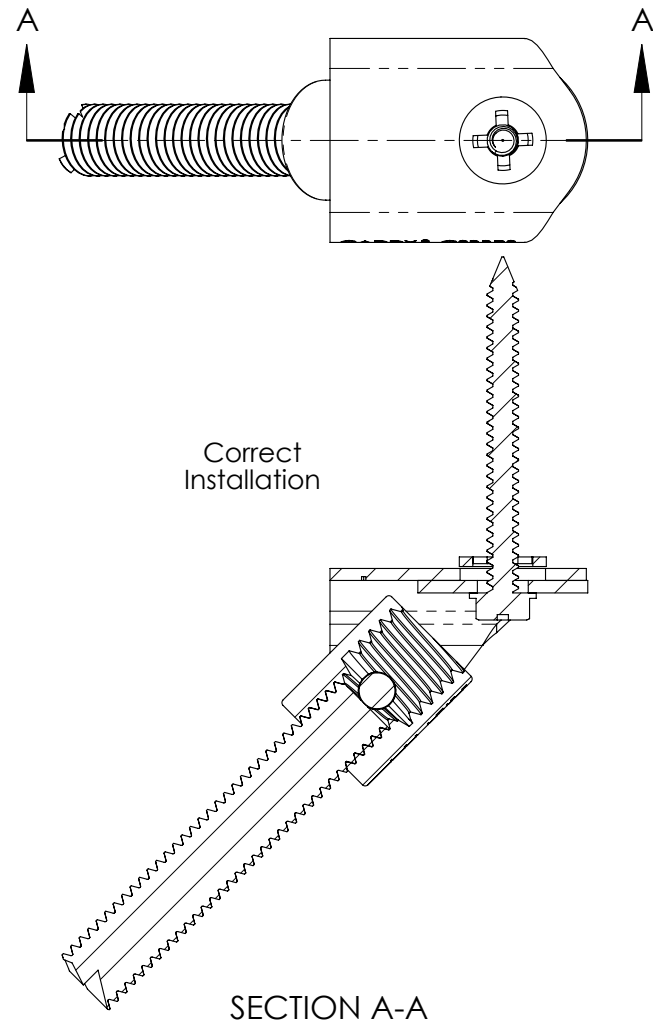
TECHNICAL SUPPORT:
www.nVent.com

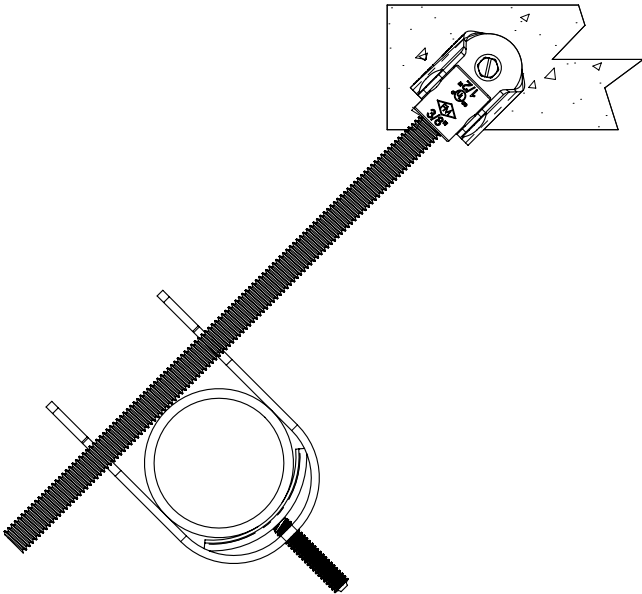
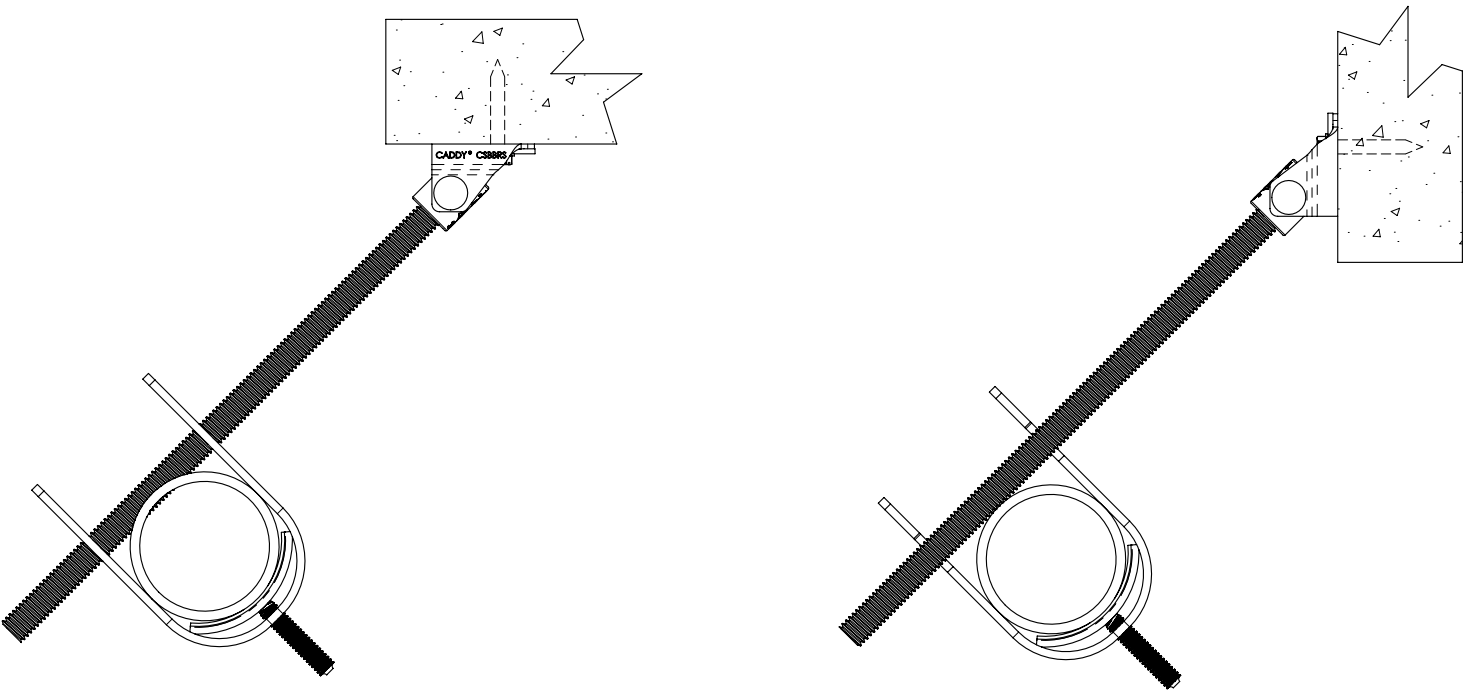
CS448 F

1 OF 3

© 2011 - 2019 nVent All Rights Reserved

5. Fully thread the Threaded Rod into the Branch Line Restraint barrel nut





nVent, nVent CADDY, nVent ERICO Cadweld, nVent ERICO Critec, nVent ERICO, nVent ERIFLEX, and nVent LENTON are owned by nVent or its global affiliates. All other trademarks are the property of their respective owners. nVent reserves the right to change specifications without prior notice.

TECHNICAL SUPPORT:
www.nVent.com

CF5448_F

3 OF 3

© 2011 - 2019 nVent. All Rights Reserved

