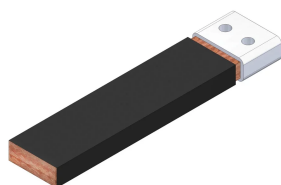


# CONDUCTEUR FLEXBUS RÉP., 640 MM<sup>2</sup>, 22 000 MM X 25 MM X 25 MM X 12,5 MM X 65,5 KG

## CATALOG NUMBER

### **FLEXCORE640L22**



The nVent ERIFLEX Flexbus Conductor with Rodent and Termite Repellent is designed for easy, one-sided use with a direct connection to a busbar or circuit-breaker palm. This innovative and patented solution provides a reliable connection between two pieces of electrical equipment, such as a transformer, switchboard, or generator. The Flexbus Advanced solution ensures high reliability and offers a customizable on-site connection without the need for additional design studies, specialized workforce, or expensive tools. The Flexbus Conductor is insulated with a low-smoke, halogen-free, flame-retardant (LSHFFR), high-temperature, and class II material. It is a flexible, copper-plated, aluminum flat braid available in lengths from 2 to 25 meters and in various cross sections for 500A to 6300A applications. This conductor allows for connection from the power supply to switchgear with only one conductor per phase up to 1600kVA and with two conductors per phase up to 3150kVA.

## CERTIFICATIONS



## FONCTIONS

Flexible, insulated, copper-plated aluminum flat braid

Better current/ampacity compared to cable due to the skin effect

Significantly more flexible than cable

No need to adhere to a bending radius

Ready-to-use from one side with a direct connection to a busbar or circuit breaker palm

Requires only one conductor per phase for 400kVA (560 A) to 1600kVA (2250 A) and two conductors per phase for 2000kVA (2800 A) to 3150kVA (4435 A)

Insulation sleeve contains a special additive that makes the Flexbus conductor resistant to rodents and termites

## CARACTÉRISTIQUES DU PRODUIT

---

Article Number: 508492

Cross Section: 640 mm<sup>2</sup>

Length 1 (L1): 22000 mm

Length 2 (L2): 75 mm

Conductor Material: Aluminium plaqué de cuivre

Insulation Material: Élastomère thermoplastique

Rodent & Termite Proof: Tested as per GB/T 34016-2017 & DIN EN 117

Connector Finish: Étamé

Connector Material: Cuivre

Insulation Elongation: 500 % min

Insulation Thickness: 2,5 - 3,5 mm

Halogen Free Rating: UL® 2885;IEC® 60754-1;IEC® 62821-2

Mechanical Resistance Rating: IK09

UV Resistance Rating: UL® 2556;UL® 854

Low Smoke Rating: IEC® 61034-2;ISO 5659-2;UL® 2885

Dielectric Strength: 20kV/mm

Flammability Rating: UL® 94V-0

Wire Diameter: 0,2mm

Nominal Voltage, IEC: 1000V;5000V

Max Working Voltage, EN 50264-3-1: 6000V

Working Temperature: -50 à 115 °C

Complies With: IEC® 60695-2-11 (Glow Wire Test 960 °C);IEC® 61439.1;IEC® 61439,1 Class II;IEC® 60364

ΔT 60 K: 1233A

Width 1 (W1): 58 mm

Width 2 (W2): 50 mm

Height 1 (H1): 31,2mm

Height 2 (H2): 21,3mm

Hole Size (HS): 11 mm

Unit Weight: 64,7 kg

A : 25 mm

B : 25 mm

C : 25 mm

D : 12,5 mm

2 Bar Current Coefficient, Non-Symmetric: 1,51

2 Bar Current Coefficient, Symmetric: 2

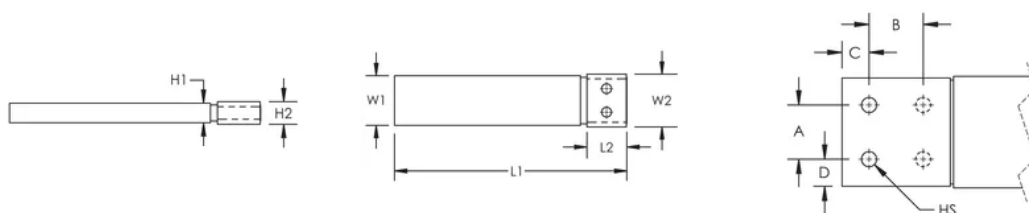
Installation Standard: AS 3008;BS 7671;CEI 64-8;CSN;DIN VDE 0100;HD 384;IEC® 60364

## ADDITIONAL PRODUCT DETAILS

Plages d'extension optionnelles pour plus de possibilités de connexion.

Facteurs de correction de l'intensité en fonction de l'élévation de température								
Elévation de température	$\Delta T$ 30°C	$\Delta T$ 40°C	$\Delta T$ 45°C	$\Delta T$ 50°C	$\Delta T$ 55°C	$\Delta T$ 60°C	$\Delta T$ 65°C	$\Delta T$ 70°C
Facteurs de correction de l'intensité	0.71	0.82	0.87	0.91	0.96	1.00	1.04	1.08

## DIAGRAMS



## AVERTISSEMENT

Les produits nVent doivent être installés et utilisés conformément aux consignes figurant dans les fiches d'instructions et les documents de formation des produits nVent. Les fiches d'instructions sont disponibles à l'adresse suivante : [www.nvent.com](http://www.nvent.com) et auprès de votre représentant du service client nVent. Une mauvaise installation, une utilisation incorrecte, une application erronée ou toute autre forme de non-respect scrupuleux des instructions et avertissements de nVent peuvent entraîner un dysfonctionnement du produit, des dommages matériels, des lésions corporelles graves et le décès et/ou annuler votre garantie.

### Amérique du Nord

+1.800.753.9221  
Option 1 – Customer Care  
Option 2 – Technical Support

### Europe

Netherlands:  
+31 800-0200135  
France:  
+33 800 901 793

### Europe

Germany:  
800 1890272  
Other Countries:  
+31 13 5835404

### APAC

Shanghai:  
+ 86 21 2412 1618/19  
Sydney:  
+61 2 9751 8500



Our powerful portfolio of brands:  
nVent.com **CADDY ERICO HOFFMAN RAYCHEM SCHROFF**  
**TRACER**