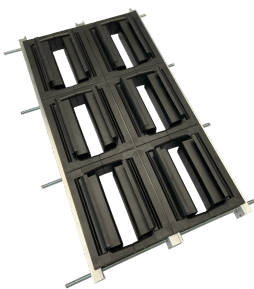


Ens. support Flexbus à plat, 2 conducteurs/phase 220, 360, 545, 640 mm², 3P+N

RÉFÉRENCE CATALOGUE

FLEXSUFLA50TN2



The nVent ERIFLEX Flexbus Pre-assembled Supports is a versatile, and user-friendly solution designed to complement your Flexbus installations. This innovative system is composed of a pre-assembled support and an aluminum profile, allowing it to accommodate multiple conductor configurations. Whether you need flat or on-edge positions, side-by-side or on top, this support system can be mounted directly to cable trays or on walls and ceilings.

The Flexbus Pre-assembled Supports are pre-mounted, guaranteeing substantial time savings during installation. By opting for these ready-to-go supports, you can reduce the total installation time for a Flexbus connection by approximately 20%.

This version of the Flexbus Supports features a single part number, with rails pre-cut to size and all components (inserts, threaded rods, bolts, and plastic modules) already mounted on the aluminum rail. No assembly is required. Simply mount the support on a cable tray or directly to the wall or ceiling. For standard Flexbus conductor routing, using these pre-assembled brackets significantly reduces installation time, making your setup process smoother and more efficient.

Engineered for reliability and safety, the nVent ERIFLEX Flexbus Pre-assembled Supports have been short-circuit tested and provides strong mechanical resistance to electromagnetic forces. It supports various neutral systems such as 3P or 3P+N and allows for easy routing in case of phase inversion or neutral rotation.

CERTIFICATIONS



CARACTÉRISTIQUES

Save even more installation time with Flexbus Pre-assembled Supports

Adjustable clip adapts to different conductor thicknesses with open and closed positions

Strong mechanical resistance and short-circuit tested as per IEC 61914 standards, withstanding up to 67kA rms and 147kA Peak

Suitable for 3P, 3P+N, and conductors in flat or on-edge configurations

Can be mounted on ceilings or walls

Designed to fit different types of cable trays

Can be mounted horizontally or vertically

CARACTÉRISTIQUES DU PRODUIT

Article Number: 508611

Insulation Voltage: 1000;1500

Dielectric Strength, IEC 61439,1: 3500 VAC à 1 min

Finish: Électrozingué

Material: Glass Fibre Reinforced Polyamide;Steel

Complies With: IEC® 60695-2-11 (Glow Wire Test 960 °C);IEC® 61439.1;IEC® 61914

Halogen Free Rating: IEC® 60754-1

Low Smoke Rating: ISO 5659-2

Flammability Rating: UL® 94V-0

Working Temperature: -40 à 130 °C

Installation Standard: AS 3008;BS 7671;CEI 64-8;CSN;DIN VDE 0100;HD 384;IEC® 60364

Depth (D): 78mm

Width (W): 425mm

Height (H): 240mm

Conductor Size: 220 mm²;360 mm²;545 mm²;640 mm²

Number of Phases: 3

Conductor Quantity: 2

Orientation: À plat

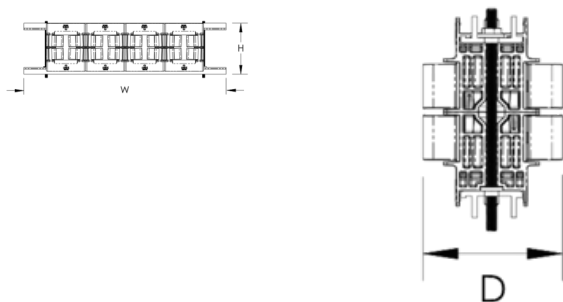
Unit Weight: 3,01 kg

ADDITIONAL PRODUCT DETAILS

When using a cable tray, we recommend installing a Flexbus Support at each end to protect the Flexbus Conductor from potential sharp edges.

For easier installation of the Flexbus Conductors on cable trays, we suggest using cantilever systems to provide easy and direct access during the installation phases.

DIAGRAMMES



AVERTISSEMENT

Les produits nVent doivent être installés et utilisés conformément aux consignes figurant dans les fiches d'instructions et les documents de formation des produits nVent. Les fiches d'instructions sont disponibles à l'adresse suivante : www.nvent.com et auprès de votre représentant du service client nVent. Une mauvaise installation, une utilisation incorrecte, une application erronée ou toute autre forme de non-respect scrupuleux des instructions et avertissements de nVent peuvent entraîner un dysfonctionnement du produit, des dommages matériels, des lésions corporelles graves et le décès et/ou annuler votre garantie.

Amérique du Nord

+1.800.753.9221

Option 1 – Customer Care

Option 2 – Technical

Support

Europe

Netherlands:

+31 800-0200135

France:

+33 800 901 793

Europe

Germany:

800 1890272

Other Countries:

+31 13 5835404

APAC

Shanghai:

+ 86 21 2412 1618/19

Sydney:

+61 2 9751 8500



Our powerful portfolio of brands:

CADDY

ERICO

HOFFMAN

ILSCO

SCHROFF

TRACHTE