



61

kWh/1000h

87

lumens/watt

## Biax™ L LongLast™ 4-pin, External Starter Req.

F55W BX/T5/830/4P TU

93105975

### Product information

Biax™ L covers a range of single ended compact fluorescent lamps with high lumen output and are available in a wide range: 18, 24, 34, 36, 40, 55 and 80 watt versions. The single ended design is less than half the length of standard fluorescent lamps. This makes Biax™ L the ideal choice for modular luminaires. The range is available in colours of 2700, 3000, 3500, and 4000K allowing use in most environments. All Biax™ L lamps have a CRI of 82. The family of Biax™ L lamps offers a rated life\* of 10,000 hours for 18W to 36W and 20,000 hours for 40, 55 and 80W. The 40, 55 and 80W versions are for use on high-frequency electronic gear only.

- at 3 hours per start

Long single biaxial tubes

### Application areas



Office



Industrial



## Product data

Product Code	93105975
Bulb Shape	Biax Plug-in
Bulb maximum overall diameter [mm]	43.8
Maximum Overall Length [mm]	538.8
Net weight per piece [g]	191
Gross weight per piece [g]	230
Operating position	U - Universal
Mercury Content [mg]	3
UV radiance	exempt
Brand	Tungsrám
Cap/Base	2G11

## Performance data

Colour Code	830
Rated Lumens [lm]	4800
Weighted energy consumption [kWh/1000h]	60.5
Energy efficiency class (EEC)	G
Rated Life [h]	20000
Rated median life on electronic (HF / ECG) ballast on IEC 12-hour cycle	22500
Rated median life on electronic (HF / ECG) ballast on IEC 3-hour cycle	20000
Nominal correlated colour temperature (CCT) [K]	3000
Nominal lumens [lm]	4800
Colour Rendering Index (CRI) [Ra]	82

## Electrical data

Rated power [W]	55.0
Operating Temperature (MIN) [°C]	-15
Starting ambient temperature range	-15
Dimming Capability	Yes
Nominal power [W]	55
Nominal lamp voltage [V]	101

## Logistic data

Shipment	Standard
DUN Code	15994100011191
EAN Code	5994100011194
Pack Quantity	25
Layer quantity	250 EUR, 350 UK
Layer quantity EUR	250
Layer quantity UK	350
Pallet quantity EUR (PC)	1000
Pallet quantity UK (PC)	1400
Outer case size	572 x 141 x 238 (mm)
Product status	Available



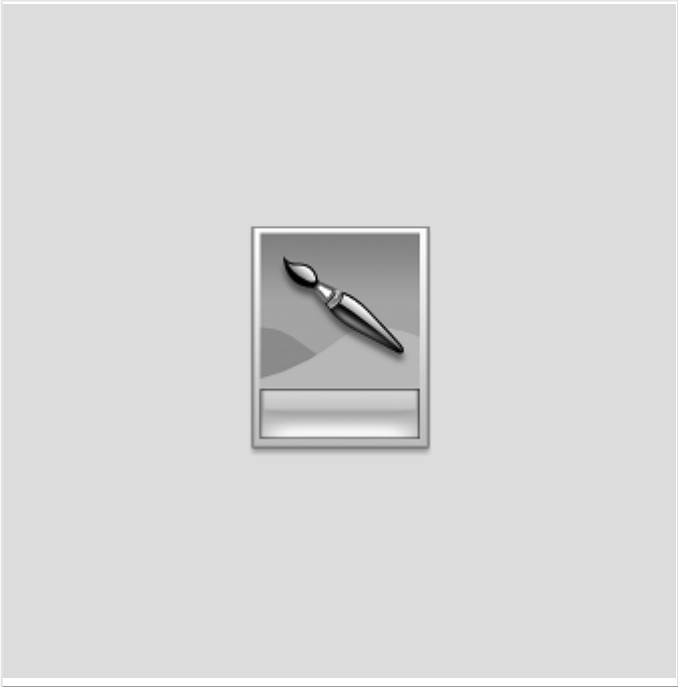
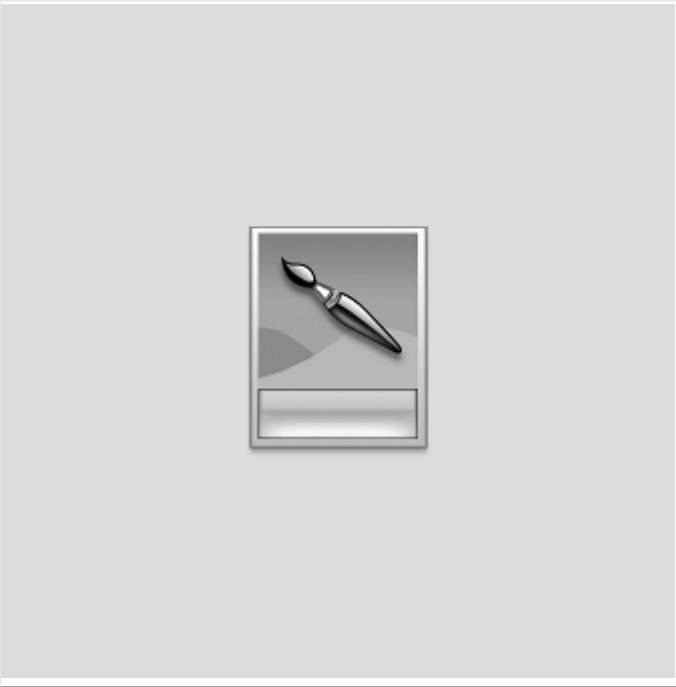
Biax™ L LongLast™ 4-pin, External Starter

Req.

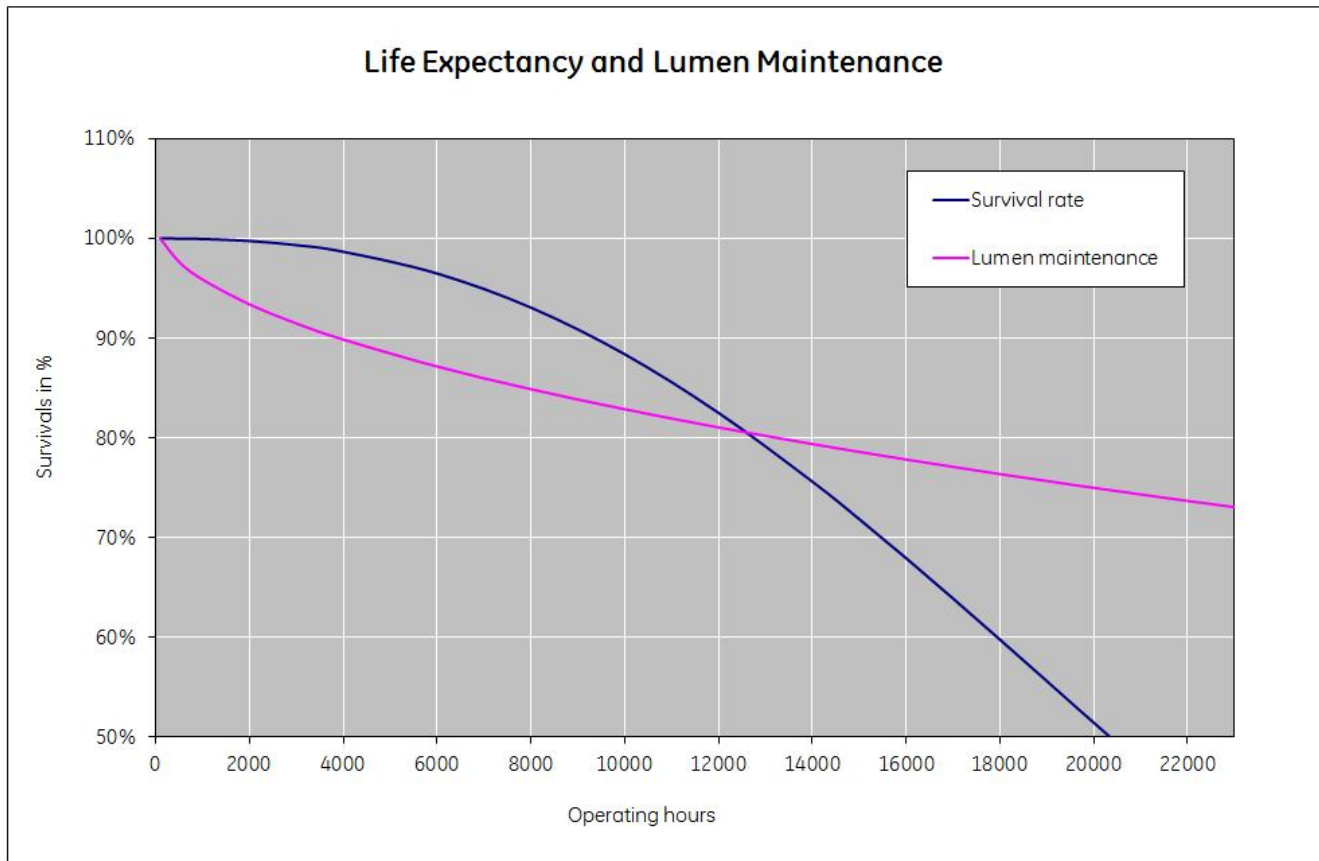
F55W BX/T5/830/4P TU

93105975

Technical drawing



## Survival data



## Downloads & Links

[Go to the catalog site \(HTTP\)](#)

[CFL Non-Integrated Spectrum Catalogue \(PDF\)](#)

[LongLast™ Biax™ L Data sheet \(PDF\)](#)

[Lighting design tools & calculators \(HTTP\)](#)

[High-res images / Technical drawings \(HTTP\)](#)