



CDVI

Security to Access

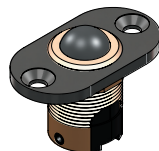
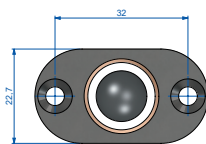
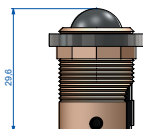
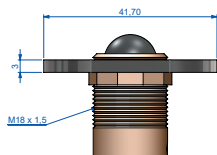
BALLCONTACT

Contacteur à bille

FR

1] PRÉSENTATION DU PRODUIT

- Certification Résistance au Feu porte bois EI30
Laboratoire CSTB EN1634-2
- Contacteur à bille pour portes et fenêtre
- 1 contact NO/NF (report d'information)
- Bille en acier inoxydable (résistant à l'usure, aux chocs et à la corrosion)
- Course de réglage 9 mm
- Précâblé 4 mètres
- Tension max. : 250V AC
- Intensité max. : 5 A



2] PRÉCONISATIONS DE FIXATION

- Sur support métal : 2 vis autoforeuse à tête fraisée 3,9x15 mm (non fournies).
- Sur support bois : 2 vis de type Parker à tête fraisée 3,9x15 mm (non fournies).

3] RACCORDEMENT

Couleurs	Correspondance
Jaune	NO
Noir	COM
Rouge	NC

CDVI FRANCE + EXPORT
+33 (0)1 48 91 01 02
www.cdvi.com

CDVI UK
[UNITED KINGDOM
IRELAND]
+44 (0)1628 531300
www.cdvi.co.uk

CDVI GERMANY
+49 0175-2923901
www.cdvi.de

CDVI AMERICAS
[CANADA - USA]
+1 (450) 682 7945
www.cdvi.ca

CDVI CHINA
+86 (0)10 84606132/82
www.cdvinchina.cn

CDVI IBÉRICA
[SPAIN - PORTUGAL]
+34 (0)935 390 966
www.cdviberica.com

CDVI BENELUX
[BELGIUM - NETHERLAND -
LUXEMBOURG]
+32 (0) 56 73 93 00
www.cdviBenelux.com

CDVI SWEDEN
[SWEDEN - DENMARK -
NORWAY FINLAND]
+46 (0)31 760 19 30
www.cdvi.se

CDVI ITALIA
+39 0321 90 573
www.cdvi.it

CDVI TAIWAN
+886 (0)42471 2188
www.cdvinchina.cn

CDVI SUISSE
+41 (0)21 882 18 41
www.cdvi.ch

CDVI MAROC
+212 (0)5 22 48 09 40
www.cdvi.ma

CDVI POLSKA
+48 12 659 23 44
www.cdvi.com.pl



CDVI

Security to Access

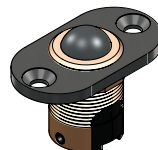
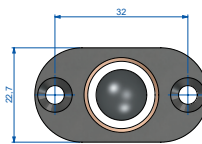
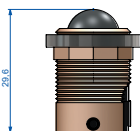
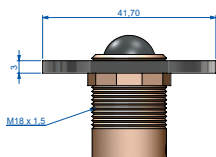
BALLCONTACT

Ball contact

EN

1] PRODUCT PRESENTATION

- Fire resistance certification EI30 wooden door Laboratory CSTB EN1634-2
- Ball contact for doors and windows
- 1 NO/NC contact (information transfer)
- Stainless steel ball (wear, shock and corrosion resistant)
- 9 mm range of movement
- Pre-wired 4 meters
- Max. voltage : 250V AC
- Max. current : 5 A



2] Mounting recommendations

- On metal supports: 2 self-drilling countersunk screws 3.9x15 mm (not supplied).
- On wood: 2 Parker type countersunk screws 3.9x15 mm (not supplied)

3] CONNECTION

Colors	Correspondence
Yellow	NO
Black	COM
Red	NC

CDVI FRANCE + EXPORT
+33 (0)1 48 91 01 02
www.cdvi.com

CDVI UK
[UNITED KINGDOM
IRELAND]
+44 (0)1628 531300
www.cdvi.co.uk

CDVI GERMANY
+49 0175-2923901
www.cdvi.de

CDVI AMERICAS
[CANADA - USA]
+1 (450) 682 7945
www.cdvi.ca

CDVI CHINA
+86 (0)10 84606132/82
www.cdvinchina.cn

CDVI IBÉRICA
[SPAIN - PORTUGAL]
+34 (0)935 390 966
www.cdviberica.com

CDVI BENELUX
[BELGIUM - NETHERLAND -
LUXEMBOURG]
+32 (0) 56 73 93 00
www.cdviBenelux.com

CDVI SWEDEN
[SWEDEN - DENMARK -
NORWAY FINLAND]
+46 (0)31 760 19 30
www.cdvi.se

CDVI ITALIA
+39 0321 90 573
www.cdvi.it

CDVI TAIWAN
+886 (0)42471 2188
www.cdvinchina.cn

CDVI SUISSE
+41 (0)21 882 18 41
www.cdvi.ch

CDVI MAROC
+212 (0)5 22 48 09 40
www.cdvi.ma

CDVI POLSKA
+48 12 659 23 44
www.cdvi.com.pl