



MASTER LEDtube EM/ Mains T8



MAS LEDtube 1050mm 16W 830 T8

The Philips MASTER LEDtube integrates a LED light source into a traditional fluorescent form factor. Its unique design creates a perfectly uniform visual appearance, which cannot be distinguished from traditional fluorescent. These T8 LED tubes are the right choice for absolute performance and are designed to stand up to everyday conditions. Unparalleled savings thanks to low energy consumption and an exceptionally long lifetime ensure this tube masters every demanding application.

Warnings and Safety

- NOTE: The overall energy efficiency and light distribution of any installation that uses these lamps will be determined by the design of the installation.

Product data

General Information	
Cap-Base	G13 ROT
Nominal lifetime	75,000 hour(s)
Switching Cycle	200,000
Lighting Technology	LED
Flux measurement reference	Sphere
Light Technical	
Color Code	830 [CCT of 3000K]
Beam Angle (Nom)	160 degree(s)
Luminous Flux	2,300 lm
Color Designation	White (WH)
Correlated Color Temperature (Nom)	3000 K
Luminous Efficacy (rated) (Nom)	143 lm/W

Color Consistency	<6
Color rendering index (CRI)	80
LLMF At End Of Nominal Lifetime (Nom)	70 %
Photobiological safety according to EN 62471	RG0
Operating and Electrical	
Line Frequency	50 to 60 Hz
Input Frequency	50 to 60 Hz
Power Consumption	16 W
Lamp Current (Max)	83 mA
Lamp Current (Min)	68 mA
Starting Time (Nom)	0.5 s
Warm-up time to 60% light	0.5 s
Power Factor (Fraction)	0.9

MASTER LEDtube EM/Mains T8

Voltage (Nom)	220-240 V
Ballast Compatibility	EM/Mains
LED alternative to fluorescent lamp power	38 W
Inrush current at mains	8.4
Max. lamp no. on MCB B type 10A – Mains	90
Max. lamp no. on MCB B type 10A – EM ballast without Compensation Capacitor.	90
Max. lamp no. on MCB B type 10A – EM ballast with Compensation Capacitor.	15
Max. lamp no. on MCB B type 16A – Mains	140
Max. lamp no. on MCB B type 16A – EM ballast without Compensation Capacitor.	150
Max. lamp no. on MCB B type 16A – EM ballast with Compensation Capacitor.	25

Temperature

T-Case Maximum (Nom)	55 °C
----------------------	-------

Controls and Dimming

Dimmable	No
----------	----

Mechanical and Housing

Bulb Finish	Frosted
Bulb Material	Plastic
Product Length	1,100 mm
Bulb Shape	T8
Net Weight (Piece)	0.200 kg

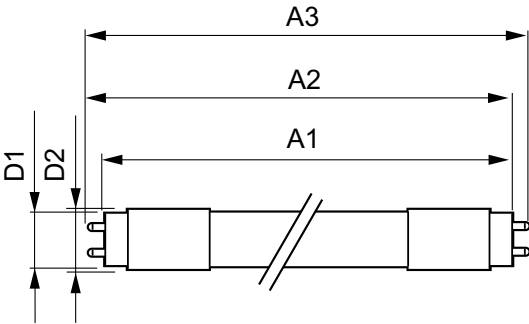
Approval and Application

Energy Efficiency Class	D
Energy Saving Product	Yes
Approval Marks	RoHS compliance CE marking KEMA Keur certificate ENEC certificate
Energy Consumption kWh/1000 h	16 kWh
EPREL Registration Number	1206965
CE mark	Yes
EU RoHS compliant	Yes
Flickering value (PstLM) – Flickering value as per EN 61000-3-3	0.5
Stroboscopic effect visibility measure (SVM)	0.2
Ambient temperature range	-20 °C to 45 °C

Product Data

Order product name	MAS LEDtube 1050mm 16W 830 T8
Full product name	MAS LEDtube 1050mm 16W 830 T8
Full product code	871869672855000
Order code	929001375602
Material Nr. (12NC)	929001375602
Numerator – Quantity Per Pack	1
EAN/UPC – Product/Case	8718696728550
Numerator – Packs per outer box	10
EAN/UPC – Case	8718696728567

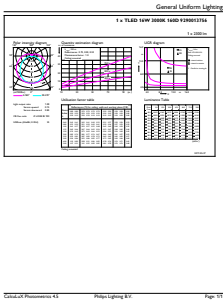
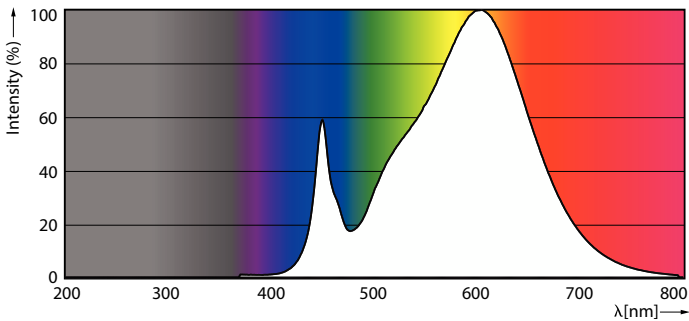
Dimensional drawing



Product	D1	D2	A1	A2	A3
MAS LEDtube 1050mm 16W 830 T8	25.8 mm	28 mm	1,045.8 mm	1,052.9 mm	1,060 mm

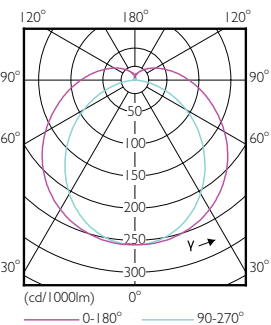
MASTER LEDtube EM/Mains T8

Photometric data



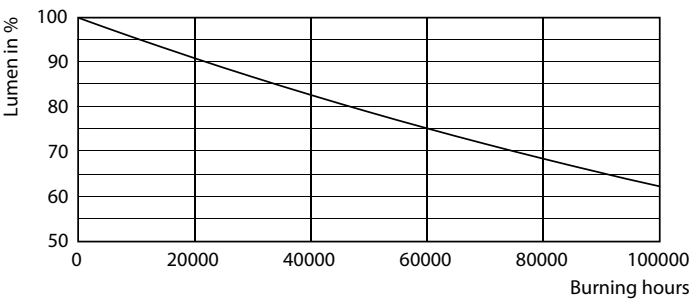
Spectral Power Distribution Colour - MAS LEDtube 1050mm 16W 830 T8

General uniform lighting - MAS LEDtube 1050mm 16W 830 T8

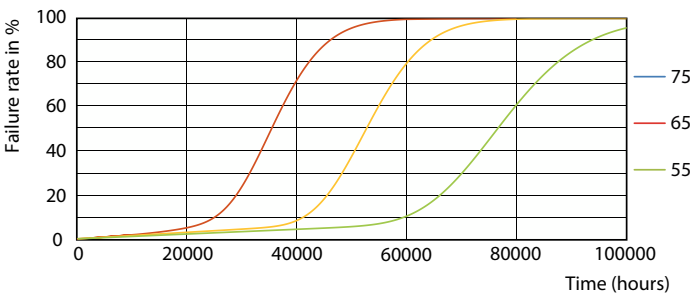


Light Distribution Diagram - MAS LEDtube 1050mm 16W 830 T8

Lifetime



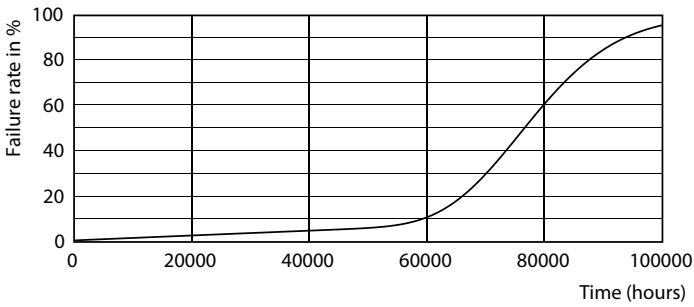
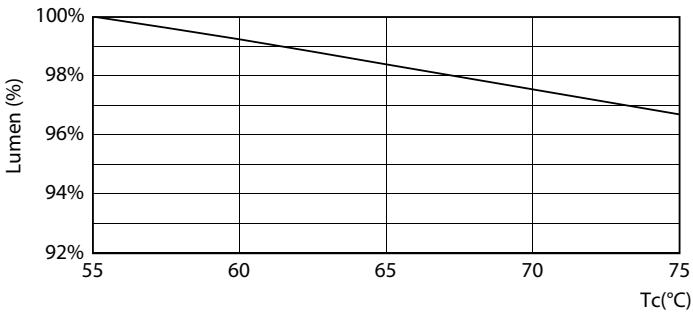
Lumen Maintenance Diagram - MAS LEDtube 1050mm 16W 830 T8



FailureRate

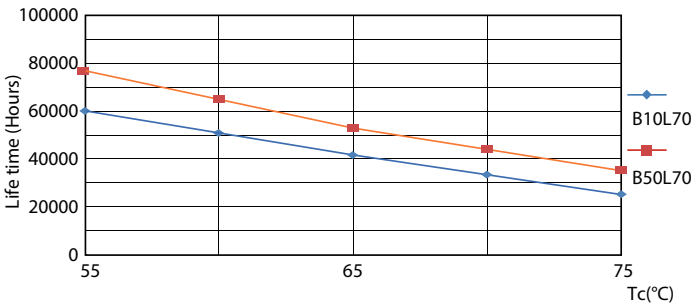
MASTER LEDtube EM/Mains T8

Lifetime



Lumen Maintenance Diagram - MAS LEDtube 1050mm 16W 830 T8

Life Expectancy Diagram



LifetimeVsTc

