

PRODUCT DATASHEET

HQI-E 400 W/D PRO

POWERSTAR HQI®-E coated 250...400 W | Metal halide lamps with quartz technology for enclosed luminaires



Areas of application

- Factories and workshops
- Exhibition halls and trade fairs
- Sports halls and multi-purpose halls
- Approved only for use in enclosed luminaires
- Outdoor applications only in suitable luminaires

Product benefits

- E40 screw base for simple lamp handling
- UV values significantly below the maximum permitted thresholds to IEC 61167 thanks to UV filter

Product features

- POWERSTAR® quartz technology
- Light colors: neutral white (NDL), daylight (D)



TECHNICAL DATA

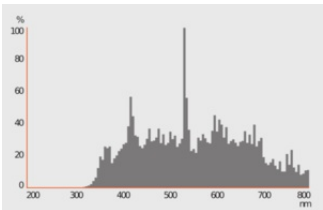
Electrical data

Nominal wattage	400 W
Construction wattage	430.00 W
Nominal voltage	115 V
Ignition voltage	4.0/5.0 kVp ¹⁾
Operating mode	Conventional control gear (CCG) and ignitor
Nominal current	4 A
PFC capacitor at 50 Hz	45 µF

1) Minimum / Maximum

Photometrical data

Luminous flux	34000 lm
Luminous efficacy	79 lm/W
Color temperature	5200 K
Color rendering index Ra	≤ 90
Light color	952
Rated LLMF at 2,000 h	0.92
Rated LLMF at 4,000 h	0.90
Rated LLMF at 6,000 h	0.87
Rated LLMF at 8,000 h	0.85
Rated LLMF at 12,000 h	0.81
UV protection	Yes



384076_HQI_T_D_PRO

Dimensions & Weight

Overall length	290.00 mm
----------------	-----------

Diameter	120,0 mm
Product weight	230.00 g

Temperatures & operating conditions

Maximum permitted outer bulb temperature	400 °C
Maximum permitted base edge temperature	250 °C

Lifespan

Rated lamp survival factor at 2,000 h	0.96
Rated lamp survival factor at 4,000 h	0.94
Rated lamp survival factor at 6,000 h	0.93
Rated lamp survival factor at 8,000 h	0.88
Rated lamp survival factor at 12,000 h	0.81
Lifespan B50	16000 h

Additional product data

Base (standard designation)	E40
Mercury content	73.5 mg
Design / version	Coated
Product remark	With NAV® control gear

Capabilities

Dimmable	No
Burning position	Any
Enclosed luminaire required	Yes
Hot restart	No

Certificates & Standards

Energy efficiency class	G
Energy consumption	430.00 kWh/1000h

Country-specific categorizations

ILCOS	ME/UB-250/952-H/E/SL-E40-120/290
Order reference	HQI-E 400W/D PR

Energy labelling regulation data acc EU 2019/2015





Lighting technology used	MH
Non-directional or directional	NDLS


Mains or non-mains	NMLS
Light source cap-type (or other electric interface)	E40
Connected light source (CLS)	No
Color-tuneable light source	No
Envelope	NON_CLEAR
High luminance light source	No
Anti-glare shield	No
Correlated colour temperature type	SINGLE_VALUE
Claim of equivalent power	No
Length	290.00 mm
Height	120,0 mm
Width	120,0 mm
Chromaticity coordinate x	0,340
Chromaticity coordinate y	0,355
Beam angle correspondence	SPHERE_360
EPREL ID	546559
Model number	AC34333

Safety advice

- Do not stare at the operating light source: The luminaire should be positioned so that prolonged staring into the luminaire at a distance closer than 4 m is not expected.
- Disconnect mains before installation.
- Must not be used if outer bulb is defective.
- Lamp to be used only in a closed luminaire.

DOWNLOAD DATA

	Documents and certificates	Document name
	User instruction / safety instructions	High Intensity Discharge Lamp UI
	Declarations of conformity	EC Declaration of Conformity - 2021 9C1-4077886-EN-00 - HQI
	Certificates	EAC RU C-DE.AYA46.B.16087_20 13.10.2020-12.10.2025 Rostest-Moskva - MH single capped
	Certificates	EAC N RU D-DE.MU62.B.00932_20 06.03.2020-05.03.2025 Prommash Test - MH

Photometric and lighting design files		Document name
	Spectral power distribution	384076_HQI_T_D_PRO

LOGISTICAL DATA

Product code	Packaging unit (Pieces/Unit)	Dimensions (length x width x height)	Gross weight	Volume
4008321677884	Round wrap 1	125 mm x 125 mm x 295 mm	274.00 g	4.61 dm³
4008321677891	Shipping box 12	541 mm x 416 mm x 317 mm	4239.00 g	71.34 dm³

The mentioned product code describes the smallest quantity unit which can be ordered. One shipping unit can contain one or more single products. When placing an order, for the quantity please enter single or multiples of a shipping unit.

DISCLAIMER

Subject to change without notice. Errors and omission excepted. Always make sure to use the most recent release.