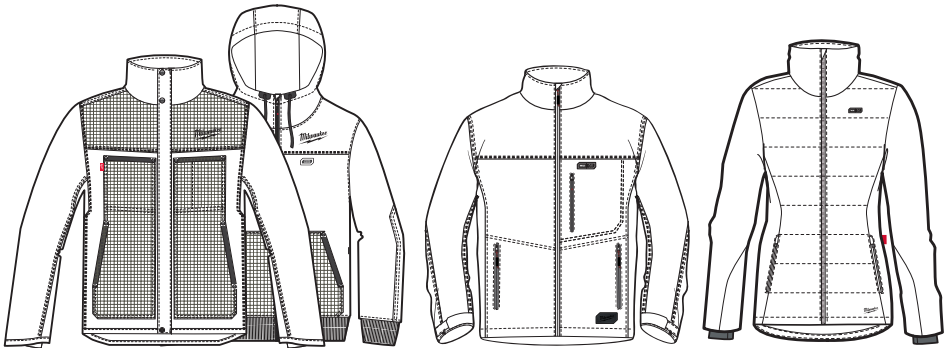
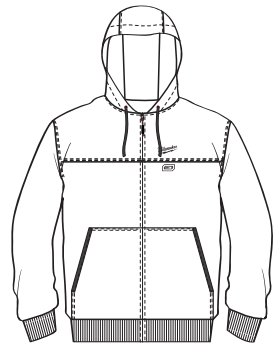




Nothing but **HEAVY DUTY**.®



- M12 HJBL4**
- M12 HJGREY4**
- M12 HJCAMO5**
- M12 HJLADIES2**
- M12 HHBL3**
- M12 HHGREY3**

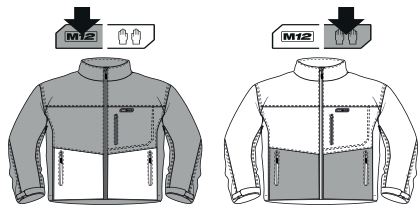


Original instructions
Originalbetriebsanleitung

TECHNICAL DATA	HEATED JACKET	M12 HJBL4 M12 HJGREY4	M12 HJCAM05	M12 HJLADIES2
Run time high/med/low (with battery 2.0 Ah)	approx.	3 / 4 / 8 h	3 / 4 / 8 h	2 / 3 / 6 h
Size		S/M/L/XL/2XL	S/M/L/XL/2XL	S/M/L/XL/2XL
Battery		Li-Ion	Li-Ion	Li-Ion
Battery voltage		12 V	12 V	12 V
Weight according EPTA-Procedure 01/2014 (2.0 Ah)				
S		1,5 kg	1,3 kg	1,1 kg
M		1,5 kg	1,3 kg	1,1 kg
L		1,6 kg	1,4 kg	1,2 kg
XL		1,7 kg	1,4 kg	1,2 kg
2XL		1,8 kg	1,5 kg	1,3 kg
Recommended ambient operating temperature		-18°C ... +50 °C		
Recommended battery types		M12B...		
Recommended charger		M12-18 C; M12-18 FC; M12-18 AC; M12 C4; C12 C		

OVERVIEW

Power Button
To turn on, press and hold the heated jacket power button (about 2 seconds).

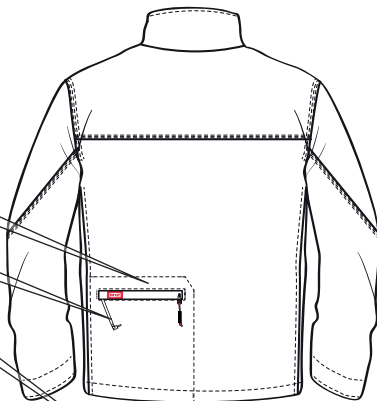
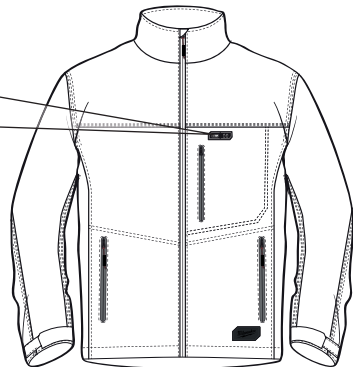


Temperature setting can be adjusted at any time by pressing the heated jacket power button. Each press will cycle through the heated jacket's temperature settings.

High Temp: red LED continuous
Medium Temp: white LED continuous
Low Temp: blue LED continuous

To turn off the heated jacket, press and hold the heated jacket power button until the LEDs turn off (about 3 seconds).

If the heated jacket turns off unexpectedly, check connections and charge the battery pack.



Battery Holder pocket

Power cable

Battery holder

USB Port
to charge cell phone, MP3 player or other devices that uses less than 5V, 1A DC electrical current.

Power cable port
to connect the jacket to the battery holder

Fuel gauge to display the battery packs remaining power

100 % █ █ █ █ █
75 % █ █ █ █
50 % █ █ █
25 % █ █ █

USB power button
to turn on the USB power port
The USB port will remain on for two hours before turning off automatically.

TECHNICAL DATA	HEATED JACKET	M12 HHBL3	M12 HHGREY3
Run time high/med/low (with battery 2.0 Ah)	approx.	3 / 4 / 8 h	3 / 4 / 8 h
Size		S/M/L/XL/2XL	S/M/L/XL/2XL
Battery		Li-Ion	Li-Ion
Battery voltage		12 V	12 V
Weight according EPTA-Procedure 01/2014 (2.0 Ah)			
S		1,1 kg	1,1 kg
M		1,1 kg	1,1 kg
L		1,1 kg	1,2 kg
XL		1,2 kg	1,2 kg
2XL		1,2 kg	1,2 kg
Recommended ambient operating temperature		-18°C ... +50 °C	
Recommended battery types		M12B...	
Recommended charger		M12-18 C; M12-18 FC; M12-18 AC; M12 C4; C12 C	

OVERVIEW

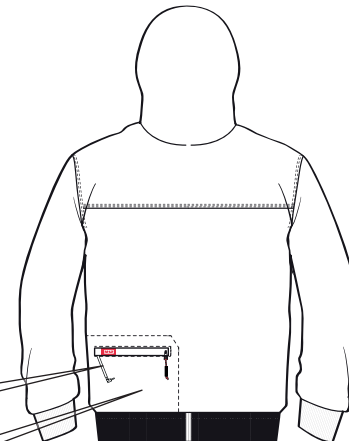
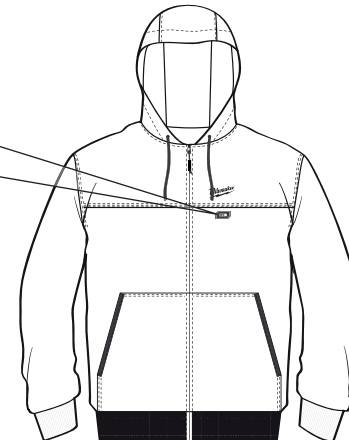
Power Button
To turn on, press and hold the heated jacket power button (about 1 second).

Temperature setting can be adjusted at any time by pressing the heated jacket power button. Each press will cycle through the heated jacket's temperature settings.

High Temp: red LED continuous
Medium Temp: white LED continuous
Low Temp: blue LED continuous

To turn off the heated jacket, press and hold the heated jacket power button until the LEDs turn off (about 3 seconds).

If the heated jacket turns off unexpectedly, check connections and charge the battery pack.



Power cable

Battery Holder pocket

Battery holder

Power cable port

⚠ WARNING! Read all safety warnings and all instructions.
 Failure to follow the warnings and instructions may result in electric shock, fire and/or serious injury.
Save all warnings and instructions for future reference.

SAFETY INSTRUCTIONS

Do not use this heated jacket with an infant, child, a helpless person, or anyone insensitive to heat, such as a person with poor blood circulation.
 Never use if inner liner is wet.
 Heating elements are not recommended to touch bare skin.
 Shut off power immediately if discomfort occurs.
 Do not allow the cords to be pinched.
 If improper operation of this heated jacket is observed, discontinue its use immediately and contact a MILWAUKEE service facility for repair.
 Do not use pins. They may damage the electric wiring.
 Disconnect and remove battery pack and battery holder from battery holder pocket before washing.
 Do not dry clean. Do not use drycleaning fluid on this heated jacket. Do not bleach. Cleaning solvents may have a deteriorating effect on the insulation of the heating element.
 Do not iron.

Maintain labels and nameplates. These carry important information. If unreadable or missing, contact a MILWAUKEE service facility for a free replacement.

When storing the appliance, allow it to cool down before folding. Examine the appliance frequently for signs of wear or damage. If there are such signs, if the appliance has been misused or does not work, return it to the supplier before switching it on again.

This appliance must not be used by persons insensitive to heat and other very vulnerable persons who are unable to react to overheating.

Children under the age of three are not to use this appliance due to their inability to react to overheating.

Do not crease the appliance by placing items on top of it during storage.

WARNING: In order to avoid the possibility of heatstroke, disconnect the clothing when moving to an environment having significantly higher temperature.

Do not crease the appliance by placing items on top of it during storage.

This appliance is not intended for medical use in hospitals

The appliance is not to be used by young children over the age of three unless the controls have been pre-set by a parent or guardian, or unless the child has been adequately instructed on how to operate the controls safely.

Clean the appliance only with a damp sponge.

Do not dispose of used battery packs in the household refuse or by burning them. Milwaukee Distributors offer to retrieve old batteries to protect our environment.

Do not store the battery pack together with metal objects (short circuit risk).

Use only System Milwaukee 12 V chargers for charging System Milwaukee 12 V battery packs. Do not use battery packs from other systems.

Never break open battery packs and chargers and store only in dry rooms. Keep dry at all times.

Battery acid may leak from damaged batteries under extreme load or extreme temperatures. In case of contact with battery acid wash it off immediately with soap and water. In case of eye contact rinse thoroughly for at least 10 minutes and immediately seek medical attention.

No metal parts must be allowed to enter the battery section of the charger (short circuit risk).

SPECIFIED CONDITIONS OF USE

The heated jacket may be used for warming up the body in cold environments.

Do not use this product in any other way as stated for normal use.

OPERATION

If the heated jacket does not start or operate properly with a fully charged battery pack, clean the contacts on the battery pack. If the heated jacket still does not work properly, return the heated jacket, charger and battery pack, to a MILWAUKEE service facility for repairs.

BATTERIES

New battery packs reach full loading capacity after 4 - 5 chargings and dischargings. Battery packs which have not been used for some time should be recharged before use.

Temperatures in excess of 50°C (122°F) reduce the performance of the battery pack. Avoid extended exposure to heat or sunshine (risk of overheating).

The contacts of chargers and battery packs must be kept clean.

For an optimum life-time, the battery packs have to be fully charged, after used.

To obtain the longest possible battery life remove the battery pack from the charger once it is fully charged.

For battery pack storage longer than 30 days:

Store the battery pack where the temperature is below 27°C and away from moisture

Store the battery packs in a 30% - 50% charged condition

Every six months of storage, charge the pack as normal.

TRANSPORTING LITHIUM BATTERIES

Lithium-ion batteries are subject to the Dangerous Goods Legislation requirements.

Transportation of those batteries has to be done in accordance with local, national and international provisions and regulations.

- The user can transport the batteries by road without further requirements.
- Commercial transport of Lithium-Ion batteries by third parties is subject to Dangerous Goods regulations. Transport preparation and transport are exclusively to be carried out by appropriately trained persons and the process has to be accompanied by corresponding experts.

When transporting batteries:






- Ensure that battery contact terminals are protected and insulated to prevent short circuit.
- Ensure that battery pack is secured against movement within packaging.
- Do not transport batteries that are cracked or leak.

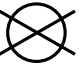



Check with forwarding company for further advice

WARRANTY

Jacket	1 year warranty
C12 BH / M12 BC	3 years warranty at registration

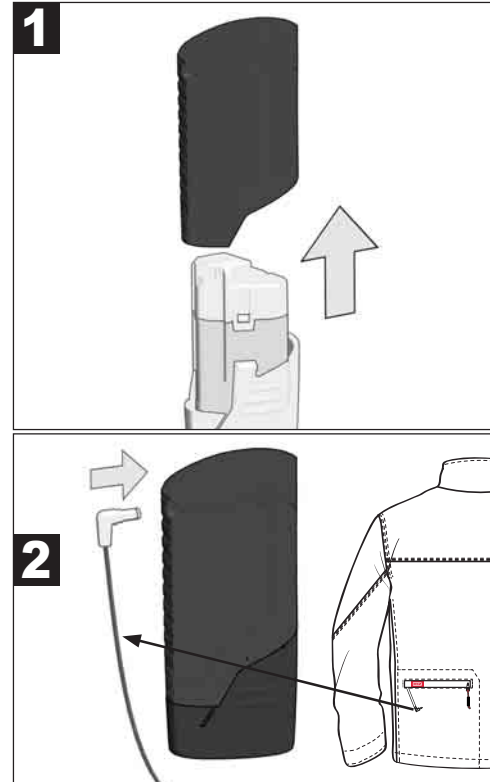
LABEL

-  Machine wash Gentle Cycle in warm water.
-  Tumble dry low heat.
-  Do not bleach
-  Do not iron
-  Do not wring or twist

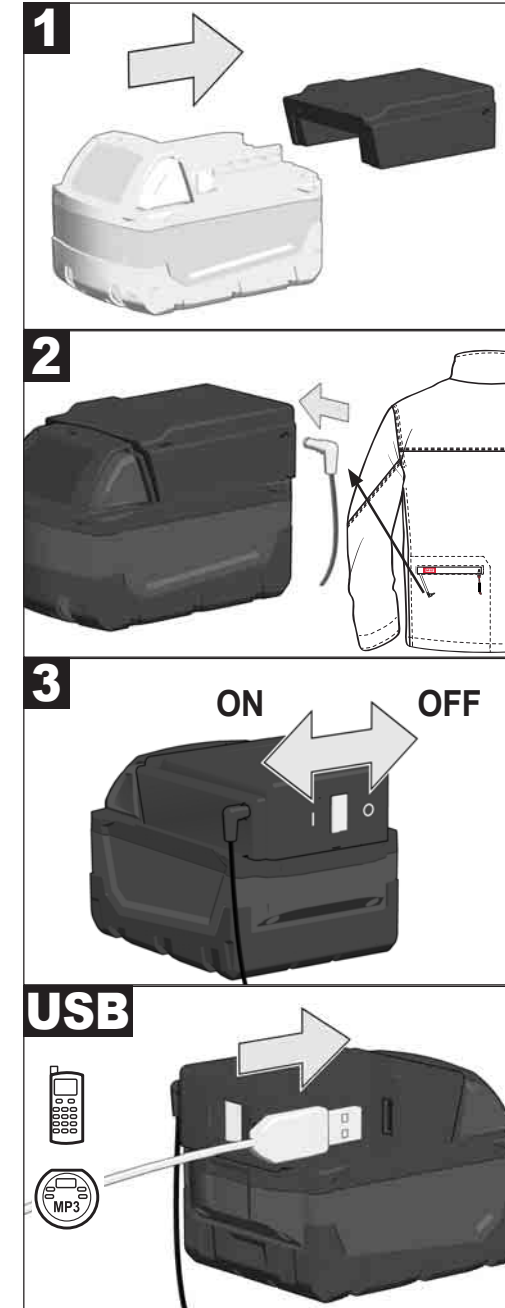
-  Do not dry clean
-  Not to be used by very young children (0-3 years)
-  Do not insert pins
-  Do not dispose electric tools, batteries/ rechargeable batteries together with household waste material. Electric tools and batteries that have reached the end of their life must be collected separately and returned to an environmentally compatible recycling facility. Check with your local authority or retailer for recycling advice and collection point.

CE European Conformity Mark
UKCA British Conformity Mark

ADAPTER C12BH, M12 BC



ADAPTER M18 USB (ACCESSORY)



Copyright 2020
Techtronic Industries GmbH
Max-Eyth-Str. 10
71364 Winnenden
Germany
+49 (0) 7195-12-0
www.milwaukeeetool.eu

Techtronic Industries (UK) Ltd
Fieldhouse Lane
Marlow Bucks SL7 1HZ
UK

**EAC UK
CA**

(01.21)

4931 4700 34-GB-D