

Part number

COB 16 CMS



Insulating insert carrier enclosure for mobile mounting, COB panel supports series, side cable entry with cable clamp, for inserts with 77,5 x 27 mm screw fixing centre distance

Product description		Material properties	
Product type	Insulating insert carrier enclosure for mobile mounting	Colour	RAL 7032 grey
Series	COB panel supports	RoHs conformity	Compliant with exemption 6(c): copper alloy containing up to 4% lead by weight
Cable entry	Side cable entry with cable clamp	China RoHs - EFUP	50
Specification	For inserts with 77,5 x 27 mm screw fixing centre distance	REACH SVHC substances	Yes Lead
Technical data		SCIP number	B008b8e4-629e-4e70-ab7d-b3b67464925d
IP degree of protection	IP20	Approvals / Standards	
Further technical details		Certifications	DNV, BV
Weight	85,00 g	UL	ECBT2
Operating temperature range (min, max)	-40°C...+125°C	cUL	ECBT8
		General ordering information	
		EAN13 code	8015747036610
		eCl@ss 8.1	27440202
		ETIM 7.0	EC000437
		Packaging Information	
		Packaging length	225,00 mm
		Packaging height	130,00 mm
		Packaging width	150,00 mm
		Packaging weight	0,85 kg
		Packaging volume	4,39 dm³
		Packaging description	Carton box
		Packaging quantity	10 Pcs
		Packaging EAN code	8015747036627
		Sub-packaging weight	0,09 kg
		Sub-packaging description	Plastic packaging
		Sub-packaging quantity	1 Pcs
		Sub-packaging EAN barcode	8015747036634

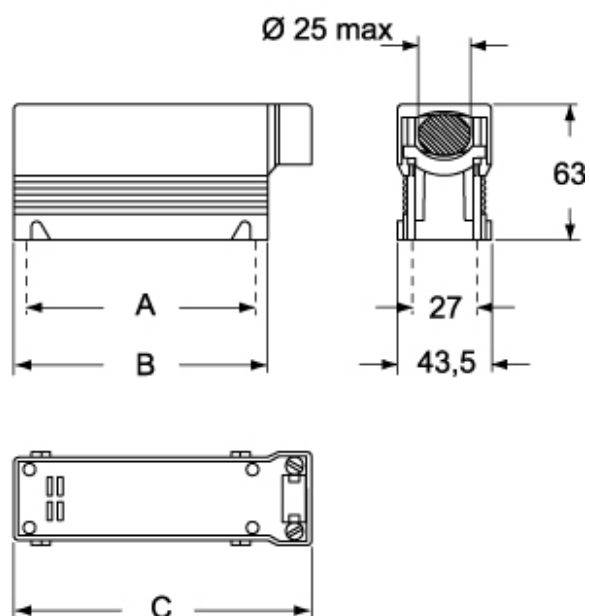
Part number

COB 16 CMS



Catalogue drawings

COB..CMS



Notes

Dimensions shown in mm are not binding and may be changed without notice.