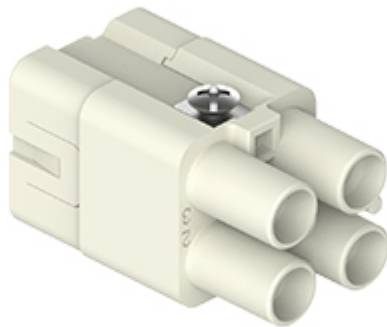


Part number

CQ4F 03/2



Female insert, CQ series, crimp connection, 3 + 2 poles + PE, 40 A 400 V 6 kV 3 / 10 A 250 V 4 kV 3, size "21.21"

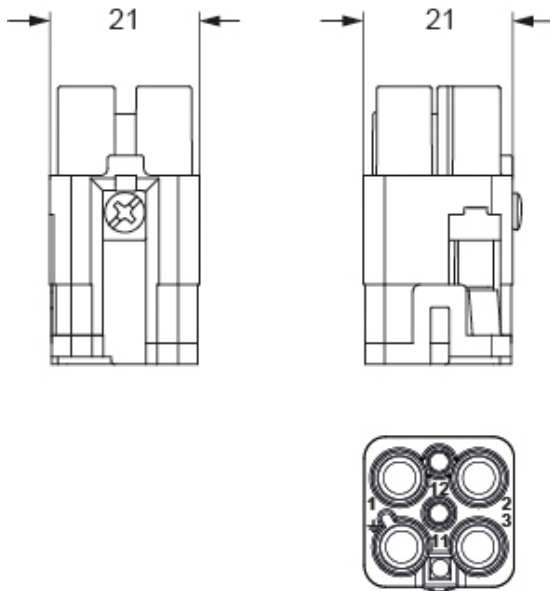
Product description		Material properties	
Product type	Insert	Main material	Polycarbonate (PC)
Series	CQ	Colour	RAL 7032 grey
Connection type	Crimp connection	RoHs conformity	Compliant
Gender	Female	Approvals / Standards	
N. of poles	3 poles +	Certifications	EAC
Auxiliary poles	2 poles	UL	ECBT2, PVVA2
Size	Size "21.21"	cUL	ECBT8, PVVA8
Technical data		General ordering information	
Current	40 A	EAN13 code	8015747269506
Voltage	400 V	eCl@ss 8.1	27440205
Rated impulse withstand voltage	6 kV	ETIM 7.0	EC000438
Pollution degree	3	Packaging Information	
Rated voltage according to UL/CSA	600 V	Packaging length	200,00 mm
IP degree of protection	IP20 without enclosure, IP65/IP66/IP68/IP69 with enclosure	Packaging height	245,00 mm
Further technical details		Packaging width	146,00 mm
Characteristics according to EN 61984	40 A 400 V 6 kV 3 / 10 A 250 V 4 kV 3	Packaging weight	3,20 kg
Mating cycles	≥ 500	Packaging volume	7,15 dm ³
Insulation resistance	≥ 10 GΩ	Packaging description	Carton box
Contact resistance	≤ 0,3 mΩ (3 poles) / ≤ 3 mΩ (2 poles)	Packaging quantity	200 Pcs
Weight	16,00 g	Packaging EAN code	8015747269537
Operating temperature range (min, max)	-40 °C ... +125 °C	Sub-packaging length	116,00 mm
UL 94 flammability rating	V-0	Sub-packaging height	43,00 mm
		Sub-packaging width	180,00 mm
		Sub-packaging weight	0,64 kg
		Sub-packaging volume	0,90 dm ³
		Sub-packaging description	Carton tray
		Sub-packaging quantity	40 Pcs
		Sub-packaging EAN barcode	8015747269544

Part number

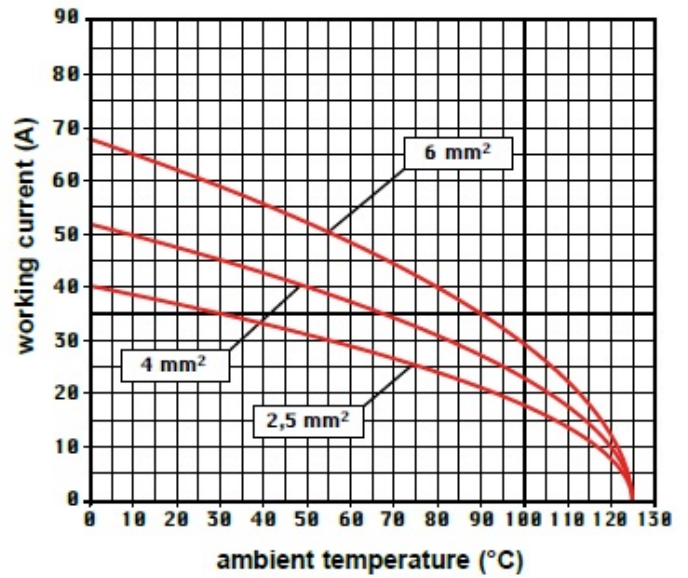
CQ4F 03/2



Catalogue drawings



Derating curves



Notes

Dimensions shown in mm are not binding and may be changed without notice.