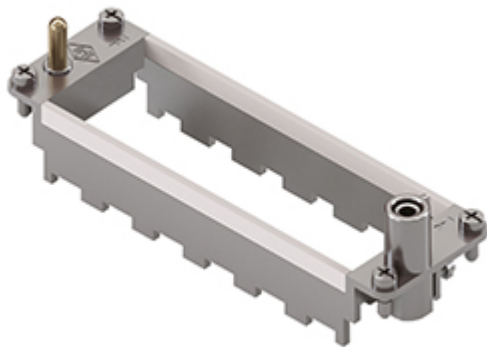


Part number

# CX 06 TF



Frame for Mixo inserts, 6 modules, for 6 modular inserts and enclosures size "104.27", frame for housings

#### Product description

|                      |  |
|----------------------|--|
| <b>Product type</b>  | Frame for Mixo inserts   |
| <b>Size</b>          | 6 modules  |
| <b>Specification</b> | For 6 modular inserts and enclosures size "104.27"<br>Frame for housings |

#### Further technical details

|                                  |         |
|----------------------------------|---------|
| <b>Weight</b>                    | 63,50 g |
| <b>UL 94 flammability rating</b> | V-0     |

#### Approvals / Standards

|            |       |
|------------|-------|
| <b>UL</b>  | ECBT2 |
| <b>cUL</b> | ECBT8 |

#### General ordering information

|                   |               |
|-------------------|---------------|
| <b>EAN13 code</b> | 8015747041928 |
| <b>eCl@ss 8.1</b> | 27440210      |
| <b>ETIM 7.0</b>   | EC002310      |

#### Packaging Information

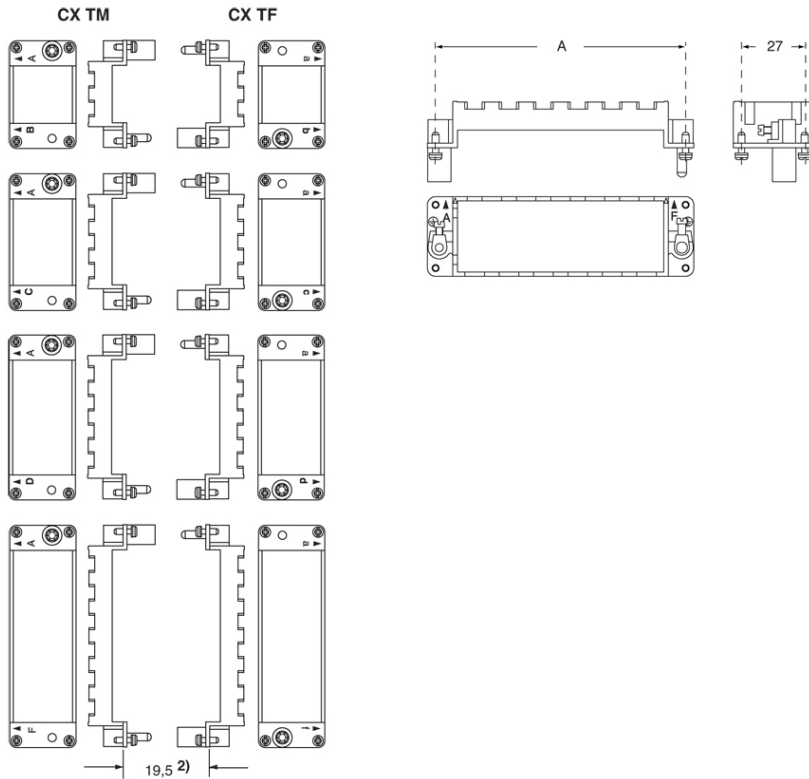
|                                  |                      |
|----------------------------------|----------------------|
| <b>Packaging length</b>          | 270,00 mm            |
| <b>Packaging height</b>          | 75,00 mm             |
| <b>Packaging width</b>           | 180,00 mm            |
| <b>Packaging weight</b>          | 2,40 kg              |
| <b>Packaging volume</b>          | 3,65 dm <sup>3</sup> |
| <b>Packaging description</b>     | Carton box           |
| <b>Packaging quantity</b>        | 30 Pcs               |
| <b>Packaging EAN code</b>        | 8015747041935        |
| <b>Sub-packaging length</b>      | 113,00 mm            |
| <b>Sub-packaging height</b>      | 36,00 mm             |
| <b>Sub-packaging width</b>       | 180,00 mm            |
| <b>Sub-packaging weight</b>      | 0,40 kg              |
| <b>Sub-packaging volume</b>      | 0,73 dm <sup>3</sup> |
| <b>Sub-packaging description</b> | Carton tray          |
| <b>Sub-packaging quantity</b>    | 5 Pcs                |
| <b>Sub-packaging EAN barcode</b> | 8015747041942        |

Part number

# CX 06 TF



Catalogue drawings



## Notes

Dimensions shown in mm are not binding and may be changed without notice.

### California Proposition 65 Information



### WARNING

This product can expose you to lead and its compounds, known to the State of California to cause cancer and/or reproductive toxicity. For more information go to [www.P65Warnings.ca.gov](http://www.P65Warnings.ca.gov).