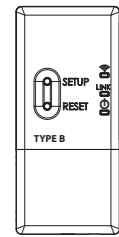


# TOSHIBA INSTALLATION MANUAL

Wireless adapter

Accessory part.

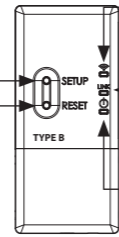


| No. | Part Name        | RB-N105S-G | RB-N106S-G |
|-----|------------------|------------|------------|
| ①   | Wireless adapter | 1          | 1          |
| ②   | Connection cable | -          | 1          |
| ③   | SCREW : M4X25    | *2         | *2         |
| ④   | SCREW : M4X12    | *1         | *1         |

\*The number of parts may differ by model.

SETUP button  
Initial connection  
to Wi-Fi router

RESET button  
For system reset



WIRELESS LED  
Show during A/C add  
step and sending  
signal to A/C

LINK LED  
Show during  
connecting process

POWER LED  
Show for  
Power On

“The Wireless adapter must be installed, maintained, repaired and removed by a qualified installer or qualified service person.”

“De Draadloze adapter moet worden geïnstalleerd, onderhouden, gerepareerd en verwijderd door een vakbekwame installateur of een vakbekwame servicemonteur.”

«Η εγκατάσταση, συντήρηση, επισκευή και αφαίρεση του Ασύρματου προσαρμογέα πρέπει να γίνεται από καταρτισμένο τεχνικό εγκατάστασης ή καταρτισμένο τεχνικό σέρβις.»

“L’adattatore wireless deve essere installato, sottoposto a manutenzione, riparato e rimosso da un installatore qualificato o da personale di assistenza qualificato.”

“El adaptador inalámbrico debe ser instalado, mantenido, reparado y retirado por un instalador cualificado o una persona de manenimiento cualificada.”

“Langattoman sovittimen asennus, huolto, korjaus ja poisto on annettava pätevän asentajan tai huoltohenkilön tehtäväksi.”

“Trådløs-adapteren må installeres, vedlikeholdes, repareres og fjernes av en kvalifisert installatør eller kvalifisert servicetekniker.”

“Der kabellose Adapter muss von einem qualifizierten Installateur oder einem qualifizierten Dienstleister installiert, gewartet, repariert oder ausgebaut werden.”

«L’adaptateur sans fil doit être installé, entretenu, réparé et retiré par un installateur qualifié ou un technicien qualifié.»

„Bezdrátový adaptér musí instalovat, udržovat, opravovat a odstraňovat kvalifikovaný technik nebo kvalifikovaný servisní pracovník.“

“Bežični adapter smiju instalirati, popravljati i demontirati samo kvalificirani instalateri ili serviseri.”

„A vezeték nélküli adapter felszerelését, karbantartását, javítását és leszerelését szakképzett klímászereknek vagy szakképzett karbantartási szakembernek kell végeznie.”

“Brezžični adapter mora namestiti, vzdrževati, popravljati ali odstraniti usposobljeni inštalater ali usposobljeni serviser.”

„Bezdrôtový adaptér je oprávnený nainštalovať, udržiavať, opravovať a odstraňovať len kvalifikovaný technik alebo kvalifikovaný servisný pracovník.“

“ต้องให้ช่างติดตั้งที่มีความชำนาญหรือผู้ให้บริการที่มีความชำนาญเป็นผู้ติดตั้ง บำรุงรักษา ซ่อมแซม และถอดอุปกรณ์รับส่งสัญญาณไว้สาย”

“Kablosuz bağıdırıcı, uzman bir tesisatçı ya da yetkili servis personeli tarafından kurulmalı, bakımı yapılmalı, onarılmalı ya da sökülmelidir.”

“무선 어댑터는 자격이 있는 설치 기사나 서비스 담당자가 설치, 유지 보수, 수리, 제거해야 합니다.”

“Bộ chuyển đổi không dây phải được lắp đặt, bảo dưỡng, sửa chữa và tháo dỡ bởi người có trình độ hoặc người có chuyên môn.”

「無線介面卡必須由合格的安裝人員或合格的維修人員進行安裝、維護、維修和移除。」

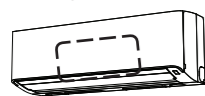
”Den trådlösa adaptern måste installeras, underhållas, repareras och tas bort av en kvalificerad installatör eller kvalificerad serviceperson.”

“Den trådløse adapter skal installeres, vedligeholdes, repareres og nedtages af en kvalificeret installatør eller servicetekniker.”

“Adapter sieci bezprzewodowej powinien być zainstalowany, konserwowany, naprawiany i zdemontowany przez wykwalifikowanego instalatora lub wykwalifikowanego serwisanta.”

Installation position (Inside AC unit)

High - Wall type A

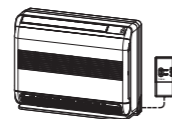


High - Wall type B

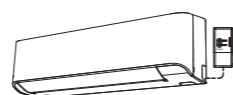


Installation position (Outside AC unit)

Console chassis



High - Wall type C

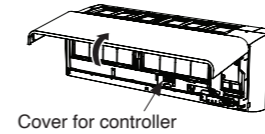


How to install Wireless adapter.

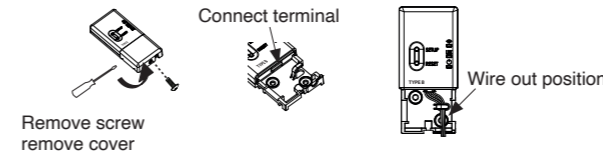
## Caution : Turn off power supply before installation

High - Wall type A (Inside AC unit)

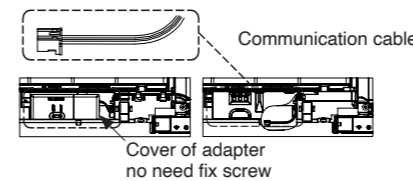
1. Open air inlet grille and cover for controller.



2. Open Wireless adapter for connect terminal.

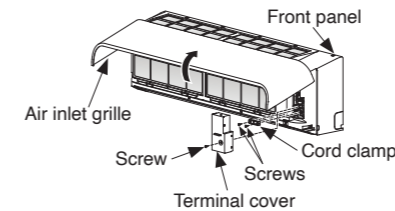


3. Open cover place the controller and connect communication cable from AC and close cover.

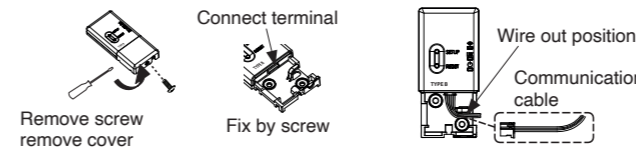


High - Wall type B (Inside AC unit)

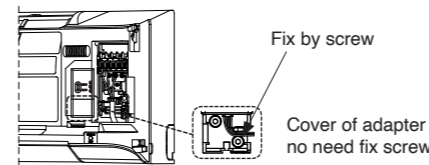
1. Open air inlet grille and terminal cover.



2. Open Wireless adapter for connect terminal.



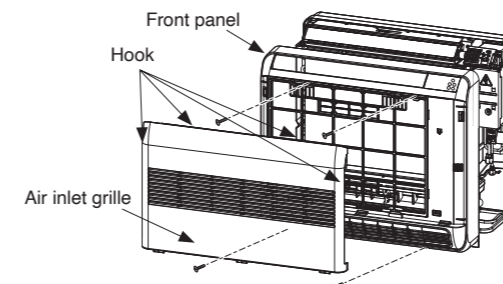
3. Place Wireless adapter to fixing position and connect communication cable from AC and close cover.



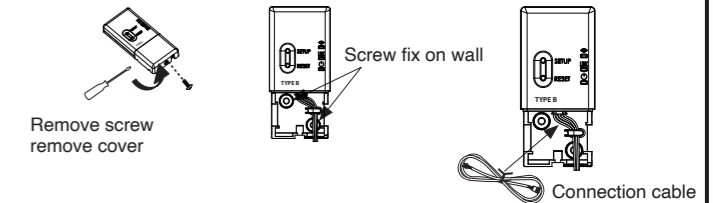
Console chassis (Outside AC unit)

1. Remove the air inlet grille. Open the air inlet grille and remove the strap.

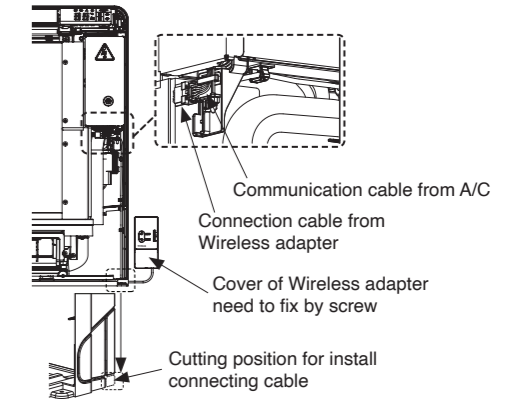
2. Remove the front panel (Remove 4 screws).



3. Open Wireless adapter for install on the wall and connect with Connection cable (accessory part)

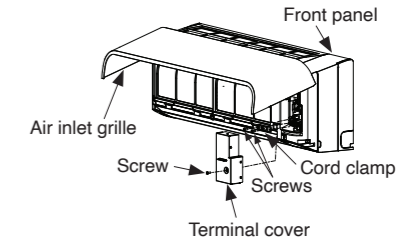


4. Insert lead wire in to unit and connect Wi-Fi terminal.

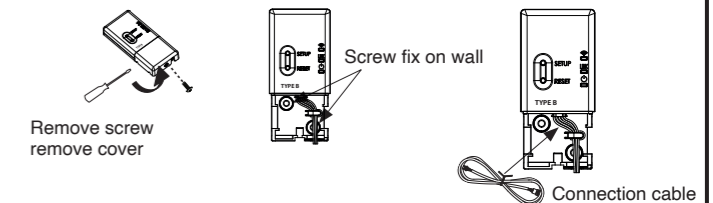


High - Wall type C (Outside AC unit)

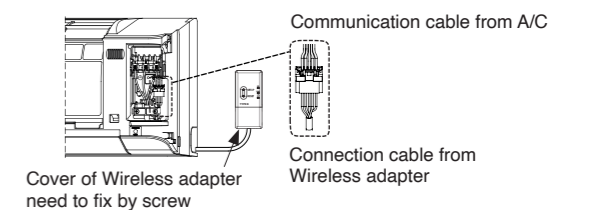
1. Open air inlet grille and terminal cover.



2. Open Wireless adapter for install on the wall and connect with Connection cable (accessory part)



3. Insert lead wire in to unit and connect Communication cable.

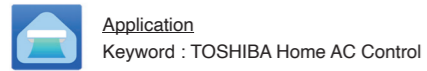


## Installation note

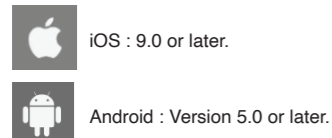
1. Do not install in a location where high humidity, high temperature and location that directly to sunlight and outside air.
2. Do not install nearby device that can produce electrical noise such as elevators, automatic door and industrial sawing machines.
3. Do not modify for any electrical part, it can cause for malfunction, electric shock or fire.
4. Install area should be covered by Wi-Fi signal from Router.
5. Wireless adapter compatible with router 2.4GHz band.

**TOSHIBA Home AC Control application preparation.**

1. Please visit the application store on your device to download and install TOSHIBA Home AC Control application.



Note : TOSHIBA Home AC Control application will support with



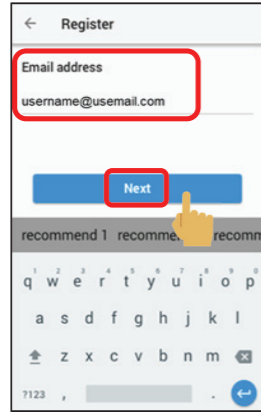
And support both phone and tablet.

2. After finished installing, Open an application and tab register for User registration.

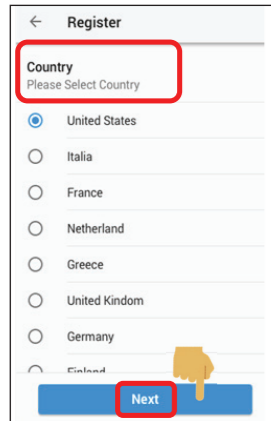
Maximum TOSHIBA Home AC Control per user account is 10.



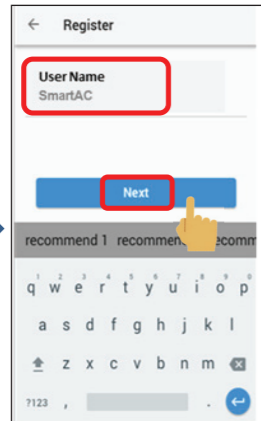
① Tab Register



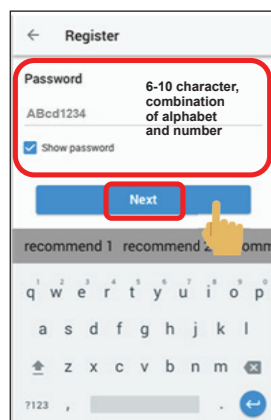
② Enter Email address then tab Next



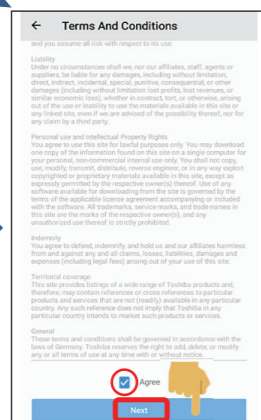
③ Select your country then tab Next



④ Enter user name and tab Next



⑤ Enter Password then tab Next



⑥ Check I agree with Term and condition then tab Next

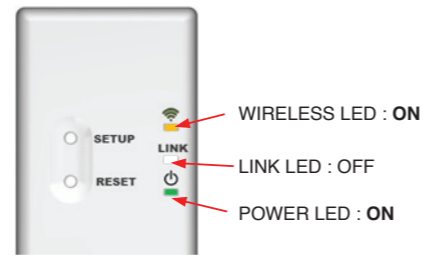


⑦ Confirm details then tab Register.

⑧ Information will be submitted to email, click link to confirm

**How to connect TOSHIBA Home AC Control.**

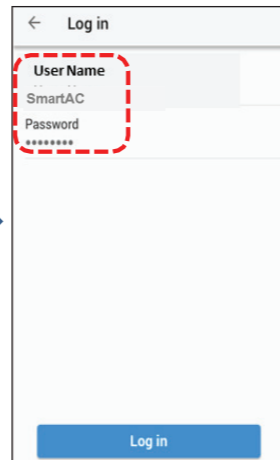
1. Turn on power supply to Air conditioner system.
2. Check LED on the Wireless adapter.



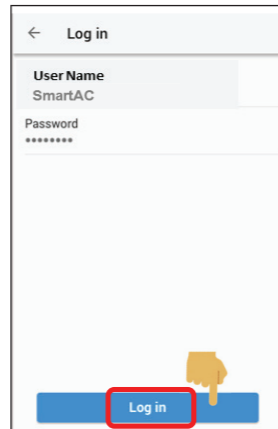
3. Go to application and tab log in for log in to your user.



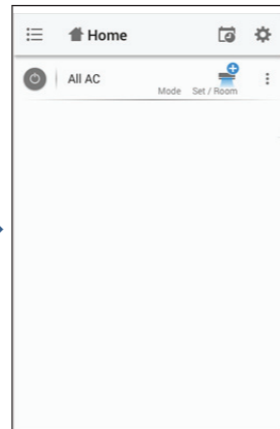
① Tab log in



② Enter User Name and Password



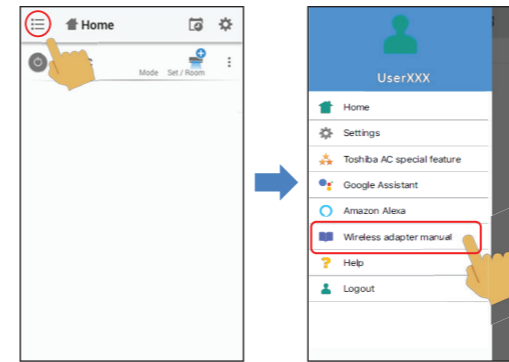
③ Tab log in



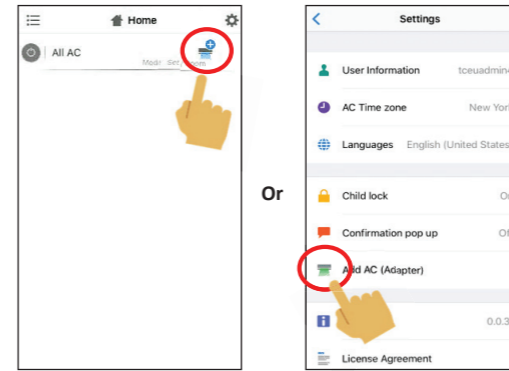
④ Log in successful

**How to connect TOSHIBA Home AC Control. (Cont.)**

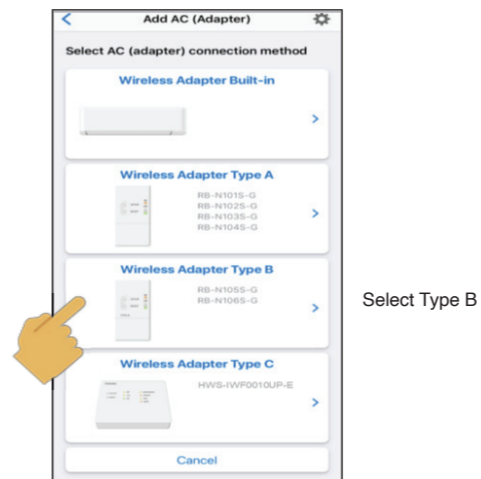
4. Support information with multi language need to register before.



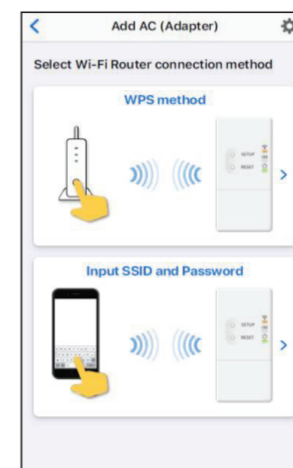
5. To add Wireless adapter, Please select Add AC (Adapter) from below display.



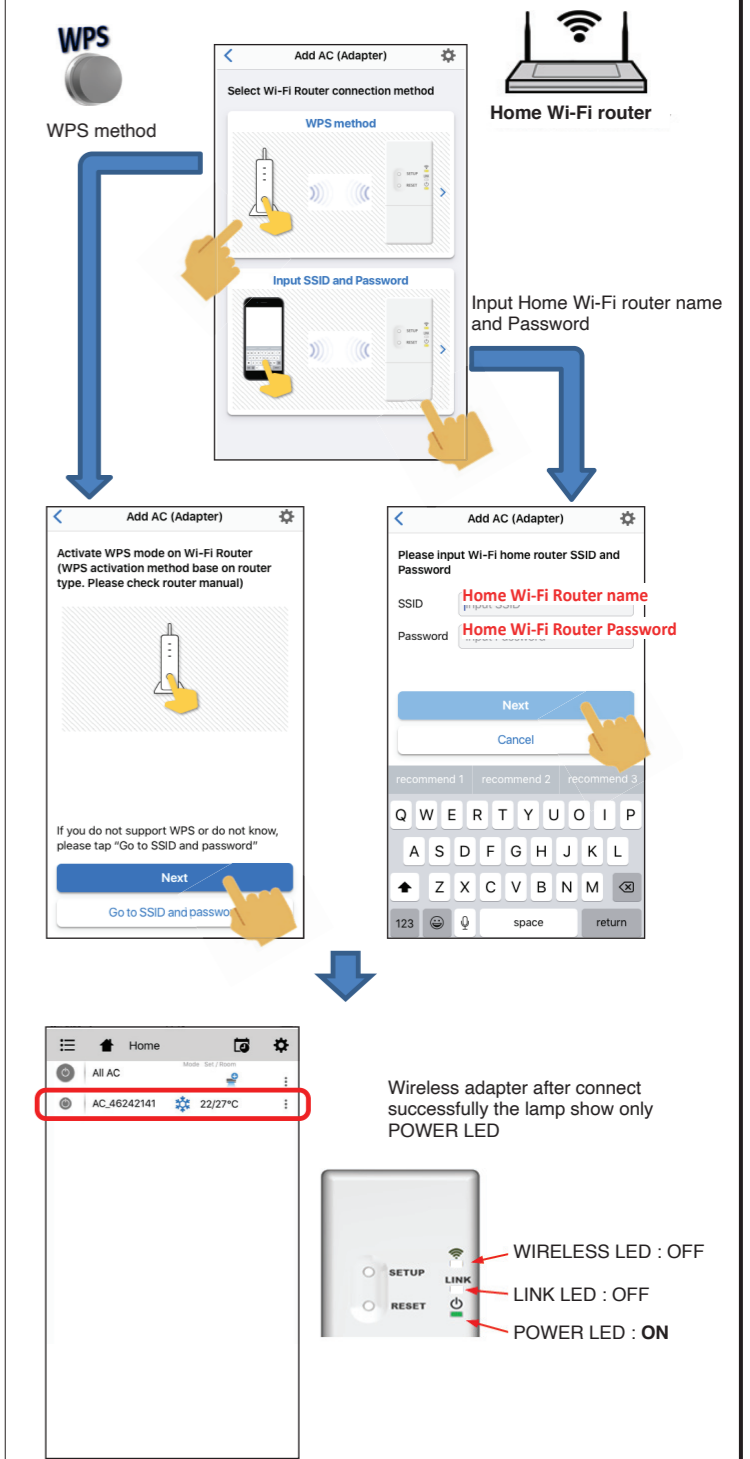
6. After select Add AC display will go to Select AC (adapter) connection method can select the way for connect.



Select Type B



7. Connect Wireless adapter to Home Wi-Fi router.



8. For add more Wireless adapter please repeat step no. 5 to 7.  
Note : In case of cannot connect please check error by table below.

| Error detail                                       | Adapter LED |           |           |
|--|-------------|-----------|-----------|
|  | Wi-Fi       | LINK      | Power     |
| Adapter ⇄ Wi-Fi router communication error         | Flash 5Hz   | OFF       | Flash 5Hz |
| Adapter ⇄ Cloud communication error                | Flash 5Hz   | OFF       | ON        |
| Adapter ⇄ FCU communication error                  | Flash 5Hz   | Flash 5Hz | ON        |
| MAC address or SSID or Password or GUID no setting | Flash 5Hz   | Flash 5Hz | Flash 5Hz |