

- | | | | |
|---------------|---------------|---------------|--------------|
| TM-1-8210... | TM-2-8211... | TM-3-8212... | TM-4-8213... |
| TM-1-8214... | TM-2-8215... | TM-3-8216... | TM-4-8223... |
| TM-1-8218... | TM-2-8219... | TM-3-8222... | TM-4-8294... |
| TM-1-8220... | TM-2-8221... | TM-3-8299... | |
| TM-1-8290... | TM-2-8292... | TM-3-8326... | TM-5-8369... |
| TM-1-8291... | TM-2-8293... | TM-3-15433... | |
| TM-1-8310... | TM-2-8311... | | TM-6-8370... |
| TM-1-15431... | TM-2-15432... | | |

(en) Electric current! Danger to life!
 Only skilled or instructed persons may carry out the following operations.

(de) Lebensgefahr durch elektrischen Strom!
 Nur Elektrofachkräfte und elektrotechnisch unterwiesene Personen dürfen die im Folgenden beschriebenen Arbeiten ausführen.

(fr) Tension électrique dangereuse !
 Seules les personnes qualifiées et averties doivent exécuter les travaux ci-après.

(es) ¡Corriente eléctrica! ¡Peligro de muerte!
 El trabajo a continuación descrito debe ser realizado por personas cualificadas y advertidas.

(it) Tensione elettrica: Pericolo di morte!
 Solo persone abilitate e qualificate possono eseguire le operazioni di seguito riportate.

(zh) 触电危险!
 只允许专业人员和受过专业训练的人员进行下列工作。

(ru) Электрический ток! Опасно для жизни!
 Только специалисты или проинструктированные лица могут выполнять следующие операции.

UL60947-4-1, UL508

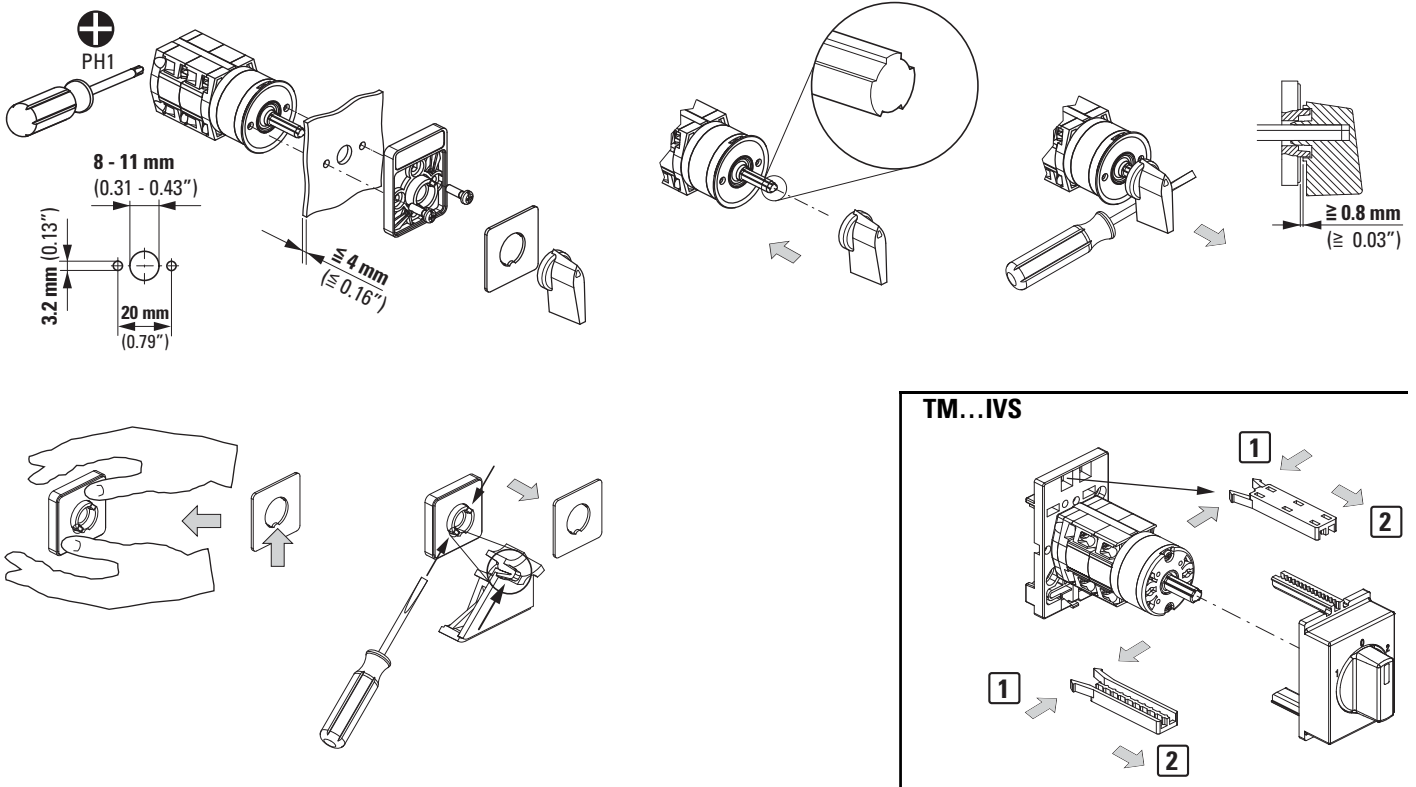
Temperature rating of wire Range of temperature (°C)
 60 - 75

GENERAL

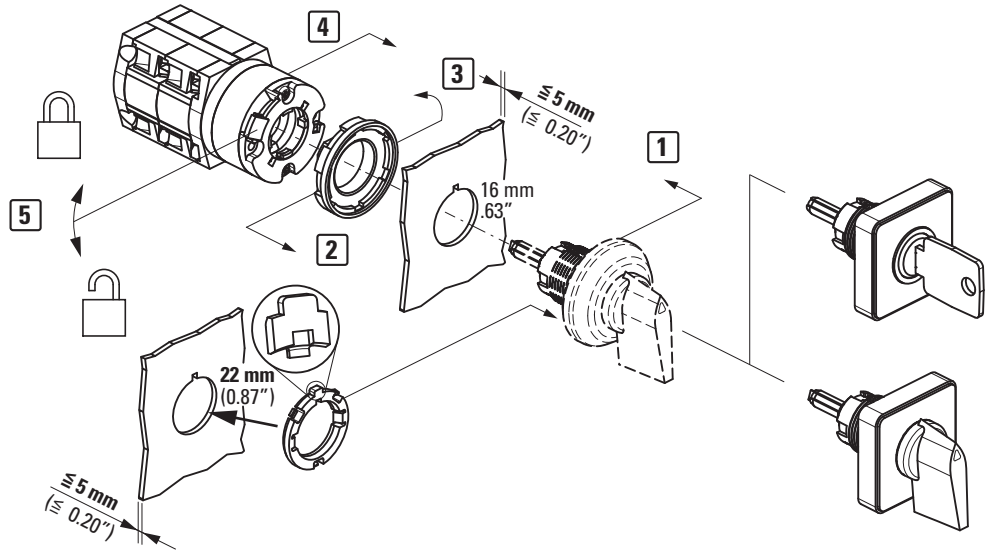
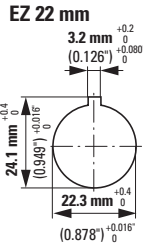
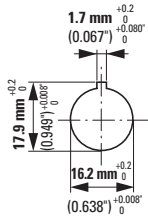
Terminal screw torque	tightening torque (Nm)	tightening torque (lb-in)
	0,4	3,5
General information	Use copper wire, only.	

	TM	6 mm (0.23")	
TM...			tightening torque
	1 x 1.0 mm ² 2 x 1.0 mm ²		0.4 Nm (3.5 lb-in)
	1 x 1.5 mm ² 2 x 1.5 mm ²		
	AWG14		

TM...E



EZ 16 mm



TM...

- en** On-Off switches
- de** Ein-Aus-Schalter
- fr** Commutateurs Marche-Arrêt
- es** Interruptores On-Off
- it** Interruttori On-Off
- zh** 打开 - 关闭开关
- ru** Выключатели вкл./выкл.



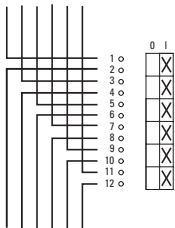
FS 056-TM-..



TM-3-8326



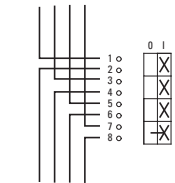
FS 056-TM-..



TM-2-8293



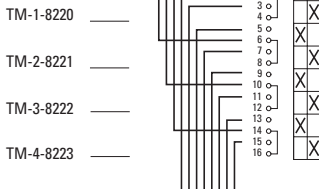
FS 056-TM-..



- en** Change over switches
- de** Umschalter
- fr** Commutateurs de sélection
- es** Contactos conmutados
- it** Commutatori
- zh** 转向开关
- ru** Переключатели



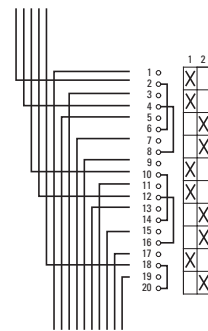
FS 072-TM-..



TM-5-8369



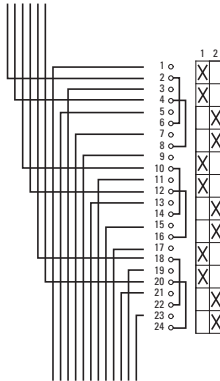
FS 072-TM-..



TM-6-8370



FS 072-TM-..



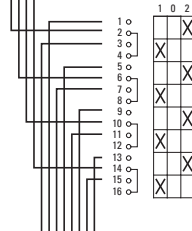
FS 071-TM-..

TM-1-8210
TM-1-15431

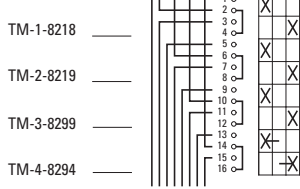
TM-2-8211
TM-2-15432

TM-3-8212
TM-3-15433

TM-4-8213



FS 057-TM-..

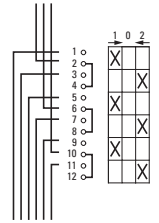


FS 025-TM-..

TM-1-8214

TM-2-8215

TM-3-8216

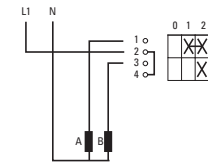


- en** Control switches
- de** Steuerschalter
- fr** Commutateurs de commande
- es** Conmutadores de maniobra
- it** Commutatori di controllo
- zh** 控制开关
- ru** Управляющие выключатели

TM-1-8310



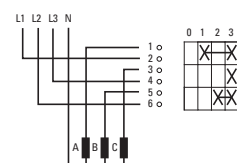
FS 075-TM-..



TM-2-8311



FS 001-TM-..



04/18 IL03801025Z

