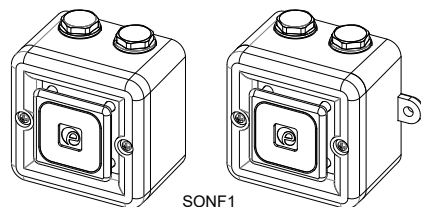


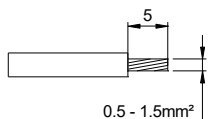
- Type 3R / 13, IP66
- -40°C to +55°C (-40°F to +131°F)
- 0.30Kg (0.66lbs)
- CE, EAC & Russian Maritime Register Approved
- UL / cULus Approved for General Signalling
- VdS Approved (24vdc Only)
- MED Approved (24vdc Only)



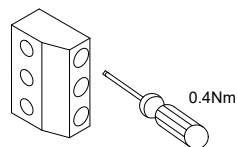
Note: MED Version not available with UL/ cULus Approval

| Model No. | Nominal Voltage | Voltage Range | Nominal Current | Sound Pressure Level dB(A) | |
|---------------------|-----------------|---------------|-----------------|----------------------------|------------------------|
| | | | | Max | Nominal |
| SONF1DC024[X]...[Y] | 24V dc | 10-30V dc | 25mA* | | |
| SONF1AC024[X]...[Y] | 24V ac 50/60Hz | +/- 10% | 40mA | 100.0 @ 1m 91.0 @ 3m | 99.0 @ 1m 90.0 @ 3m |
| SONF1AC115[X]...[Y] | 115V ac 50/60Hz | +/- 10% | 27mA | | |
| SONF1AC230[X]...[Y] | 230V ac 50/60Hz | +/- 10% | 39mA | | |

*Current at nominal voltage on Tone 2
[X] Denotes Backbox Type: S = Sonora; M = Multi (with Lugs)
[Y] Denotes Housing Colour: R = Red; G = Grey; W = White



Use suitable conduit or cable glands with suitable IP or type rating



Terminal Connections

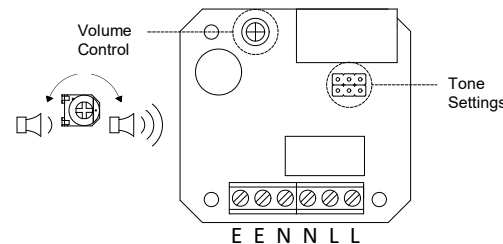


Attention: Installation must be carried out by an electrician in compliance with the latest codes and regulations.
Attention: L'installation doit être effectuée par un électricien conformément aux derniers codes et réglementations.
Achtung: Die Installation muss von einem Elektriker gemäß den neuesten Vorschriften und Bestimmungen durchgeführt werden.
Attenzione: L'installazione deve essere eseguita da un elettricista in conformità con i codici e le normative più recenti.
Atención: La instalación debe ser realizada por un electricista de acuerdo con los últimos códigos y regulaciones.
Atenção: A instalação deve ser realizada por um eletricitista de acordo com os códigos e regulamentos mais recentes.
Внимание: установка должна выполняться электриком в соответствии с последними нормами и правилами.

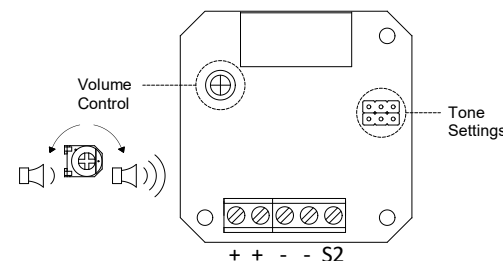


Attention: Disconnect from power source before installation or service to prevent electric shock
Attention: Débranchez-le de la source d'alimentation avant l'installation ou l'entretien pour éviter tout choc électrique.
Achtung: Vor Installation oder Wartung von der Stromquelle trennen, um einen Stromschlag zu vermeiden.
Attenzione: scollegare dall'alimentazione prima dell'installazione o dell'assistenza per evitare scosse elettriche.
Atención: desconéctelo de la fuente de alimentación antes de la instalación o el servicio para evitar descargas eléctricas.
Atenção: Desconecte da fonte de alimentação antes da instalação ou serviço para evitar choque elétrico
Внимание: отключите от источника питания перед установкой или обслуживанием, чтобы предотвратить поражение электрическим током.

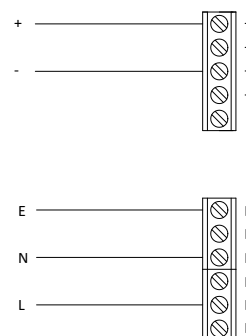
AC See D242-06-001



DC See D242-06-001

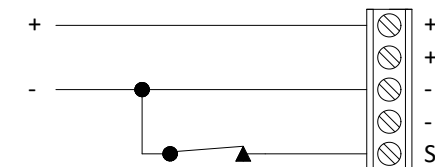


AC & DC Single Stage Operation



DC Two Stage Operation

Stage 1: Apply power +ve and -ve
Stage 2: Apply power +ve and -ve and connect S2 to -ve



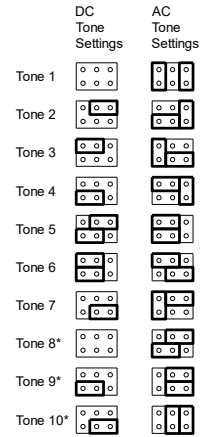
Note: Stage 2 is not VdS Approved

115V AC and 230V AC Tone Table

| Stage 1 | Tone Description | | |
|---------|---|--------------|--|
| 1 | 800/1000 Hz @ 0.25 sec Alternating BS5839 Alarm Tone | 99dB(A) @1m | |
| 2 | 500/1200 Hz @ 0.3 Hz 0.5 sec Slow Whoop NEN 2575:2000 | 100dB(A) @1m | |
| 3 | Sawtooth 1200/500 Hz @ 1 Hz - DIN / PFEER P.T.A.P | 99dB(A) @1m | |
| 4 | 544Hz (100mS)/440 Hz (400mS) AFNOR NF S 32-001 | 97dB(A) @1m | |
| 5 | Continuous 1000 Hz - PFEER toxic gas | 100dB(A) @1m | |
| 6 | Simulated Bell Sound | 95dB(A) @1m | |
| 7 | 800/1000 Hz @ 7 Hz Sweeping | 99dB(A) @1m | |
| 8 | 2400/2900 Hz 50 Hz Sweeping | 100dB(A) @1m | |
| 9 | 420 Hz @ 0.625 sec Australian Alert | 97dB(A) @1m | |
| 10 | 500-1200 Hz 3.75 sec / 0.25 sec Australian Evacuation | 100dB(A) @1m | |

24V DC Tone Table

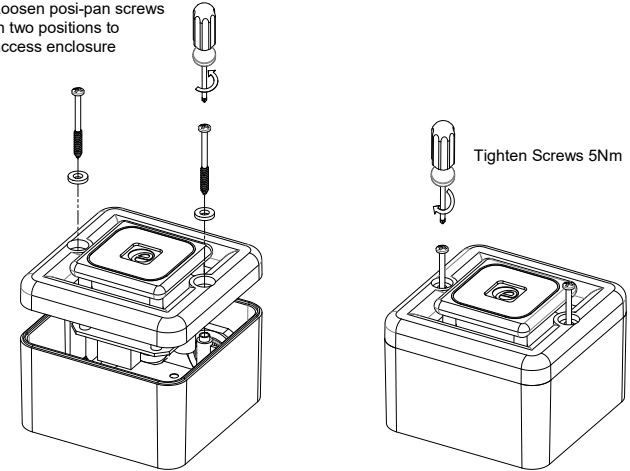
| Stage 1 | Tone Description | SONF1 dB@ 1m | | Stage 2 |
|---------|---|--------------|--|---------|
| 1 | 800/1000 Hz @ 0.25 sec Alternating BS5839 Alarm Tone | 99dB(A) @1m | | 8 |
| 2 | 500/1200 Hz @ 0.3 Hz 0.5 sec Slow Whoop NEN 2575:2000 | 100dB(A) @1m | | 1 |
| 3 | Sawtooth 1200/500 Hz @ 1 Hz - DIN / PFEER P.T.A.P | 99dB(A) @1m | | 8 |
| 4 | 544Hz (100mS)/440 Hz (400mS) AFNOR NF S 32-001 | 97dB(A) @1m | | 9 |
| 5 | Simulated Bell Sound | 95dB(A) @1m | | 1 |
| 6 | Sweeping 800/1000 Hz @ 7 Hz Sweeping | 99dB(A) @1m | | 8 |
| 7 | 500-1200 Hz 3.75 sec / 0.25 sec Australian Evacuation | 100dB(A) @1m | | 10 |
| 8 | Continuous 1000 Hz - PFEER toxic gas | 100dB(A) @1m | | - |
| 9 | Continuous 554 Hz | 97dB(A) @1m | | - |
| 10 | 420 Hz @ 0.625 sec Australian Alert | 97dB(A) @1m | | - |



*To set tones 8, 9 & 10 as first stage on DC, connect terminal 'S2' to '-' terminal

Access to Enclosure

Loosen posi-pan screws in two positions to access enclosure



Open

Close

VdS / CPR
Tone Table

SONF1 24vdc (18-30vdc) unit is CPR compliant
EN54-3 Type B IP55

The tones listed below have been tested to EN54-3
and are compliant with the Construction Products
Regulation 305/2011.

EN54-3 test data: Document D0665

| Stage 1 | Tone Description | SONF1 dB@ 1m | |
|---------|---|--------------|--|
| 1 | 800/1000 Hz @ 0.25 sec Alternating BS5839 Alarm Tone | 99dB(A) @1m | |
| 2 | 500/1200 Hz @ 0.3 Hz 0.5 sec Slow Whoop NEN 2575:2000 | 100dB(A) @1m | |
| 3 | Sawtooth 1200/500 Hz @ 1 Hz - DIN / PFEER P.T.A.P | 99dB(A) @1m | |
| 4 | 544Hz (100mS)/440 Hz (400mS) AFNOR NF S 32-001 | 97dB(A) @1m | |
| 8 | Continuous 1000 Hz - PFEER toxic gas | 100dB(A) @1m | |
| 9 | Continuous 554 Hz | 97dB(A) @1m | |

Mounting Positions

See D242-05-001

