


## JUDY 029



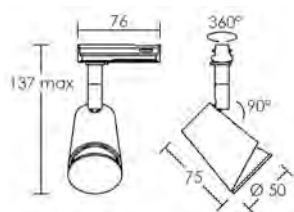
Corps polycarbonate blanc. Montage sur rail 1 allumage. Lampe LED dimmable fournie.

QPAR 16  GU10 4,5W

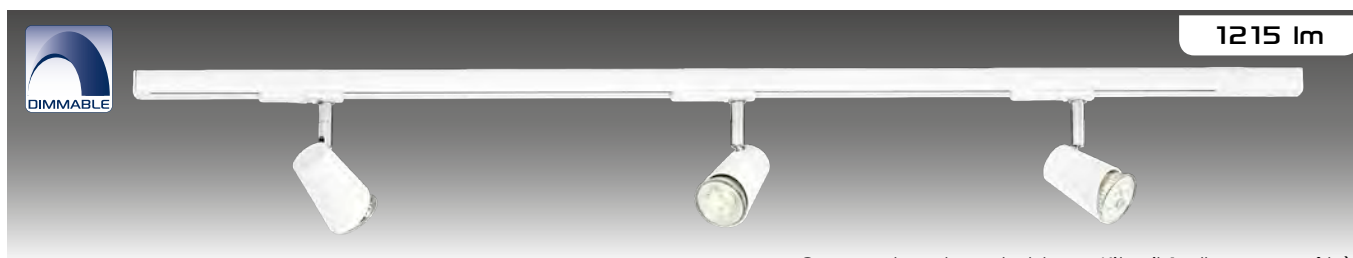
 230V IP20 IK02 850°C

Fixation	Lumens	Teinte	Code avec lampe LED
----------	--------	--------	---------------------


 rail 1 allum. (p.483)	405	 3000 K	<b>4149</b>
---	-----	--	-------------



### KIT JUDY 1



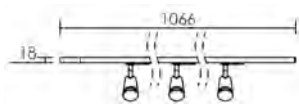
Corps polycarbonate blanc. Kit rail 1 allumage prêt-à-poser. Longueur 1 m, 3 spots. Lampes LED dimmables fournies.

QPAR 16  GU10 3x 4,5W

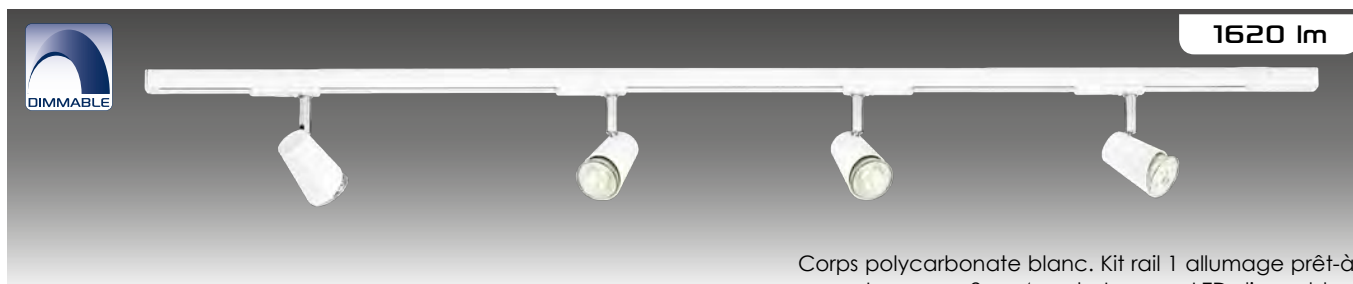
 230V IP20 IK02 850°C

Fixation	Lumens	Teinte	Code avec lampe LED
----------	--------	--------	---------------------


 rail 1 allum. monophasé NOKIA 1 L = 1 m	3x 405	 3000 K	<b>4157</b>
---	--------	--	-------------



### KIT JUDY 2




Corps polycarbonate blanc. Kit rail 1 allumage prêt-à-poser. Longueur 2 m, 4 spots. Lampes LED dimmables fournies.

QPAR 16  GU10 4x 4,5W

 230V IP20 IK02 850°C

Fixation	Lumens	Teinte	Code avec lampe LED
----------	--------	--------	---------------------

 2 rails 1 allum. monophasé NOKIA 1 L = 2 m	4x 405	 3000 K	<b>4158</b>
--	--------	--	-------------

