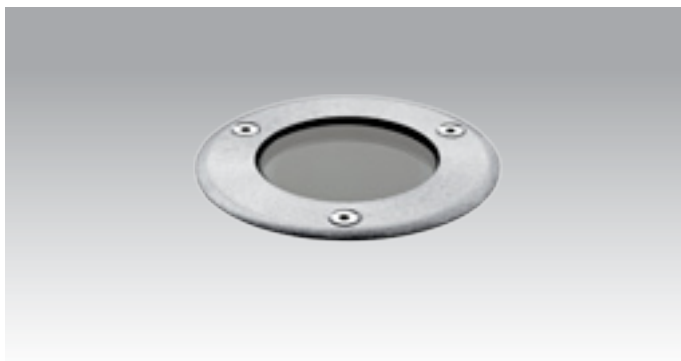
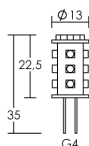
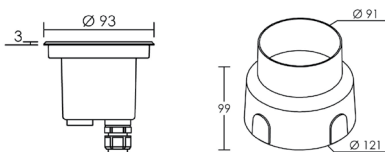


AQUASOL MICRO



Corps aluminium/Colerette inox 304. Boîte d'encastrement. Pré-cablage HO5RNF - 2x 1 mm² - 1,5 m. 1 presse-étoupe. Température contact : MR16 115°C - LED 30°C. Autorisé dans le volume 1 des piscines.

	QR-CB 35 (MR11)	G4	20W
	12V	IP67	IK10 650°
			1000 kg
Colerette		Code sans lampe	
inox		4630	



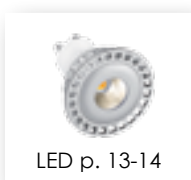
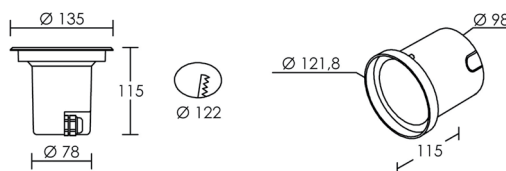
	15 LED	12V AC/DC	25 000 h
P (w)	Culot	Lumens	Teinte
1	G4	75	3000 K
1	G4	105	4000 K
		Code	
		2566	
		2567	

AQUASOL MINI R



Corps aluminium/Colerette inox 304. Boîte d'encastrement. Pré-cablage HO5RNF - 2x 1 mm² - 1,5 m. 1 presse-étoupe. Température contact : halogène 100°C - LED 35°C.

	QR-CB 51 (MR16)	GU5,3	35W
	12V	IP67	IK10 650°
			2000 kg
Colerette		Code sans lampe	
inox		4666	



Pré-cablage HO5RNF - 3x 1 mm² - 1,5 m.

	QPAR 16 (HI50)	GU10	35W
	230V	IP67	IK10 650°
Colerette		Code sans lampe	
inox		4648	



ENCASTRÉ SOL