



Mushroom-head pushbutton



Emergency-Stop pushbutton

Technical data

Mushroom-head pushbutton (Emergency stop and normal version)

	Complete certificate <sup>1)</sup>	Component certificate
Marking accd. to 2014/34/EU	II 2 G Ex de IIC T6	II 2 G Ex de IIC/IIB Gb I M2 Ex de I Mb
EC-Type Examination Certificate	PTB 99 ATEX 1034	IBExU 14 ATEX 1030 U
IECEX Certificate of Conformity		IECEX IBE 14.0005 U
Marking accd. to IECEx		Ex de IIC/IIB Gb Ex de I Mb
Operating temperature range	-55°C up to + 80 °C	-45 °C up to +80 °C (IIC) -60 °C up to +80 °C (IIB)
Permissible ambient temperature	-25 °C up to + 50 °C	
Application temperature <sup>2)</sup>		-45 °C up to +55 °C (IIC) -60 °C up to +55 °C (IIB)
Rated voltage	400 V AC	500 V AC
Rated current	16 A	16 A
Rated current with gold contact points	0.4 A	0.4 A
Rated making-/rated breaking capacity accd. EN 60947-5-1	AC-15: U <sub>b</sub> 250 V / I <sub>b</sub> 6 A U <sub>b</sub> 400 V / I <sub>b</sub> 4 A DC-13: U <sub>b</sub> 24 V / I <sub>b</sub> 6 A U <sub>b</sub> 220 V / I <sub>b</sub> 1 A	AC-15: U <sub>b</sub> 250 V / I <sub>b</sub> 6 A U <sub>b</sub> 500 V / I <sub>b</sub> 4 A DC-13: U <sub>b</sub> 24 V / I <sub>b</sub> 6 A U <sub>b</sub> 220 V / I <sub>b</sub> 1 A
Connecting terminals	2 x 2.5 mm <sup>2</sup>	2 x 2.5 mm <sup>2</sup>
Degree of protection accd. to EN 60529	IP661)	IP00
Dimensions (L x W x H)	approx. 156 x 38 x 67 mm	approx. 139 x 38 x 57 mm
Weight	0.30 kg	0.25 kg
Cable gland	M25x1.5 Ø 6 - 15 mm	--
Type of mounting	Ø 30.3 mm fixing hole	Ø 30.3 mm fixing hole
Enclosure colour	grey	grey
Gasket material	Neoprene (standard), Fluoric Silicone or Viton on request	

<sup>1)</sup> with protective cover IP66

<sup>2)</sup> The limits of the operating temperature range and the max. permissible temperature rise of the components have to be taken into account. See also pages 2.4.34/35.

## Ex-mushroom-head pushbutton for panel mounting



Emergency-Stop pushbutton

Mushroom-head pushbutton

### 4 Ordering code for components Code A - B - C - D - E

Code            A            B            C    D    E  
 Order No.     GHG 418 815 \_ R    \_    \_    \_

Code	Component	Code			
A	Mushroom-head pushbutton	GHG 418 815			
Code	Circuit	Contacts manual	Code key released	silver contact points	gold contact points
B	2 NC			3	6
	2 NO			4	7
	1 NO + 1 NC			5	8
Code	Mushroom-head pushbutton inscription and colour				Code
C	emergency stop EMERGENCY STOP (German - English) <sup>1)</sup>				1
	emergency stop ARRET D'URGENCE (German - French) <sup>1)</sup>				4
	red				1
	yellow <sup>1)</sup>				2
	black <sup>2)</sup>				3
Code	released	engaged	unlocking	Code	
D	not lockable	not lockable	n/a (pushbutton function)	1 <sup>2)</sup>	
	not lockable	lockable	hand released	2 <sup>1)</sup>	
	not lockable	lockable	key released	3 <sup>1)</sup>	
Code	Inscription (label)	Code	Inscription	Code	
E	0, I, Start, Stop	01	0	02	
	I	03	II	04	
		05	STOP	06	
	START	07	NOT-AUS1)	00	

<sup>1)</sup> only emergency stop mushroom head pushbutton

<sup>2)</sup> only mushroom-head pushbutton normal version



Mushroom-head pushbutton



Emergency-Stop pushbutton

Example for order No.

Contact system	Pushbutton colour	Inscription	Order No.				
			A	B	C	D	E
<b>EMERGENCY STOP mushroom-head pushbutton red, with silver contact points, without protective cover</b>							
<b>content with inscription D/E, hand released</b>							
2 NC	red	German/English	GHG 418 815 3	R 1	2	00	
2 NC	red	German/French	GHG 418 815 3	R 4	2	00	
2 NO	red	German/English	GHG 418 815 4	R 1	2	00	
2 NO	red	German/French	GHG 418 815 4	R 4	2	00	
1 NO + 1 NC	red	German/English	GHG 418 815 5	R 1	2	00	
1 NO + 1 NC	red	German/French	GHG 418 815 5	R 4	2	00	
<b>Version with inscription D/E, key released</b>							
2 NC	red	German/English	GHG 418 815 3	R 1	3	00	
2 NC	red	German/French	GHG 418 815 3	R 4	3	00	
2 NO	red	German/English	GHG 418 815 4	R 1	3	00	
2 NO	red	German/French	GHG 418 815 4	R 4	3	00	
1 NO + 1 NC	red	German/English	GHG 418 815 5	R 1	3	00	
1 NO + 1 NC	red	German/French	GHG 418 815 5	R 4	3	00	
<b>Mushroom-head pushbutton, with silver contact points, without protective cover</b>							
<b>version with inscription D/E, pushbutton function only</b>							
2 NC	black	0, I, START, STOP	GHG 418 815 3	R 3	1	01	
2 NC	yellow	0, I, START, STOP	GHG 418 815 3	R 2	1	01	
2 NO	black	0, I, START, STOP	GHG 418 815 4	R 3	1	01	
2 NO	yellow	0, I, START, STOP	GHG 418 815 4	R 2	1	01	
1 NO + 1 NC	black	0, I, START, STOP	GHG 418 815 5	R 3	1	01	
1 NO + 1 NC	yellow	0, I, START, STOP	GHG 418 815 5	R 2	1	01	

Accessories

Type	OU	Order No.
Protective cover to meet IP66	5	GHG 410 1939 R0002

Please pay attention that only order units (OU) according to the ordering details can be delivered.

## Ex-mushroom-head pushbutton for panel mounting



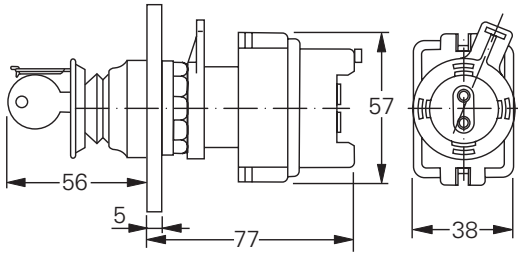
Mushroom-head pushbutton



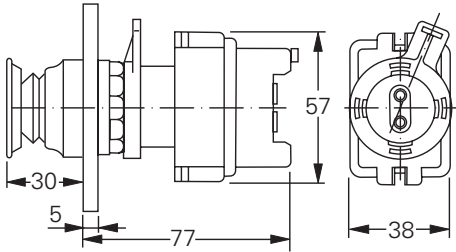
Mushroom-head pushbutton

4

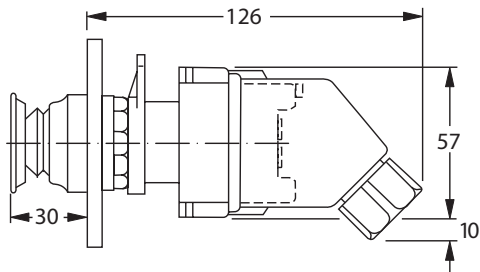
### Dimension drawing



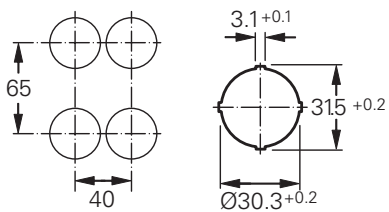
Mushroom-head pushbutton without protective cover with key release



Mushroom-head pushbutton without protective cover



Mushroom-head pushbutton with protective cover



Minimum distances

Dimensions in mm