



Photo



Descriptions

Part to attach a duct to take in fresh air from outdoors.

Applicable Models

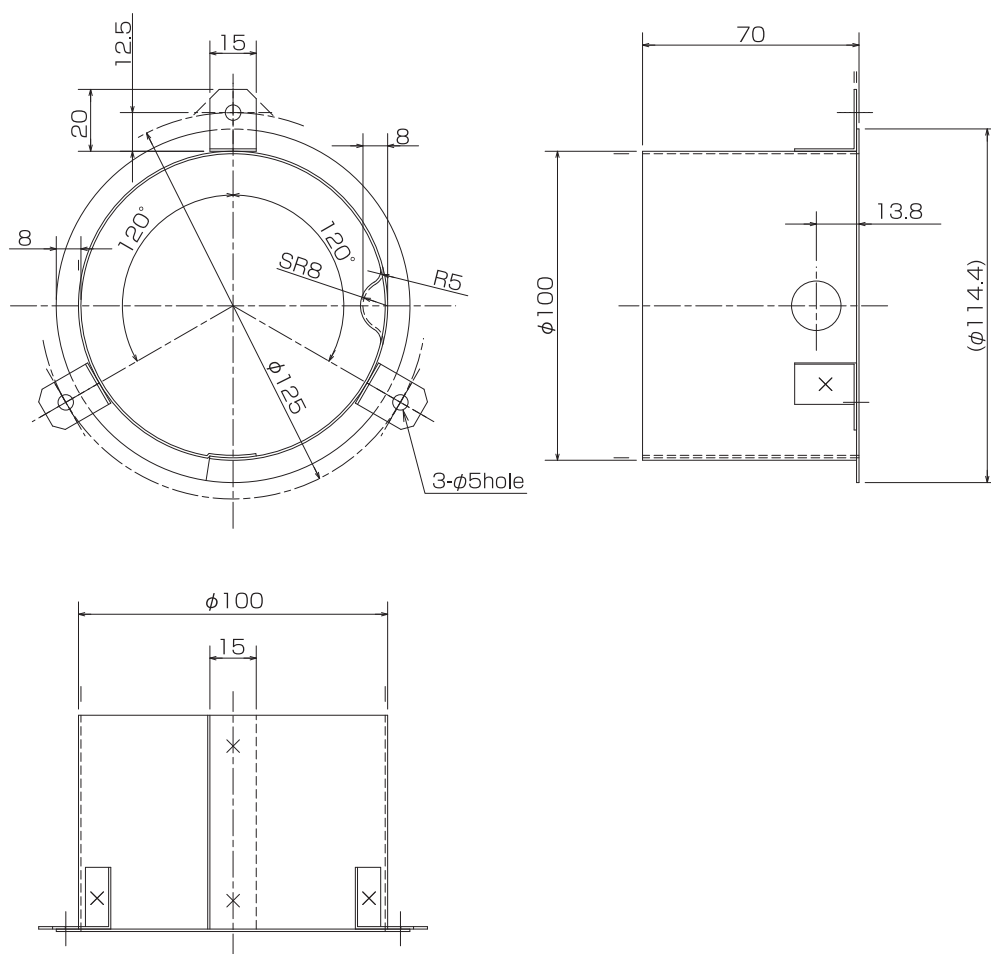
- PLA-ZM·EA series
- PLA-M·EA series
- PLA-SM·EA series

Specifications

Connection duct diameter (mm)	φ100
Material	Hot-dip zinc-coated carbon steel sheet (t0.8)
Accessory	Insulator, Fixing screw (ST4x10)x3

Dimensions




Unit : mm



OPTIONAL
PARTS

INDOOR UNIT

(This box contains the installation manual and the following parts)

Part	①Duct flange	②Insulator	③Screws(M4×10)
Qty	1	1	3
Shape			

1) Punch an opening for the duct flange.

<When attaching to main unit>

- Cut the slit of the $\phi 100$ cut-out hole to which the duct flange is to be attached.

<When attaching to Multi-functional casement>

- Remove the $\varnothing 100$ knockout hole to which the duct flange is to be attached.

2) Paste insulator ② on the duct flange ① (see the figure on the right).

3) Use 3 screws ③ to attach duct flange ① (see the figure below).

Note:

1. When attaching to the main unit, **be sure to remove the insulator** that is pasted on the location of main unit (shown in the figure below).

2. When attaching to Multi-functional casement, be sure to **set the concave portion of duct flange ① toward the grille attachment surface when attaching it.** (If the duct flange is attached to a location other than the specified one, the grille cannot be attached.)

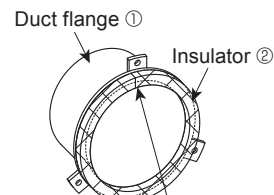
3. When external air is input directly through the main unit, intake-air volume should be 5% or less of indoor unit air volume.

4. When external air is input through the Multi-functional casement, intake-air volume should be 20% or less of indoor unit air volume.

5. To input the external air, the duct fan and dust collecting filter to prevent drawing in dust and other particles are necessary.

For details, see "Fresh air intake volume & static pressure characteristics" in the P series DATA BOOK.

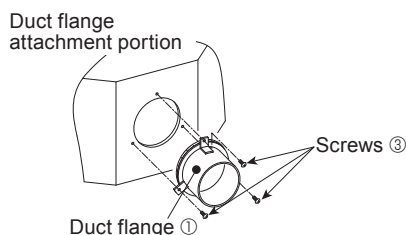
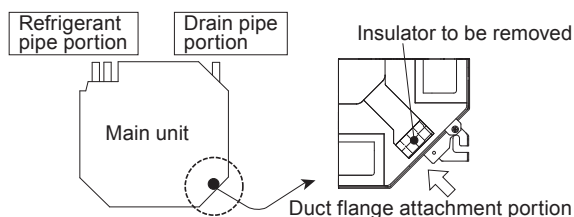
6. When external air is input into the main unit, the operation noise can be larger.



Paste insulator ② so that there is no gap at joints.

When attaching to main unit

- For the E type 4-way cassette (PLA-ZM・EA, PLA-M・EA, PLA-SM・EA)



When attaching to Multi-functional casement

