

RAV & RAVL ADAPTER

ENGINEERING
TOMORROW

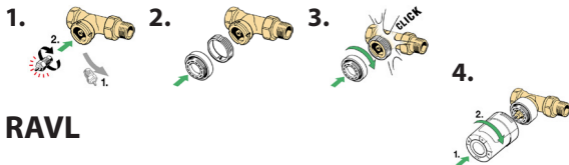


014G0248 / 014G0249

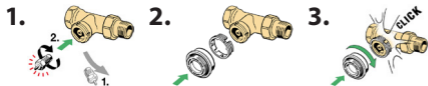
Danfoss Ally™

Danfoss Eco™

RAV

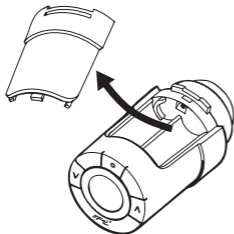


RAVL



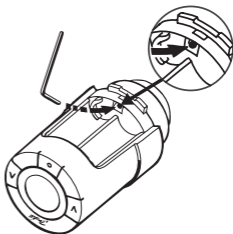
How to remove a pre-mounted adapter

1.



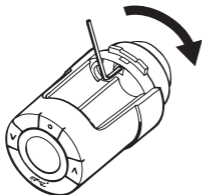
Remove the battery cover.

2.



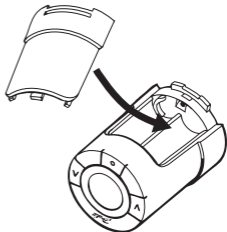
Insert a small hex key or similar into the locking hole.

3.



With the hex key locking the adapter ring, turn the adapter in the shown direction.

4.



Put back the battery cover and mount the *living* thermostat.