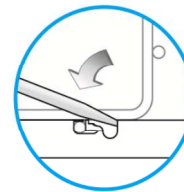
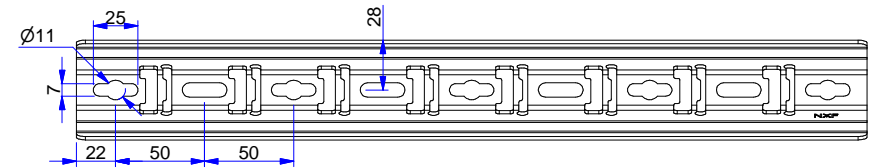
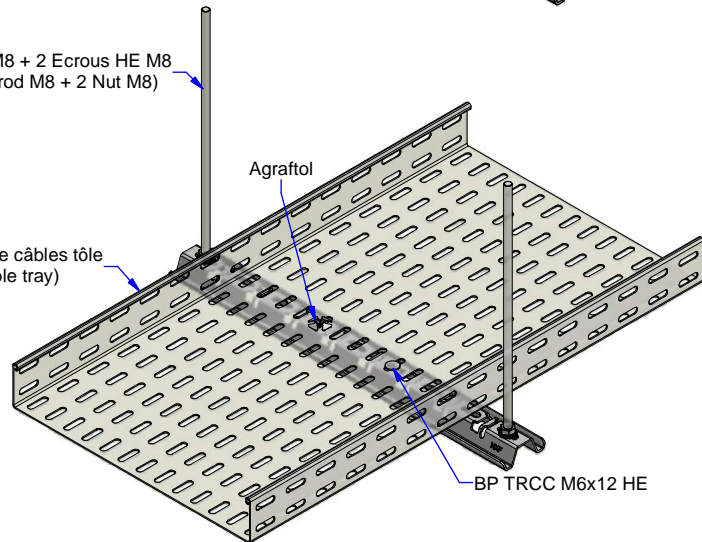


Tige filetée M8 + 2 Ecrous HE M8
(Threaded rod M8 + 2 Nut M8)

Agrafitol

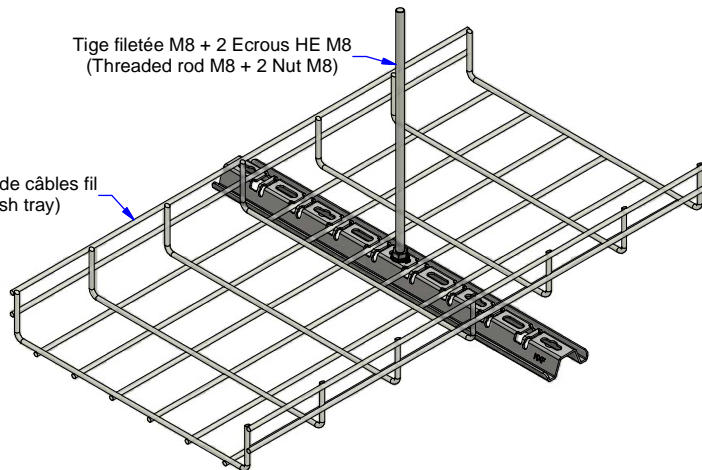
Chemin de câbles tôle
(Cable tray)

BP TRCC M6x12 HE



Tige filetée M8 + 2 Ecrous HE M8
(Threaded rod M8 + 2 Nut M8)

Chemin de câbles fil
(Mesh tray)



Description	Code	Masse/Weight Kg/p	Ep./Th. mm	l./w. mm
S100U 200 SZ	747101	0,23	2,00	194
S100U 250 SZ	747102	0,28	2,00	244
S100U 350 SZ	747103	0,39	2,00	344
S100U 450 SZ	747104	0,49	2,00	444
S100U 550 SZ	747105	0,61	2,00	544
S100U 650 SZ	747106	0,75	2,00	644

G : Pre-galvanised according to NF EN 10346 (S220 GD / Z).

SZ : Tôle d'acier galvanisé avant fabrication suivant NF EN 10346 (S220 GD / Z).



www.niedaxfrance.fr

RAIL U S100U SZ
CHANNEL S100U G



ASSISTANCE TECHNIQUE
+33 (0)1 55 95 92 17
pole.technique@niedax.fr

FT02015

NIEDAX
France

