

1SNA114825R0500 ✓ ACTIVE

ENTRELEC | ENTRELEC SNA

TE Internal #: 1SNA114825R0500

Terminal Block & Strip Insulating Accessories, Circuit Separator,
Used With Screw Clamp Terminal Blocks, ENTRELEC SNA

[View on TE.com >](#)



Connectors > Terminal Blocks & Strips > Terminal Block & Strip Accessories > Terminal Block & Strip Insulating Accessories



Insulating Accessory Type: **Circuit Separator**

Compatible With Block or Strip Type: **Screw Clamp Terminal Blocks**

Features

Product Type Features

Insulating Accessory Type	Circuit Separator
---------------------------	-------------------

Operation/Application

Compatible With Block or Strip Type	Screw Clamp Terminal Blocks
-------------------------------------	-----------------------------

Product Compliance

[For compliance documentation, visit the product page on TE.com>](#)

EU RoHS Directive 2011/65/EU	Compliant
EU ELV Directive 2000/53/EC	Compliant
China RoHS 2 Directive MIIT Order No 32, 2016	No Restricted Materials Above Threshold
EU REACH Regulation (EC) No. 1907/2006	Current ECHA Candidate List: JUNE 2022 (224) Candidate List Declared Against: JUNE 2022 (224) Does not contain REACH SVHC
Halogen Content	Low Halogen - Br, Cl, F, I < 900 ppm per homogenous material. Also BFR/CFR/PVC Free
Solder Process Capability	Not reviewed for solder process capability

Product Compliance Disclaimer

This information is provided based on reasonable inquiry of our suppliers and represents our current actual knowledge based on the information they provided. This information is subject to change. The part numbers that TE has identified as EU RoHS compliant have a maximum concentration of 0.1% by weight in homogenous materials for lead, hexavalent chromium, mercury, PBB, PBDE, DBP, BBP, DEHP, DIBP, and 0.01% for cadmium, or qualify for an exemption to these limits as defined in the Annexes of Directive 2011/65/EU (RoHS2). Finished electrical and electronic equipment products will be CE marked as required by Directive 2011/65/EU. Components may not be CE marked. Additionally, the part numbers that TE has identified as EU ELV compliant have a maximum concentration of 0.1% by weight in homogenous materials for lead, hexavalent chromium, and mercury, and 0.01% for cadmium, or qualify for an exemption to these limits as defined in the Annexes of Directive 2000/53/EC (ELV). Regarding the REACH Regulation, the information TE provides on SVHC in articles for this part number is based on the latest European Chemicals Agency (ECHA) 'Guidance on requirements for substances in articles' posted at this URL: <https://echa.europa.eu/guidance-documents/guidance-on-reach>

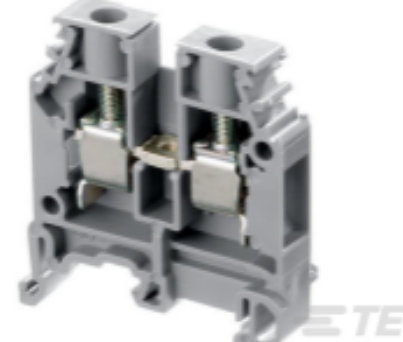
Compatible Parts



TE Part # 1SNA105001R2700
M4/6



TE Part # 1SNA105002R2000
M4/6



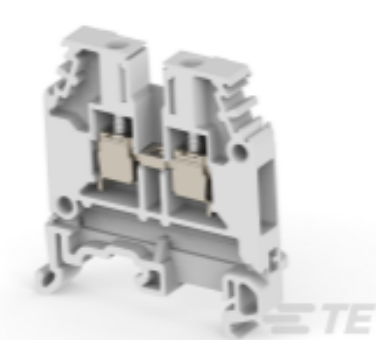
TE Part # 1SNA105004R2200
M6/8



TE Part # 1SNA105031R1400
M4/6



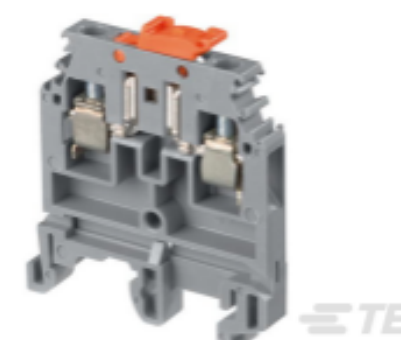
TE Part # 1SNA105032R1500
M4/6



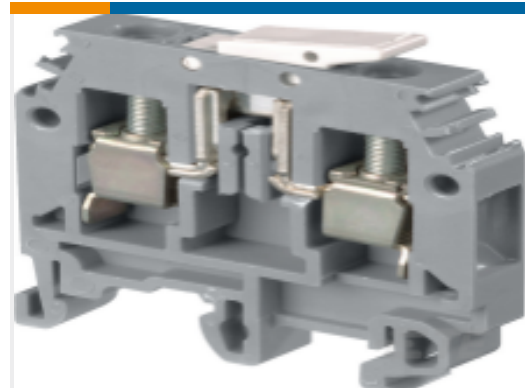
TE Part # 1SNA105051R2000
M4/6



TE Part # 1SNA105052R2100
MA2.5/5



TE Part # 1SNA105053R2200
M4/6.SNB



TE Part # 1SNA105055R2400
M6/8.SNB



TE Part # 1SNA105075R2000
MA2.5/5



TE Part # 1SNA105077R2200
MA2.5/5



TE Part # 1SNA105116R1600
M4/6



TE Part # 1SNA105118R2000
M6/8



TE Part # 1SNA105120R2600
M10/10



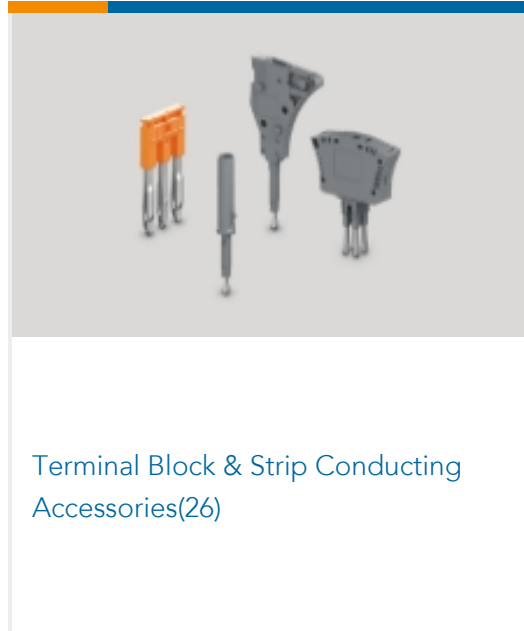
TE Part # 1SNA105128R2200
M6/8.1



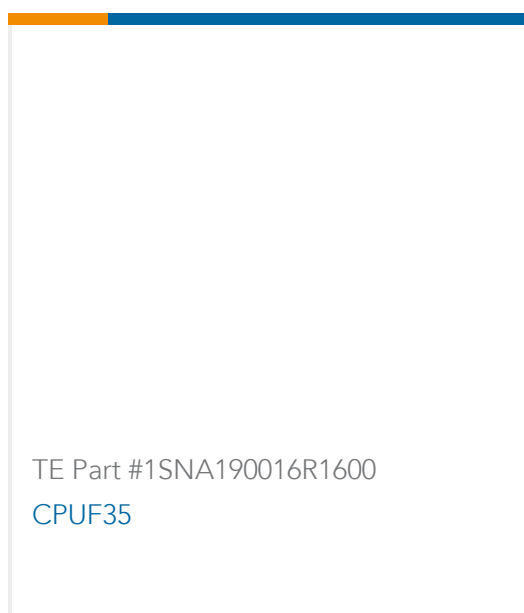
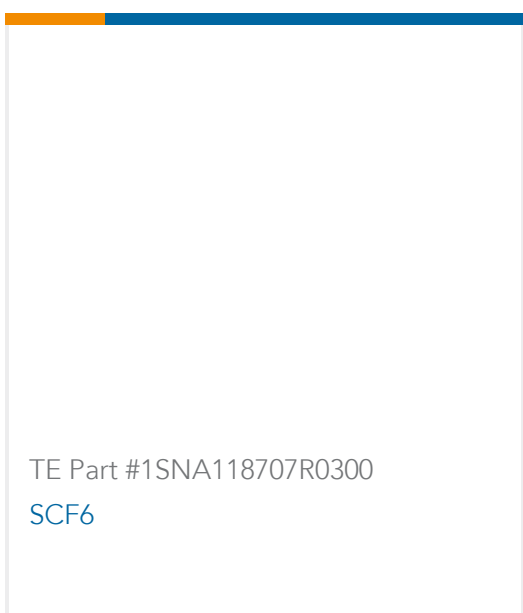
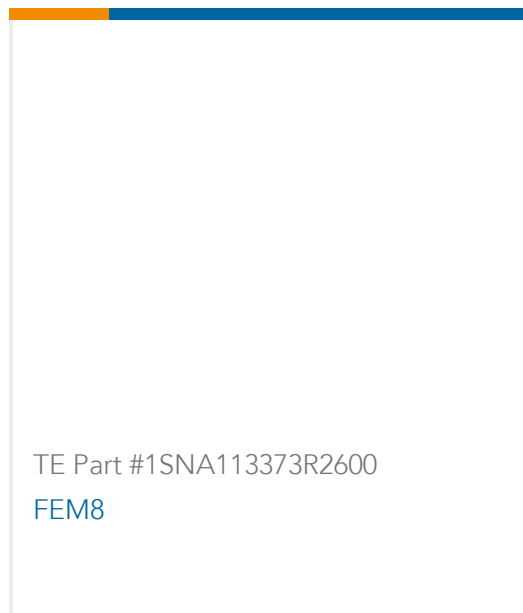
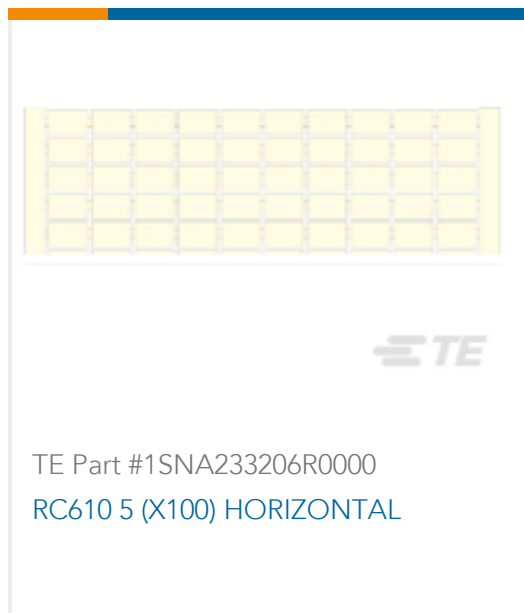
TE Part # 1SNA105129R2300
M16/12



Also in the Series | ENTRELEC SNA



Customers Also Bought





Documents

CAD Files

3D PDF

3D

Customer View Model

[ENG_CVM_CVM_1SNA114825R0500_A.2d_dxf.zip](#)

English

Customer View Model

[ENG_CVM_CVM_1SNA114825R0500_A.3d_igs.zip](#)

English

Customer View Model

[ENG_CVM_CVM_1SNA114825R0500_A.3d_stp.zip](#)

English

By downloading the CAD file I accept and agree to the [Terms and Conditions](#) of use.

Datasheets & Catalog Pages

[Catalogue - ENTRELEC terminal-blocks-sna-series](#)

English

SCFM6

English

[ENTRELEC Terminal Block - Master Catalog](#)

English

[ENTRELEC Terminal Blocks Catalogue \(RUS\)](#)