

1SNA165114R1700 ✓ ACTIVE

ENTRELEC | ENTRELEC SNA

TE Internal #: 1SNA165114R1700

Modular Terminal Blocks, Ground, Screw Clamp Terminal Block, Green, Product Spacing .314 in [8 mm], 2 Position, Screw Terminal, Signal, ENTRELEC SNA

[View on TE.com >](#)



Connectors > Terminal Blocks & Strips > Modular Terminal Blocks



Block Function: **Ground**

Modular Terminal Block Product Type: **Screw Clamp Terminal Block**

Rated Cross Section: **6 mm<sup>2</sup>**

Primary Product Color: **Green**

## Features

### Product Type Features

Modular Terminal Block Product Type	Screw Clamp Terminal Block
-------------------------------------	----------------------------

### Configuration Features

Gauge Type	A5
Number of Levels	1
Number of Poles	2
Number of Circuits	1
Block Function	Ground
Number of Positions	2

### Electrical Characteristics

Short-Time Withstanding Current Rating @ 1s	720 A
---------------------------------------------	-------

### Body Features

Product Weight	26 g[.917 oz]
Primary Product Color	Green

### Termination Features

Termination Method to Wire & Cable	Screw Terminal
------------------------------------	----------------

### Mechanical Attachment

DIN Rail Mounting Type	G32, TH35-15, TH35-7.5
Tightening Torque	7.1 in-lbs

Connector Mounting Type	DIN Rail
-------------------------	----------

### Housing Features

Housing Material	Polyamide 6.6
------------------	---------------

### Dimensions

Main Circuit Capacity - 1 Rigid Stranded Conductor per Screw Clamp	.5 – 10 mm <sup>2</sup>
--------------------------------------------------------------------	-------------------------

Wire Stripping Length	12 mm [.472 in]
-----------------------	-----------------

Main Circuit Capacity - 1 Flexible Conductor per Spring Clamp	.5 – 6 mm <sup>2</sup>
---------------------------------------------------------------	------------------------

Product Depth	40.5 mm
---------------	---------

Product Width	8 mm [.314 in]
---------------	----------------

Product Length	40.5 mm
----------------	---------

Product Height	43.5 mm
----------------	---------

Rated Cross Section	6 mm <sup>2</sup>
---------------------	-------------------

Product Spacing	8 mm [.314 in]
-----------------	----------------

Wire Size	6 mm <sup>2</sup>
-----------	-------------------

### Usage Conditions

Storage Temperature Range	-55 – 110 °C [-67 – 230 °F]
---------------------------	-----------------------------

Installation Temperature Range	-5 – 40 °C [23 – 104 °F]
--------------------------------	--------------------------

Operating Temperature Range	-55 – 110 °C [-67 – 230 °F]
-----------------------------	-----------------------------

### Operation/Application

Circuit Application	Signal
---------------------	--------

### Industry Standards

UL Flammability Rating	UL 94V-0
------------------------	----------

### Product Compliance

[For compliance documentation, visit the product page on TE.com>](#)

EU RoHS Directive 2011/65/EU	Compliant with Exemptions
------------------------------	---------------------------

EU ELV Directive 2000/53/EC	Compliant with Exemptions
-----------------------------	---------------------------

China RoHS 2 Directive MIIT Order No 32, 2016	Restricted Materials Above Threshold
-----------------------------------------------	--------------------------------------

EU REACH Regulation (EC) No. 1907/2006	Current ECHA Candidate List: JUNE 2022 (224) Candidate List Declared Against: JUNE 2022 (224) SVHC > Threshold:
----------------------------------------	-----------------------------------------------------------------------------------------------------------------------



Pb (.35% in Component Part)

**Article Safe Usage Statements:**  
Do not eat, drink or smoke when using this product. Wash thoroughly after handling. Recycle if possible and dispose of the article by following all applicable governmental regulations relevant to your geographic location.

Halogen Content	Low Halogen - Br, Cl, F, I < 900 ppm per homogenous material. Also BFR/CFR/PVC Free
Solder Process Capability	Not reviewed for solder process capability

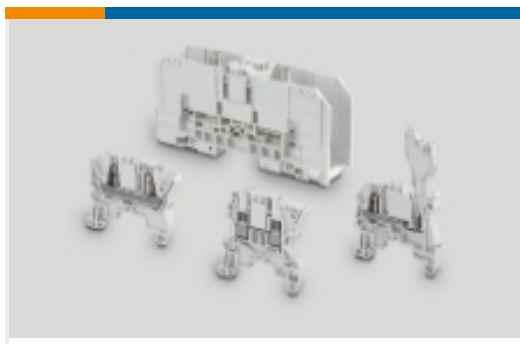
Product Compliance Disclaimer

This information is provided based on reasonable inquiry of our suppliers and represents our current actual knowledge based on the information they provided. This information is subject to change. The part numbers that TE has identified as EU RoHS compliant have a maximum concentration of 0.1% by weight in homogenous materials for lead, hexavalent chromium, mercury, PBB, PBDE, DBP, BBP, DEHP, DIBP, and 0.01% for cadmium, or qualify for an exemption to these limits as defined in the Annexes of Directive 2011/65/EU (RoHS2). Finished electrical and electronic equipment products will be CE marked as required by Directive 2011/65/EU. Components may not be CE marked. Additionally, the part numbers that TE has identified as EU ELV compliant have a maximum concentration of 0.1% by weight in homogenous materials for lead, hexavalent chromium, and mercury, and 0.01% for cadmium, or qualify for an exemption to these limits as defined in the Annexes of Directive 2000/53/EC (ELV). Regarding the REACH Regulation, the information TE provides on SVHC in articles for this part number is based on the latest European Chemicals Agency (ECHA) 'Guidance on requirements for substances in articles' posted at this URL: <https://echa.europa.eu/guidance-documents/guidance-on-reach>

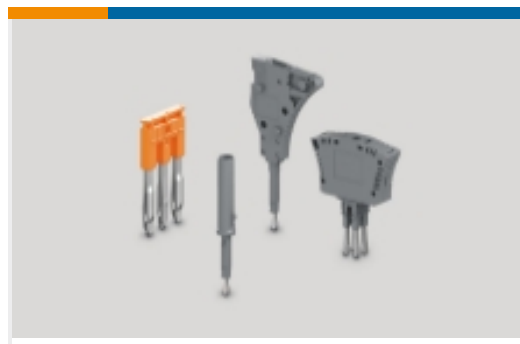
### Compatible Parts

 <p>TE Part # 1SNA103775R0000 RC65-BL</p>	 <p>TE Part # 1SNA103776R0100 RC65-RD</p>	 <p>TE Part # 1SNA232000R0000 RC65</p>	 <p>TE Part # 1SNA233000R0100 RC610</p>
 <p>TE Part # 1SNA118368R1600 FEM6</p>	 <p>TE Part # 1SNA118707R0300 SCF6</p>	 <p>TE Part # 1SNA236500R0600 RCT810</p>	 <p>TE Part # 1SNA399903R0200 BADL</p>

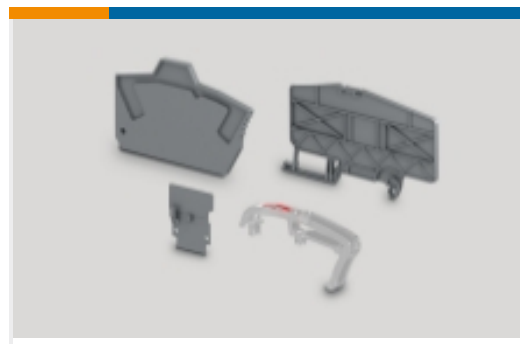
Also in the Series | **ENTRELEC SNA**



Modular Terminal Blocks(182)



Terminal Block & Strip Conducting Accessories(26)



Terminal Block & Strip Insulating Accessories(14)

## Customers Also Bought



TE Part #1SNK900001R0000  
BAM4



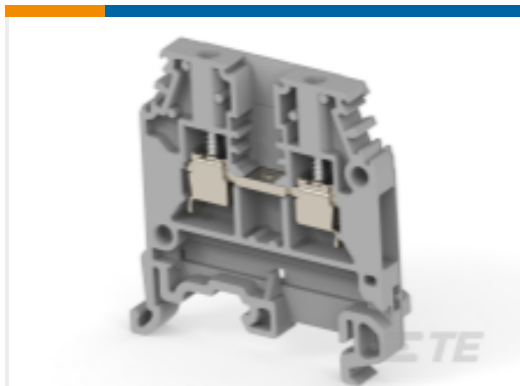
TE Part #1SNA115116R0700  
M4/6



TE Part #1SNA115120R1700  
M10/10



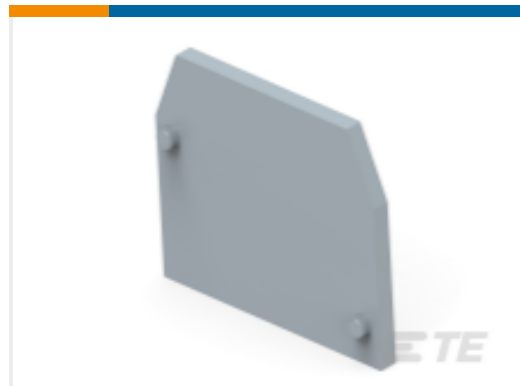
TE Part #1SNA115129R1400  
M16/12



TE Part #1SNA115486R0300  
MA2.5/5



TE Part #1SNA125118R1300  
M6/8.N



TE Part #1SNA118368R1600  
FEM6



TE Part #1SNA118707R0300  
SCF6



TE Part #1SNA094374R2000  
CPFT2/R-24



TE Part #1SSA265203R1100  
L26520311000

## Documents

### CAD Files

Customer View Model

[ENG\\_CVM\\_CVM\\_1SNA165114R1700\\_E.2d\\_dxf.zip](#)

English

Customer View Model

[ENG\\_CVM\\_CVM\\_1SNA165114R1700\\_E.3d\\_stp.zip](#)

English

Customer View Model

[ENG\\_CVM\\_CVM\\_1SNA165114R1700\\_E.3d\\_igs.zip](#)



English

[3D PDF](#)

3D

By downloading the CAD file I accept and agree to the [Terms and Conditions](#) of use.

## Datasheets & Catalog Pages

[Catalogue - ENTRELEC terminal-blocks-sna-series](#)

English

[M6/8.P](#)

English

[ENTRELEC Terminal Blocks Catalogue \(RUS\)](#)