

1SNA165115R1000 ✓ ACTIVE

ENTRELEC | ENTRELEC SNA

TE Internal #: 1SNA165115R1000

Modular Terminal Blocks, Ground, Screw Clamp Terminal Block,  
Green, Product Spacing .393 in [10 mm], 2 Position, Screw Terminal,  
Signal, ENTRELEC SNA

[View on TE.com >](#)



Connectors > Terminal Blocks & Strips > Modular Terminal Blocks



Block Function: **Ground**

Modular Terminal Block Product Type: **Screw Clamp Terminal Block**

Rated Cross Section: **10 mm<sup>2</sup>**

Primary Product Color: **Green**

## Features

### Product Type Features

Modular Terminal Block Product Type	Screw Clamp Terminal Block
-------------------------------------	----------------------------

### Configuration Features

Gauge Type	B6
Number of Levels	1
Number of Poles	2
Number of Circuits	1
Block Function	Ground
Number of Positions	2

### Electrical Characteristics

Short-Time Withstanding Current Rating @ 1s	1200 A
---	--------

### Body Features

Product Weight	29 g
Primary Product Color	Green

### Termination Features

Termination Method to Wire & Cable	Screw Terminal
------------------------------------	----------------

### Mechanical Attachment

DIN Rail Mounting Type	G32, TH35-15, TH35-7.5
Tightening Torque	10.6 in-lbs

Connector Mounting Type	DIN Rail
-------------------------	----------

### Housing Features

Housing Material	Polyamide 6.6
------------------	---------------

### Dimensions

Main Circuit Capacity - 1 Rigid Stranded Conductor per Screw Clamp	.5 – 16 mm <sup>2</sup>
--	-------------------------

Wire Stripping Length	12 mm [.472 in]
-----------------------	-----------------

Main Circuit Capacity - 1 Flexible Conductor per Spring Clamp	.5 – 10 mm <sup>2</sup>
---	-------------------------

Product Depth	40.5 mm
---------------	---------

Product Width	10 mm [.393 in]
---------------	-----------------

Product Length	40.5 mm
----------------	---------

Product Height	43.5 mm
----------------	---------

Rated Cross Section	10 mm <sup>2</sup>
---------------------	--------------------

Product Spacing	10 mm [.393 in]
-----------------	-----------------

Wire Size	10 mm <sup>2</sup>
-----------	--------------------

### Usage Conditions

Storage Temperature Range	-55 – 110 °C [-67 – 230 °F]
---------------------------	-----------------------------

Installation Temperature Range	-5 – 40 °C [23 – 104 °F]
--------------------------------	--------------------------

Operating Temperature Range	-55 – 110 °C [-67 – 230 °F]
-----------------------------	-----------------------------

### Operation/Application

Circuit Application	Signal
---------------------	--------

### Industry Standards

UL Flammability Rating	UL 94V-0
------------------------	----------

### Product Compliance

[For compliance documentation, visit the product page on TE.com>](#)

EU RoHS Directive 2011/65/EU	Compliant with Exemptions
------------------------------	---------------------------

EU ELV Directive 2000/53/EC	Compliant with Exemptions
-----------------------------	---------------------------

China RoHS 2 Directive MIIT Order No 32, 2016	Restricted Materials Above Threshold
---	--------------------------------------

EU REACH Regulation (EC) No. 1907/2006	Current ECHA Candidate List: JUNE 2022 (224) Candidate List Declared Against: JUNE 2022 (224) SVHC > Threshold:
--	---



Pb (.35% in Component Part)

**Article Safe Usage Statements:**

Do not eat, drink or smoke when using this product. Wash thoroughly after handling. Recycle if possible and dispose of the article by following all applicable governmental regulations relevant to your geographic location.

Halogen Content

Low Halogen - Br, Cl, F, I < 900 ppm per homogenous material. Also BFR/CFR/PVC Free

Solder Process Capability

Not reviewed for solder process capability

Product Compliance Disclaimer

This information is provided based on reasonable inquiry of our suppliers and represents our current actual knowledge based on the information they provided. This information is subject to change. The part numbers that TE has identified as EU RoHS compliant have a maximum concentration of 0.1% by weight in homogenous materials for lead, hexavalent chromium, mercury, PBB, PBDE, DBP, BBP, DEHP, DIBP, and 0.01% for cadmium, or qualify for an exemption to these limits as defined in the Annexes of Directive 2011/65/EU (RoHS2). Finished electrical and electronic equipment products will be CE marked as required by Directive 2011/65/EU. Components may not be CE marked. Additionally, the part numbers that TE has identified as EU ELV compliant have a maximum concentration of 0.1% by weight in homogenous materials for lead, hexavalent chromium, and mercury, and 0.01% for cadmium, or qualify for an exemption to these limits as defined in the Annexes of Directive 2000/53/EC (ELV). Regarding the REACH Regulation, the information TE provides on SVHC in articles for this part number is based on the latest European Chemicals Agency (ECHA) 'Guidance on requirements for substances in articles' posted at this URL: <https://echa.europa.eu/guidance-documents/guidance-on-reach>

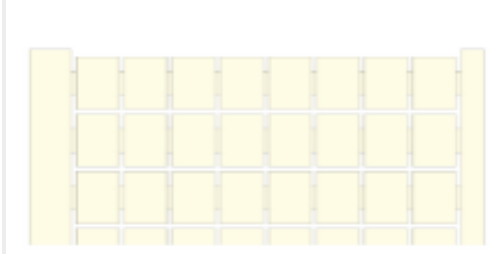
## Compatible Parts



TE Part # 1SNA114825R0500  
SCFM6




TE Part # 1SNA234000R0200  
RC810



TE Part # 1SNA238000R1600  
RC1010



TE Part # 1SNA236500R0600  
RCT810

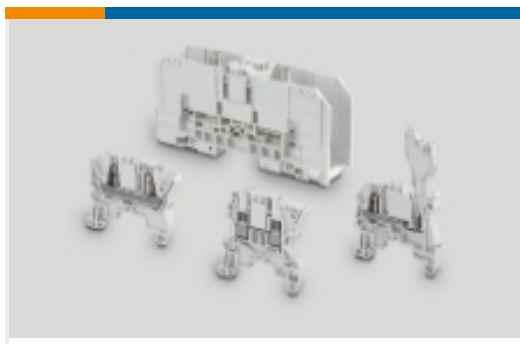


TE Part # 1SNA399903R0200  
BADL

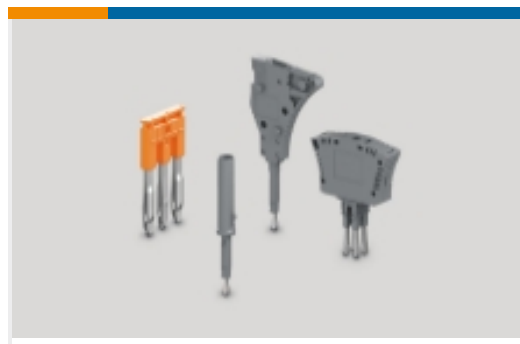


TE Part # 1SNA168410R0700  
RTM7

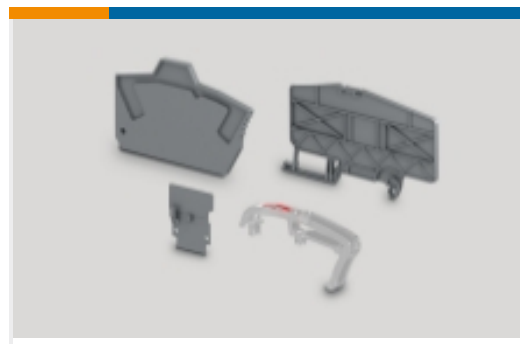
Also in the Series | **ENTRELEC SNA**



Modular Terminal Blocks(182)



Terminal Block & Strip Conducting Accessories(26)



Terminal Block & Strip Insulating Accessories(14)

## Customers Also Bought



TE Part #1SNA115116R0700  
M4/6



TE Part #1SNA115118R1100  
M6/8



TE Part #1SNA115129R1400  
M16/12



TE Part #1SNA125118R1300  
M6/8.N



TE Part #1SNA125120R1100  
M10/10.N



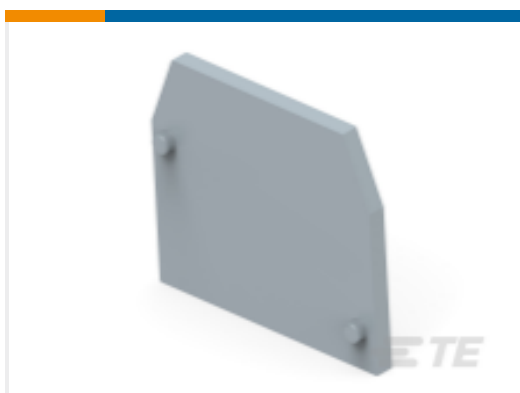
TE Part #1SNA165113R1600  
M4/6.P



TE Part #1SNA400306R1100  
D70/22.N



TE Part #1SNK706022R0000  
ZK4-4P-BL



TE Part #1SNA118368R1600  
FEM6

## Documents

### CAD Files

[3D PDF](#)

[3D](#)

### Customer View Model

[ENG\\_CVM\\_CVM\\_1SNA165115R1000\\_A1.2d\\_dxf.zip](#)

English

### Customer View Model

[ENG\\_CVM\\_CVM\\_1SNA165115R1000\\_A1.3d\\_igs.zip](#)

1SNA165115R1000

Modular Terminal Blocks, Ground, Screw Clamp Terminal Block, Green, Product Spacing .393 in [10 mm], 2 Position, Screw Terminal, Signal, ENTRELEC SNA



English

**Customer View Model**

[ENG\\_CVM\\_CVM\\_1SNA165115R1000\\_A1.3d\\_stp.zip](#)

English

By downloading the CAD file I accept and agree to the [Terms and Conditions](#) of use.

## Datasheets & Catalog Pages

[Catalogue - ENTRELEC terminal-blocks-sna-series](#)

English

[M10/10.P](#)

English

[ENTRELEC Terminal Blocks Catalogue \(RUS\)](#)