



Product Compliance

For compliance documentation, visit the product page on TE.com>

EU RoHS Directive 2011/65/EU	Compliant
EU ELV Directive 2000/53/EC	Compliant
China RoHS 2 Directive MIIT Order No 32, 2016	No Restricted Materials Above Threshold
EU REACH Regulation (EC) No. 1907/2006	Current ECHA Candidate List: JUNE 2022 (224) Candidate List Declared Against: JUNE 2022 (224) Does not contain REACH SVHC
Halogen Content	Low Halogen - Br, Cl, F, I < 900 ppm per homogenous material. Also BFR/CFR/PVC Free
Solder Process Capability	Not reviewed for solder process capability

Product Compliance Disclaimer

This information is provided based on reasonable inquiry of our suppliers and represents our current actual knowledge based on the information they provided. This information is subject to change. The part numbers that TE has identified as EU RoHS compliant have a maximum concentration of 0.1% by weight in homogenous materials for lead, hexavalent chromium, mercury, PBB, PBDE, DBP, BBP, DEHP, DIBP, and 0.01% for cadmium, or qualify for an exemption to these limits as defined in the Annexes of Directive 2011/65/EU (RoHS2). Finished electrical and electronic equipment products will be CE marked as required by Directive 2011/65/EU. Components may not be CE marked. Additionally, the part numbers that TE has identified as EU ELV compliant have a maximum concentration of 0.1% by weight in homogenous materials for lead, hexavalent chromium, and mercury, and 0.01% for cadmium, or qualify for an exemption to these limits as defined in the Annexes of Directive 2000/53/EC (ELV). Regarding the REACH Regulation, the information TE provides on SVHC in articles for this part number is based on the latest European Chemicals Agency (ECHA) ‘Guidance on requirements for substances in articles’ posted at this URL: <https://echa.europa.eu/guidance-documents/guidance-on-reach>

Compatible Parts



TE Part # 1SNA400270R2000
[D4/8.D2.P.SF](#)



TE Part # 1SNA400271R1500
[D4/8.D2.P.SFL](#)



TE Part # 1SNA400272R1600
[D4/8.D2.P.SFD](#)

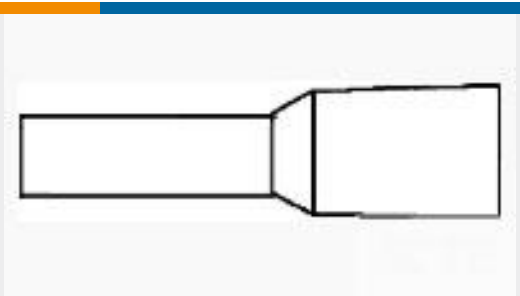
Customers Also Bought



TE Part #1623927-8
CFR16 5% 120R



TE Part #450813-000
CRSM-107/29-500/239(S5)



TE Part #2-966067-2
ADERENDHUELSE N GE



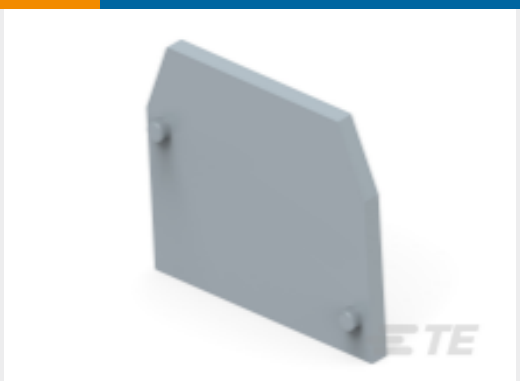
TE Part #1SNA115118R1100
M6/8



TE Part #1SNA125116R0100
M4/6.N



TE Part #1SNA165114R1700
M6/8.P



TE Part #1SNA118368R1600
FEM6



TE Part #2339000-9
KIT STD 36 BOLTS H M14X70/34
DIN931-7075



TE Part #709615-1
J 38 (19) U - J 39 (1) U



TE Part #710856-1
EJASE 95-50/70-54

Documents

Datasheets & Catalog Pages

Catalogue - ENTRELEC terminal-blocks-sna-series

English

BJM8-4 POLES

English

ENTRELEC Terminal Block - Master Catalog

English

ENTRELEC Terminal Blocks Catalogue (RUS)