



Product Compliance

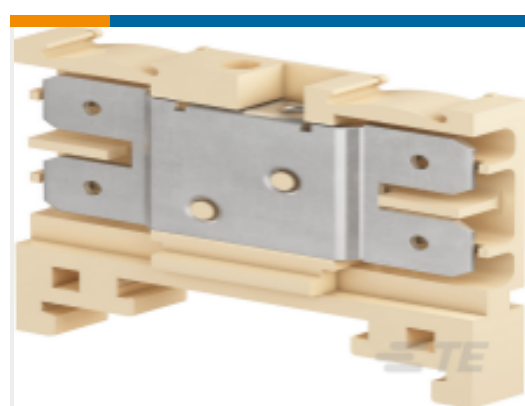
[For compliance documentation, visit the product page on TE.com>](#)

EU RoHS Directive 2011/65/EU	Compliant
EU ELV Directive 2000/53/EC	Compliant
China RoHS 2 Directive MIIT Order No 32, 2016	No Restricted Materials Above Threshold
EU REACH Regulation (EC) No. 1907/2006	Current ECHA Candidate List: JUNE 2022 (224) Candidate List Declared Against: JUNE 2022 (224) Does not contain REACH SVHC
Halogen Content	Low Halogen - Br, Cl, F, I < 900 ppm per homogenous material. Also BFR/CFR/PVC Free
Solder Process Capability	Not reviewed for solder process capability

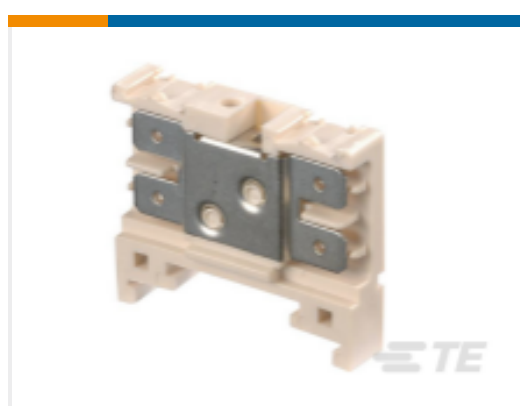
Product Compliance Disclaimer

This information is provided based on reasonable inquiry of our suppliers and represents our current actual knowledge based on the information they provided. This information is subject to change. The part numbers that TE has identified as EU RoHS compliant have a maximum concentration of 0.1% by weight in homogenous materials for lead, hexavalent chromium, mercury, PBB, PBDE, DBP, BBP, DEHP, DIBP, and 0.01% for cadmium, or qualify for an exemption to these limits as defined in the Annexes of Directive 2011/65/EU (RoHS2). Finished electrical and electronic equipment products will be CE marked as required by Directive 2011/65/EU. Components may not be CE marked. Additionally, the part numbers that TE has identified as EU ELV compliant have a maximum concentration of 0.1% by weight in homogenous materials for lead, hexavalent chromium, and mercury, and 0.01% for cadmium, or qualify for an exemption to these limits as defined in the Annexes of Directive 2000/53/EC (ELV). Regarding the REACH Regulation, the information TE provides on SVHC in articles for this part number is based on the latest European Chemicals Agency (ECHA) 'Guidance on requirements for substances in articles' posted at this URL: <https://echa.europa.eu/guidance-documents/guidance-on-reach>

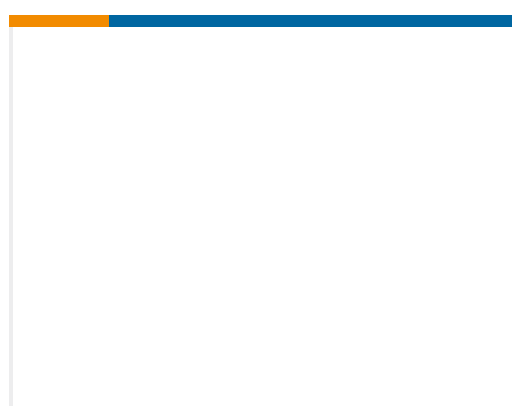
Compatible Parts



TE Part # 1SNA160487R2500
HD2.5/6.2G.2G.1

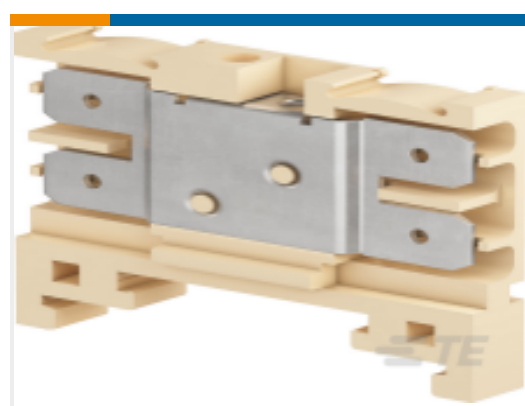


TE Part # 1SNA160606R1400
HD6/8.2G.2G.1



TE Part # 1SNA178802R0700
BJHS ENT 7193

Customers Also Bought



TE Part #1SNA160487R2500
HD2.5/6.2G.2G.1



TE Part #827382-1
RAENDELKOPFSCHRAUBE



TE Part #1-1393806-1
V23154C 421B104



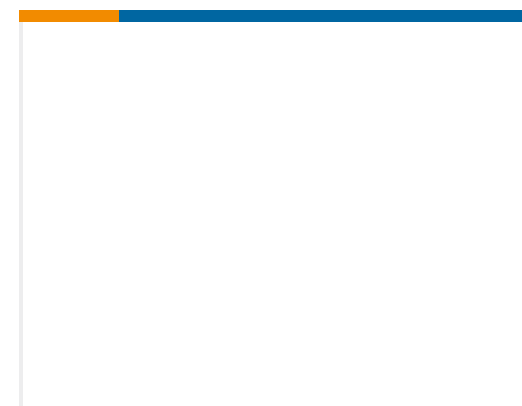
TE Part #1SNA168481R2300
BJS61-2



TE Part #1SNS320001Z3929
3EST000242-0567-1 (3EST000242-0567)



TE Part #1SNS420000Z1297
9.4-432-171-D ()



TE Part #1SNS420000Z2709
94433013-A (Klemmenlat X4.3)



TE Part #1SNS420001Z1437
07-3566 0123-4 Rev.0



TE Part #1SNS420052Z0000
SNCB 433_9.4-433-017M_1_1-B
(0309081.00)



TE Part #1SNS420055Z0000
SNCB 433_9.4-433-302M_1_1-C
(0309082.00)

Documents

Datasheets & Catalog Pages

FEH3

English

ENTRELEC Terminal Block - Master Catalog

English