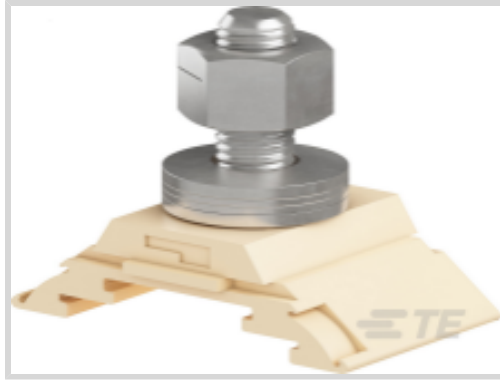


1SNA295448R0100 ✓ ACTIVE

TE Internal #: 1SNA295448R0100

TE Internal Description: HD120/30.F10.31

[View on TE.com >](#)



## Product Compliance

[For compliance documentation, visit the product page on TE.com>](#)

EU RoHS Directive 2011/65/EU	Compliant with Exemptions
EU ELV Directive 2000/53/EC	Compliant with Exemptions
China RoHS 2 Directive MIIT Order No 32, 2016	Restricted Materials Above Threshold
EU REACH Regulation (EC) No. 1907/2006	Current ECHA Candidate List: JUNE 2022 (224) Candidate List Declared Against: JAN 2022 (223) SVHC > Threshold: Pb (.35% in Component Part) <b>Article Safe Usage Statements:</b> Do not eat, drink or smoke when using this product. Wash thoroughly after handling. Recycle if possible and dispose of the article by following all applicable governmental regulations relevant to your geographic location.
Halogen Content	Not Yet Reviewed for halogen content
Solder Process Capability	Not reviewed for solder process capability

### Product Compliance Disclaimer

This information is provided based on reasonable inquiry of our suppliers and represents our current actual knowledge based on the information they provided. This information is subject to change. The part numbers that TE has identified as EU RoHS compliant have a maximum concentration of 0.1% by weight in homogenous materials for lead, hexavalent chromium, mercury, PBB, PBDE, DBP, BBP, DEHP, DIBP, and 0.01% for cadmium, or qualify for an exemption to these limits as defined in the Annexes of Directive 2011/65/EU (RoHS2). Finished electrical and electronic equipment products will be CE marked as required by Directive 2011/65/EU. Components may not be CE marked. Additionally, the part numbers that TE has identified as EU ELV compliant have a maximum concentration of 0.1% by weight in homogenous materials for lead, hexavalent chromium, and mercury, and 0.01% for cadmium, or qualify for an exemption to these limits as defined in the Annexes of Directive 2000/53/EC (ELV). Regarding the REACH Regulation, the information TE provides on SVHC in articles for this part number is based on the latest European Chemicals Agency (ECHA) 'Guidance on requirements for substances in articles' posted at this URL: <https://echa.europa.eu/guidance-documents/guidance-on-reach>


## Compatible Parts



TE Part # 1SNK900001R0000  
BAM4



TE Part # 1SNA199412R1500  
SCH8



TE Part # 1SNA231000R0700  
RC510



TE Part # 1SNA233000R0100  
RC610




TE Part # 1SNA295427R1400  
INHD1



TE Part # 1SNA187312R1400  
CPM



TE Part # 1SNA163156R2700  
RTC



TE Part # 1SNA163479R0300  
BJH311




TE Part # 1SNA163497R1600  
PEFH



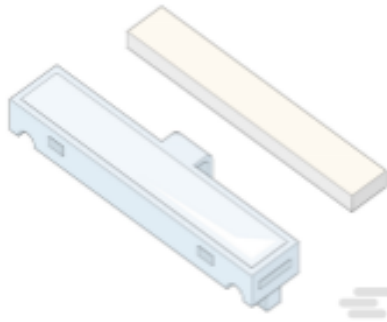
TE Part # 1SNA163518R2200  
RPED



TE Part # 1SNA168355R1300  
BAH24



TE Part # 1SNA197312R1600  
CPM



TE Part # 1SNA199411R1400  
FJH501


### Customers Also Bought




TE Part #1-2344491-1  
KTHV-ST3652-CLAMP-551



TE Part #1-1555907-1  
HVIB-0360-11-075-088



TE Part #1SNS420000Z2433  
40-5209 749-F (B-CMP72)



TE Part #1SNS420000Z2575  
40-5209 767-D (TB19-CMP1)



TE Part #1SNS420000Z2576  
40-5209 769-D (TB24-CPM2 / TB25-  
CMP2)

TE Part #1SNS420000Z2822  
40-5217 356-F (TB09-CAB (voiture Z1-2)

TE Part #1SNS420244Z0000  
40-5209 750-H (TB01-CAB / TB06-CAB)

TE Part #1SNS420419Z0000  
AD00003405771-F (UD-XT7102 voiture  
BMX)

TE Part #1SNS420783Z0000  
AD00003362665-L (TB27-CMP2  
(voiture Z1))

TE Part #ZPF000000000121730  
CONTACT M 6 - AG - 4MM LAITON  
SERT.

## Documents

### Datasheets & Catalog Pages

[HD120/30.F10.31](#)

English

[ENTRELEC Terminal Block - Master Catalog](#)

English