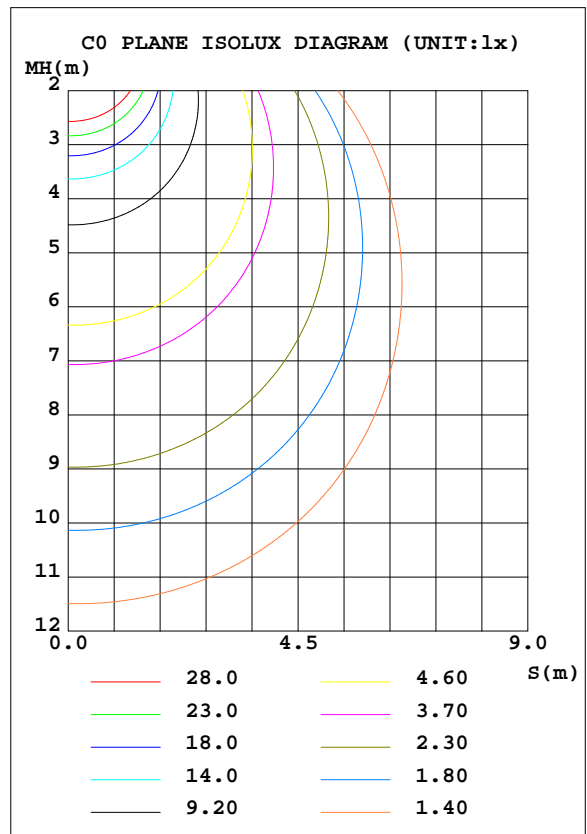
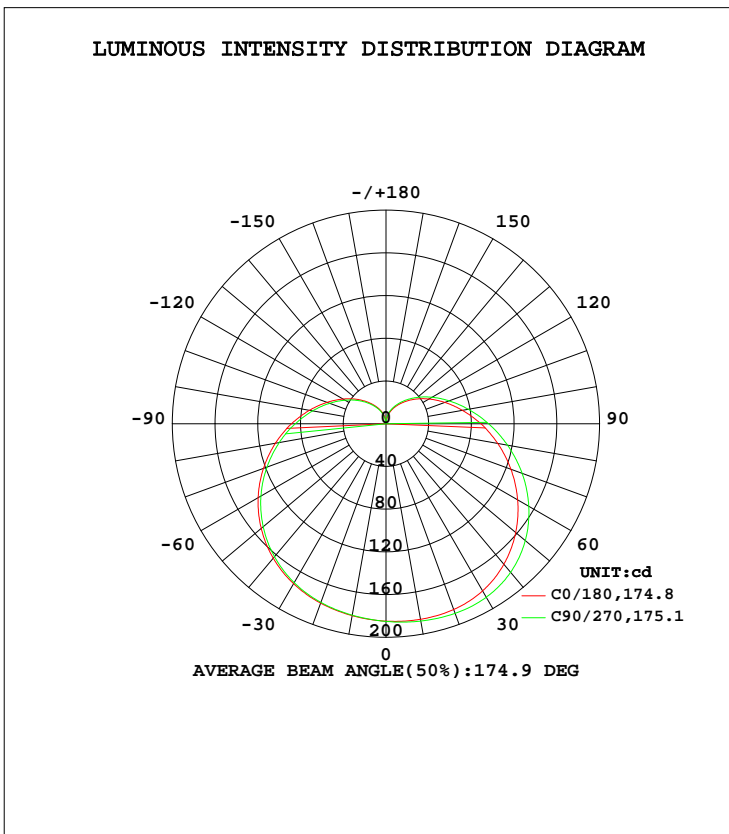


LUMINAIRE PHOTOMETRIC TEST REPORT

Test:U:230.05V I:0.0833A P:10.784W PF:0.5625 Freq:50.00Hz Lamp Flux:1184.85x1 lm		
NAME:	TYPE:	WEIGHT:
SPEC.: A60_s_8cSA-A1060ST	DIM.:	SERIAL No.: A2017008E001
MFR.:	SUR.:	Shielding Angle:

DATA OF LAMP		PHOTOMETRIC DATA Eff: 109.88 lm/W			
MODEL		I _{max} (cd)	189.5	S/MH(C0/180)	1.41
NOMINAL POWER(W)		LOR(%)	100.0	S/MH(C90/270)	1.40
RATED VOLTAGE(V)		TOTAL FLUX(lm)	1184.8	η UP, DN(C0-180)	13.1, 38.9
NOMINAL FLUX(lm)	1184.85	CIE CLASS	SEMI-D.	η UP, DN(C180-360)	12.0, 36.0
LAMPS INSIDE	1	η up(%)	25.1	CIBSE SHR NOM	1.50
TEST VOLTAGE(V)		η down(%)	74.9	CIBSE SHR MAX	1.55



C Range: 0 - 360DEG
 C Interval: 22.5DEG
 Test Speed: HIGH
 Temperature:24.7DEG
 Operators:LSC
 Test Date:2020-09-23

γ Range: 0 - 180DEG
 γ Interval: 0.5DEG
 Test System:EVERFINE GO-R5000_V2 SYSTEM V2.00.429
 Humidity:48%
 Test Distance:1.533m [K=1.0000]
 Remarks:

Checker:

Assessor: LiHua