

RF RGB Programmable Led Controller

Important: Read All Instructions Prior to Installation

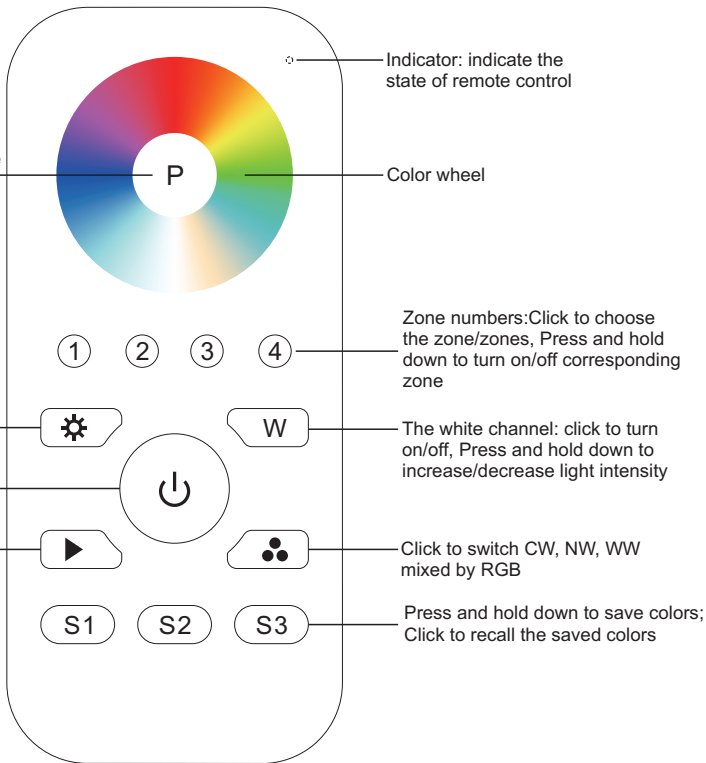
Function introduction

Program: short press to start program, LED light connected with receiver will blink, then touch color wheel to choose a color, then choose another color (make sure to choose at least 2 colors, most 7 colors), then short press the button again to save the chosen colors, LED light connected with receiver will blink to indicate successful program. Now you can use button ▶ to play the colors with different running effects and speeds.

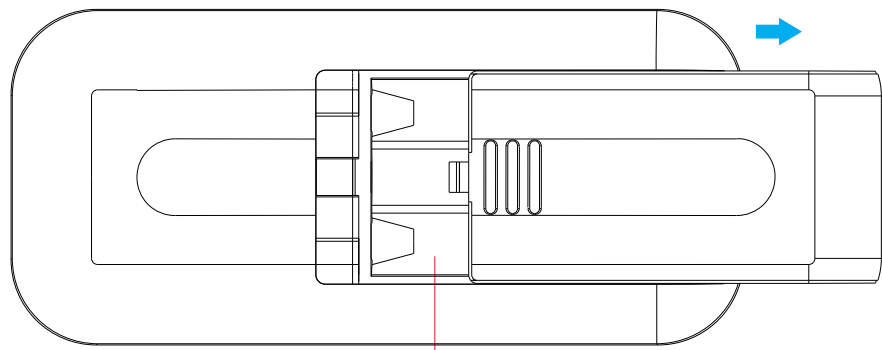
Press and hold down to increase/decrease light intensity of RGB channels

Click to turn ON/OFF all zones

Click to play programmed colors with different running effects: jump, flash, fade, strobe. Click to switch effects, press and hold down to speed up/down the effects.



Front side



Bottom side

Product Data

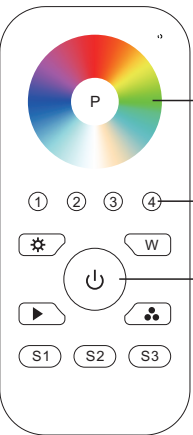
| Output | RF signal |
|-----------------------|---------------------|
| Operation Frequency | 869.5/916.5/434MHz |
| Power Supply | 4.5V(3xAAA battery) |
| Operating temperature | 0-40°C |
| Relative humidity | 8% to 80% |
| Dimensions | 120x55x17mm |

- Control 4 zones of RF receivers separately.
- RGBW color controller
- High sensitive & high stable, fast & precise color control.
- Compatible with all universal series RF receivers
- 1 receiver can be paired by max 8 different remote controls.
- Waterproof grade: IP20

Safety & Warnings

- This device contains AAA batteries that shall be stored and disposed properly.
- DO NOT expose the device to moisture.

Pair with RF receiver(Method 1)



Step 1: Do wiring the RF receiver according to wiring diagram (please refer to the instruction of RF receiver that you would like to pair with).

Step 5: Touch the color wheel, LED lights connected with the RF receiver flicker once means the receiver is paired with zone 4 successfully.

Step 4: Choose and click a zone number (e.g. zone 4)

Step 2: Click ON/OFF button to activate the remote

Step 3: Click the "Learning Key" button on RF receiver or re-power on the receiver three times continuously to set it into pairing status



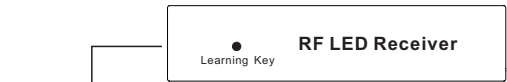
Pair with RF receiver(Method 2)



Step 1: Do wiring the RF receiver according to wiring diagram (please refer to the instruction of RF receiver that you would like to pair with).

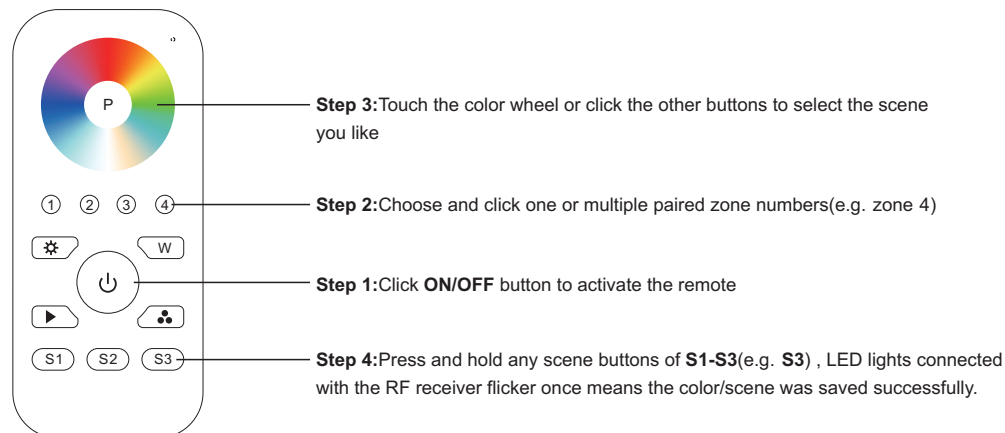
Step 4: Choose and click a zone number (e.g. zone 4) twice, then press and hold it continuously and quickly within 10 seconds, LED lights connected with the RF receiver flicker once means the receiver is paired with zone 4 successfully.

Step 2: Click ON/OFF button to activate the remote

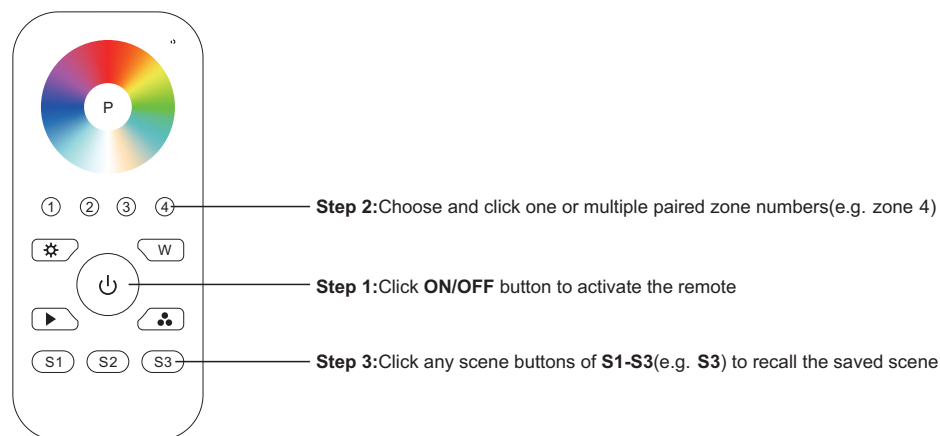


Step 3: Power off and power on the receiver

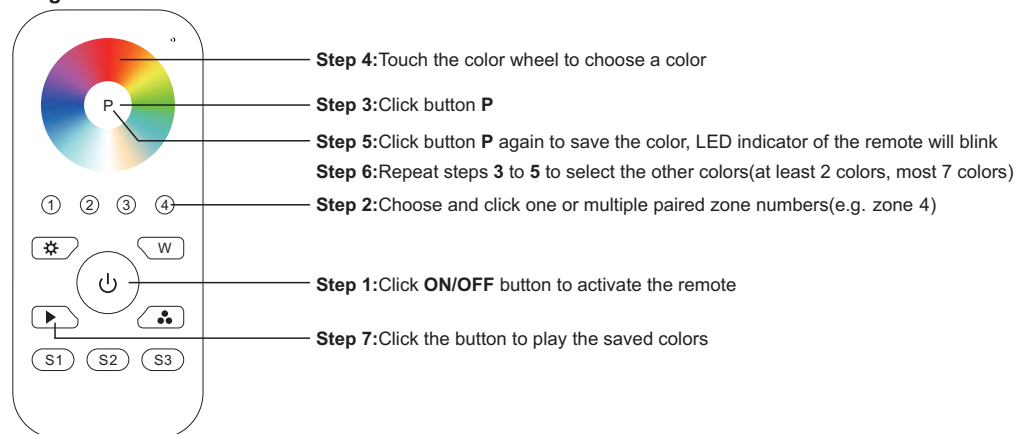
Save color/scene/mode



Recall the saved colors/scenes

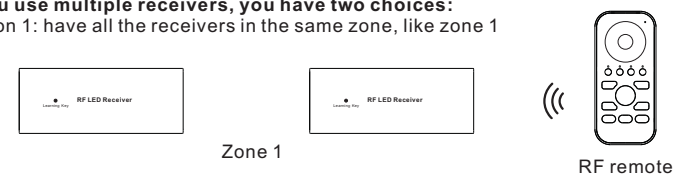


Program function

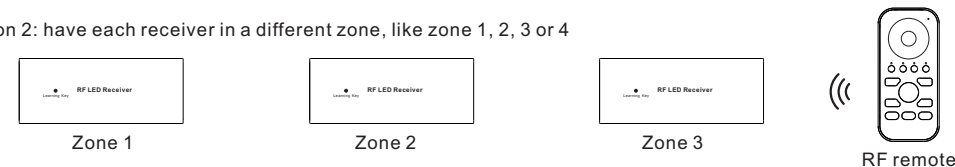


If you use multiple receivers, you have two choices:

Option 1: have all the receivers in the same zone, like zone 1



Option 2: have each receiver in a different zone, like zone 1, 2, 3 or 4



How to stop running mode of single color LED light caused by RGBW sender interference:

1. When pairing single color LED light to a single color remote, it might be interfered and paired by nearby RGBW senders, which might control the single color light into running mode. The running mode can not be stopped by the paired single color remote or by delete pairing.
2. Then we need this remote, and pair the remote to the receiver via above "Pair with RF receiver (Method 2)", then touch the color wheel to stop the running mode.
3. Then delete pairing and pair the receiver to the single color remote again, it can be controlled by the remote again.

TELECOMMANDES RF (pour driver RF)

- **4/8 zones : possibilité de créer 4 ou 8 programmes avec la même télécommande.**
- **Pour associer la télécommande RF avec le driver RF :**

1. Brancher le ruban LED puis mettre sous tension le driver
2. Allumer la télécommande RF (appui sur le bouton rouge ON) : son voyant rouge s'allume,
3. Sur le driver RF, appuyer rapidement 3 fois sur le bouton « learning key »,
4. Juste après, sur la télécommande, appuyer brièvement sur la touche 1 (de 1 à 8 au choix) puis une deuxième fois en la maintenant appuyer jusqu'au clignotement unique (flash) du bandeau LED, relâcher la touche.
5. Association réussie !