



### Contact characteristics

Number of poles	Nr.	4
Rated insulation voltage $U_i$ IEC/EN	V	690
Rated impulse withstand voltage $U_{imp}$	kV	6
Operational frequency	min	Hz 25
	max	Hz 400
IEC Conventional free air thermal current $I_{th} \leq 40^\circ\text{C}$	A	10
Protection fuse	gG (IEC)	A 16
	Tightening torque for terminals	min Nm 0.8
	max Nm 1	
	min lbin 9	
	max lbin 9	
Tightening torque for coil terminal	min	Nm 0.8
	max	Nm 1
	min	lbin 9
	max	lbin 9
Max number of wires simultaneously connectable	Nr.	2
Conductor section	AWG/Kcmil	max 12
	Flexible w/o lug conductor section	min
max		mm <sup>2</sup> 2.5
Flexible c/w lug conductor section	min	mm <sup>2</sup> 1.5
	max	mm <sup>2</sup> 2.5
Flexible with insulated spade lug conductor section	min	mm <sup>2</sup> 1.5
	max	mm <sup>2</sup> 2.5
Power terminal protection according to IEC/EN 60529		IP20

### Mechanical features

Operating position	normal	Vertical plan
	allowable	$\pm 30^\circ$
Fixing		Screw / DIN rail 35mm
Weight	g	200

### Auxiliary contact characteristics

Thermal current $I_{th}$	A	10
IEC/EN 60947-5-1 designation		A600 - Q600
Operating current AC15		

	230V	A	3
	400V	A	1.9
	500V	A	1.4
Operating current DC12			
	110V	A	2.9
Operating current DC13			
	24V	A	2.9
	48V	A	1.4
	60V	A	1.2
	110V	A	0.6
	125V	A	0.55
	220V	A	0.3
	600V	A	0.1
<b>Operations</b>			
Mechanical life		cycles	20000000
<b>Safety related data</b>			
Performance level B10d according to EN/ISO 13489-1		mechanical load	cycles 20000000
EMC compatibility			YES
<b>DC coil operating</b>			
DC rated control voltage		V	110
DC operating voltage			
pick-up		min	%Us 75
		max	%Us 115
drop-out		min	%Us 10
		max	%Us 20
Average coil consumption $\leq 20^{\circ}\text{C}$		in-rush	W 3.2
		holding	W 3.2
<b>Max cycles frequency</b>			
Mechanical operation		cycles/h	3600
<b>Operating times</b>			
Average time for $U_s$ control			
in AC			
Closing NO		min	ms 12
		max	ms 21
Opening NO		min	ms 9
		max	ms 18
Closing NC		min	ms 17
		max	ms 26
Opening NC		min	ms 7
		max	ms 17
in DC			
Closing NO		min	ms 18
		max	ms 25
Opening NO		min	ms 2

Closing NC	max	ms	3
	min	ms	3
Opening NC	max	ms	5
	min	ms	11
	max	ms	17

**UL technical data**

Rated operational voltage AC (UL) V 600

General USE

Contactor

AC current A 10

Contact rating of auxiliary contacts according to UL A600 - Q600

**Ambient conditions**

Temperature

Operating temperature

min °C -50  
max °C +70

Storage temperature

min °C -60  
max °C +80

Max altitude

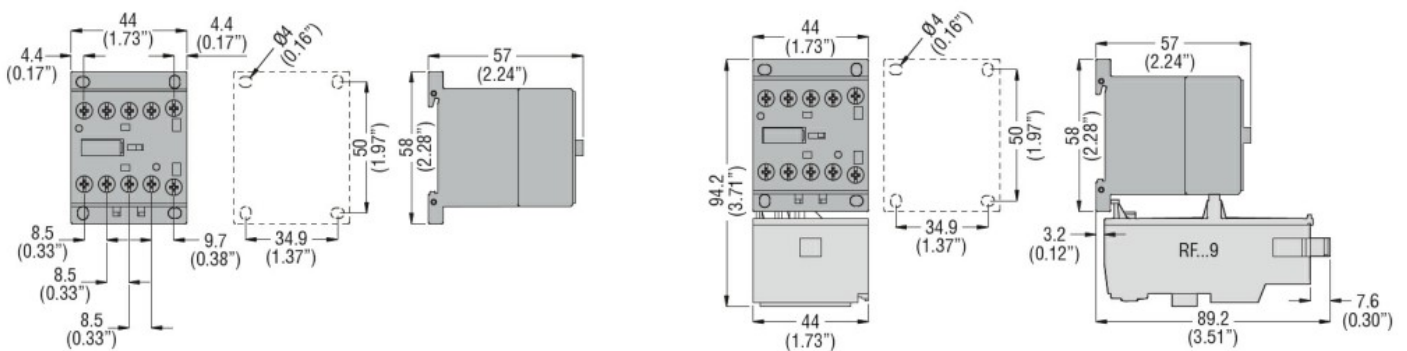
m 3000

**Resistance & Protection**

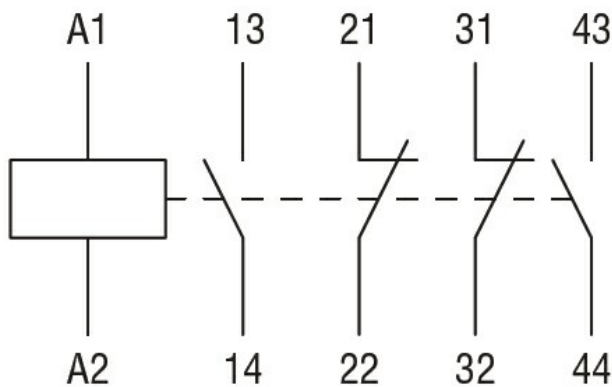
Pollution degree

3

**Dimensions**



**Wiring diagrams**



**Certifications and compliance**

Compliance

CSA C22.2 n° 60947-1

CSA C22.2 n° 60947-5-1

IEC/EN 60335-2-89

IEC/EN 60947-1

---

IEC/EN 60947-5-1

---

UL 60947-1

---

UL 60947-5-1

Certificates

---

CSA C22.2 n. 60335-2-40:22 LZGH A2L

---

CSA C22.2 No. 60335-2-89:21 LZGH A2L

---

cULus

---

EAC

---

UL 60335-2-40 LZGH A2L

---

UL 60335-2-89 LZGH A2L

ETIM classification

ETIM 8.0

EC000196 -  
Contactor relay