



General characteristics																				
Description	Compact, 1 operating threshold																			
Residual operation characteristic	Type A																			
N° of operating threshold	1																			
Control circuit																				
Toroidal transformer	Incorporated diam. 110mm/4.33"																			
Adjustments	<table border="1"> <tr> <td rowspan="3">Tripping set-point ($I\Delta n$)</td> <td>(x0.1)</td> <td>A</td> <td>0.025...0.25</td> </tr> <tr> <td>(x1)</td> <td>A</td> <td>0.25...2.5</td> </tr> <tr> <td>(x10)</td> <td>A</td> <td>2.5...25</td> </tr> <tr> <td rowspan="2">Tripping delay time</td> <td>(tx1)</td> <td>s</td> <td>0.02...0.5</td> </tr> <tr> <td>(tx10)</td> <td>s</td> <td>0.2...5</td> </tr> </table>			Tripping set-point ($I\Delta n$)	(x0.1)	A	0.025...0.25	(x1)	A	0.25...2.5	(x10)	A	2.5...25	Tripping delay time	(tx1)	s	0.02...0.5	(tx10)	s	0.2...5
Tripping set-point ($I\Delta n$)	(x0.1)	A	0.025...0.25																	
	(x1)	A	0.25...2.5																	
	(x10)	A	2.5...25																	
Tripping delay time	(tx1)	s	0.02...0.5																	
	(tx10)	s	0.2...5																	
Selection of multiplier for $I\Delta n$ and t	By dip switches																			
Resetting	Configurable automatic or manual by button on front																			
Test Button	Yes																			
Shunt circuit control	No																			
Auxiliary supply																				
Auxiliary rated supply voltage U_s	24-48VAC/DC																			
Output contacts	1																			
Rated frequency	Hz	50...60																		
Power consumption Max	VA	3																		
Relay outputs																				
Relay state	Normally de-energised																			
Contact arrangement	1 changeover SPDT (trip)																			
Rated contact capacity IEC I_{th}	5A - 250VAC																			
Insulations																				
Power frequency withstand voltage	kV	2.5kV for 60s																		
Indications																				
Auxiliary voltage available (ON)	Green LED																			
Relay tripping (TRIP)	Red LED																			
Connections																				
Terminals type	Fixed																			
Tightening torque for terminals	<table border="1"> <tr> <td>max</td> <td>Nm</td> <td colspan="2">0.5</td> </tr> <tr> <td>max</td> <td>lbin</td> <td colspan="2">4.5</td> </tr> </table>			max	Nm	0.5		max	lbin	4.5										
max	Nm	0.5																		
max	lbin	4.5																		

Conductor section

AWG/Kcmil

min	24
max	12

IEC

min	mm ²	0.2
max	mm ²	2.5

Operations

Mechanical life cycles 50000000

Electrical life cycles 300000

Ambient conditions

Temperature

Operating temperature

min	°C	-10
max	°C	+60

Storage temperature

min	°C	-20
max	°C	+80

Relative humidity % ≤90%

Housing

Material Self-extinguishing polycarbonate

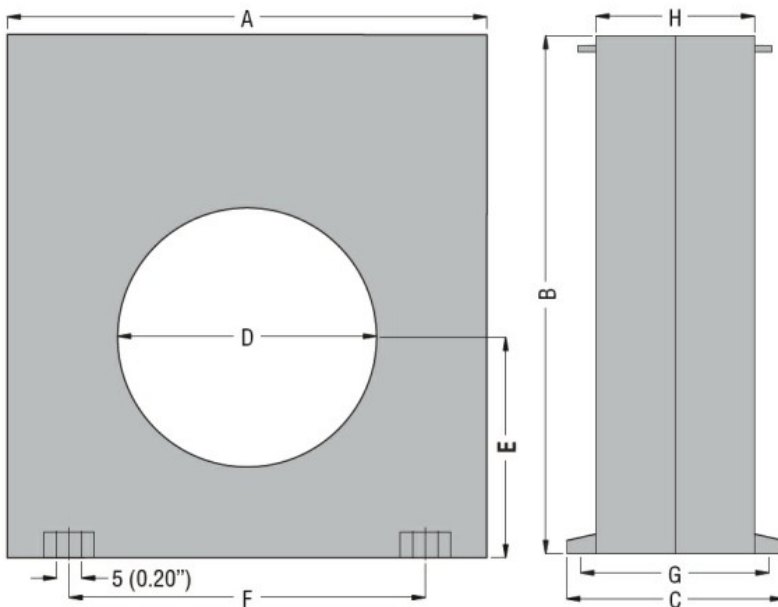
Mounting 35mm DIN rail

Degree of protection IP20 terminals

Dimensions (W x H x D) mm 150x160x70

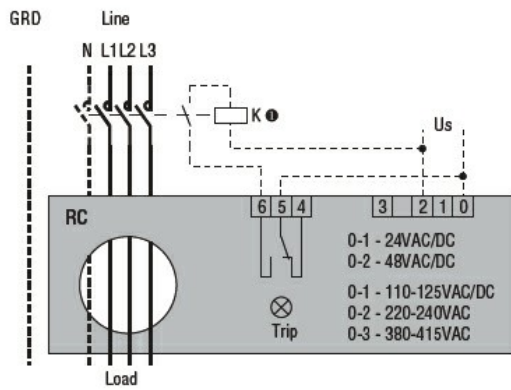
Weight g 485

Dimensions



TYPE	A	B	C	D	E	F	G	H
RC35	100 (3.94")	110 (4.33")	70 (2.75")	35 (1.38")	47 (1.85")	60 (2.36")	60 (2.36")	50 (1.97")
RC60	100 (3.94")	110 (4.33")	70 (2.75")	60 (2.36")	47 (1.85")	60 (2.36")	60 (2.36")	50 (1.97")
RC80	150 (5.90")	160 (6.30")	70 (2.75")	80 (3.15")	70 (2.75")	110 (4.33")	60 (2.36")	50 (1.97")
RC110	150 (5.90")	160 (6.30")	70 (2.75")	110 (4.33")	70 (2.75")	110 (4.33")	60 (2.36")	50 (1.97")

Wiring diagrams



Certifications and compliance

Compliant with standards

IEC/EN 60947-2

Certificates

EAC

ETIM classification

ETIM 8.0

EC001445 -
Residual current
monitoring relay