



### Electrical features

IEC Conventional free air thermal current $I_{th} \leq 40^{\circ}\text{C}$	A	20
Rated insulation voltage $U_i$ IEC/EN	V	440
Rated impulse withstand voltage $U_{imp}$	kV	4
Minimum switching capacity		$\geq 10\text{V} \geq 100\text{mA}$
Power dissipation per pole (average value) $I_{th}$	W	1.7

### Control circuit

Auxiliary rated supply voltage $U_s$	24VAC		
Auxiliary contacts	NO	Nr.	1
	NC	Nr.	1
Average coil consumption $\leq 20^{\circ}\text{C}$	in-rush	W	18/13

### Operating voltage

pick-up

min	% $U_s$	85
max	% $U_s$	110

### Operating times

Average time

Closing NO

min	ms	5
max	ms	20

Opening NO

min	ms	5
max	ms	20

### Operations

Mechanical life	cycles	3000000
Electrical life AC-3	cycles	300000
Electrical life AC1	cycles	200000

### Ambient conditions

Operating temperature

min	$^{\circ}\text{C}$	-5
max	$^{\circ}\text{C}$	55

Storage temperature

min	$^{\circ}\text{C}$	-30
max	$^{\circ}\text{C}$	80

Max altitude

m 2000

### Mechanical features

Fixing

DIN rail 35mm

Tightening torque for coil terminal

max	Nm	0.6
max	lbin	0.6

Tightening torque for terminals

max	Nm	1.2
max	lbin	0.9

Conductor section

Coil terminal

min	mm <sup>2</sup>	1
max	mm <sup>2</sup>	2.5

Power terminal

min	mm <sup>2</sup>	1
max	mm <sup>2</sup>	10

Terminals tool

PZ2

Weight

g 135

**Resistance & Protection**

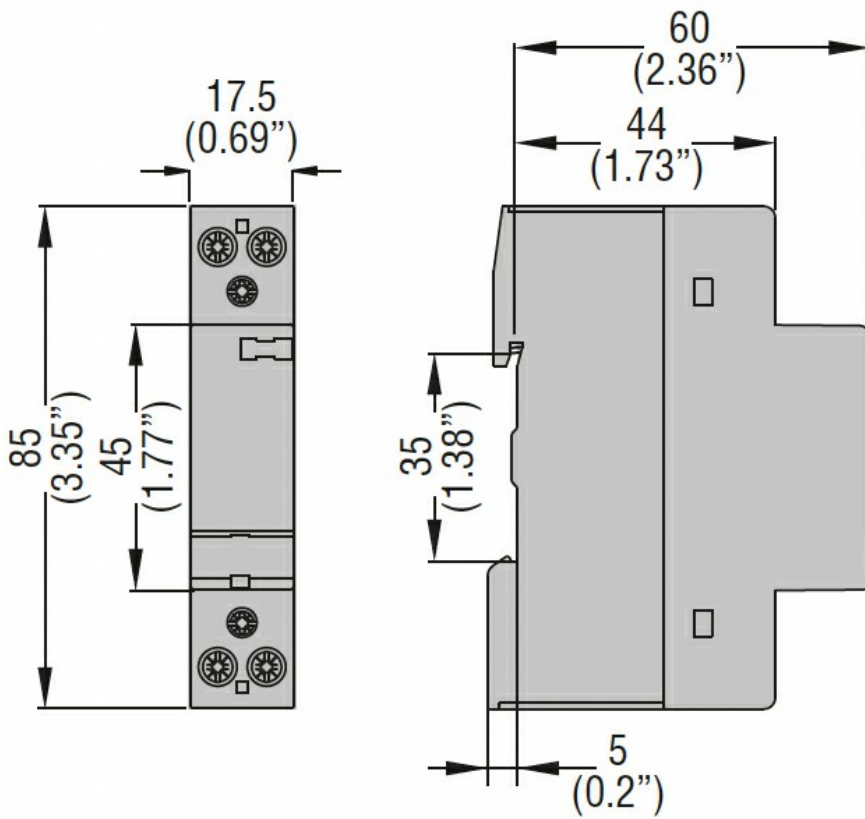
Frontal IP degree

IP20

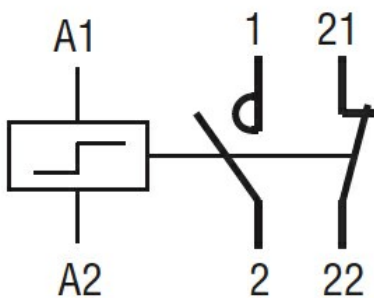
Pollution degree

3

**Dimensions**



**Wiring diagrams**



**Certifications and compliance**

Compliance

IEC/EN/BS 60669-1

---

IEC/EN/BS 60669-2-2

---

IEC/EN/BS 60947-1

---

IEC/EN/BS 60947-4-1

---

IEC/EN/BS 60947-5-1

---

IEC/EN/BS 61095

---

Certificates

EAC

ETIM classification

ETIM 8.0

EC000066 -  
Power contactor,  
AC switching