



Electrical features

IEC Conventional free air thermal current $I_{th} \leq 40^{\circ}C$	A	32
Rated insulation voltage U_i IEC/EN	V	440
Rated impulse withstand voltage U_{imp}	kV	4
Minimum switching capacity		$\geq 10V \geq 100mA$
Power dissipation per pole (average value) I_{th}	W	2.5

Control circuit

Auxiliary rated supply voltage U_s		230VAC
Auxiliary contacts	NO	Nr. 2
Average coil consumption $\leq 20^{\circ}C$	in-rush	W 18/13
Operating voltage		
pick-up	min	% U_s 85
	max	% U_s 110

Operating times

Average time			
Closing NO	min	ms	5
	max	ms	20
Opening NO	min	ms	5
	max	ms	20

Operations

Mechanical life	cycles	3000000
Electrical life AC-3	cycles	500000
Electrical life AC1	cycles	150000

Ambient conditions

Operating temperature	min	$^{\circ}C$	-5
	max	$^{\circ}C$	55
Storage temperature	min	$^{\circ}C$	-30
	max	$^{\circ}C$	80
Max altitude		m	2000

Mechanical features

Fixing			DIN rail 35mm
Tightening torque for coil terminal	max	Nm	0.6
	max	Ibin	0.6
Tightening torque for terminals	max	Nm	1.2
	max	Ibin	0.9

Conductor section

Coil terminal

min	mm ²	1
max	mm ²	2.5

Power terminal

min	mm ²	1
max	mm ²	10

Terminals tool

PZ2

Weight

g 135

Resistance & Protection

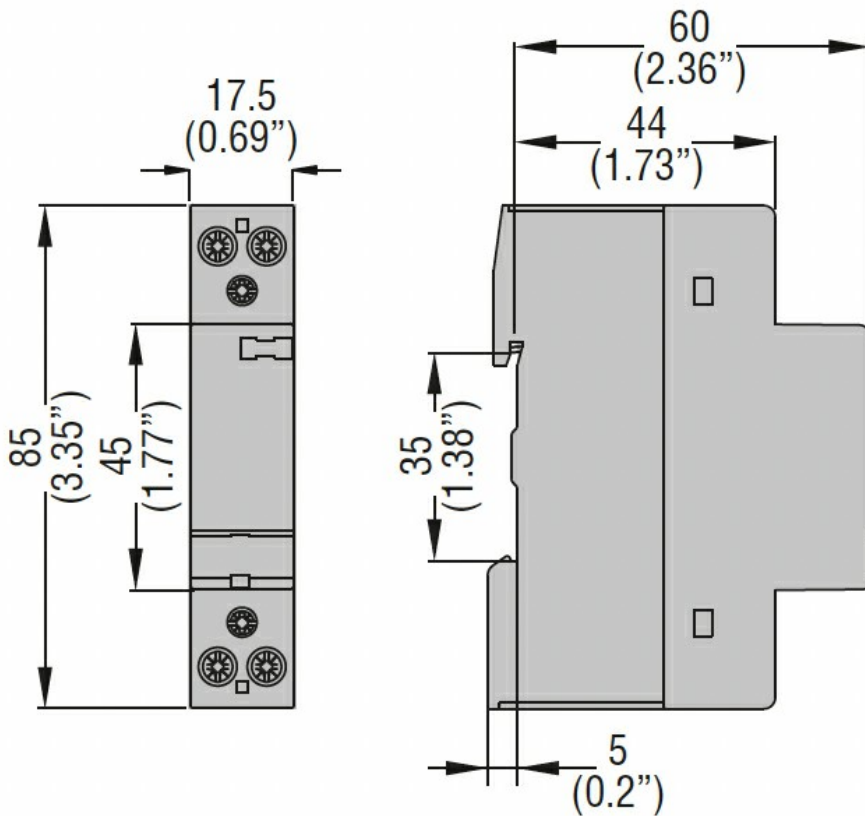
Frontal IP degree

IP20

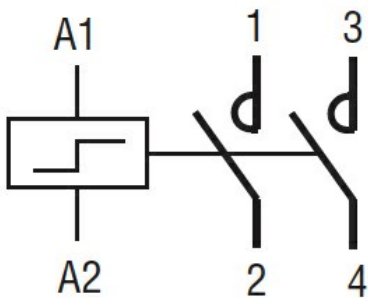
Pollution degree

3

Dimensions



Wiring diagrams



Certifications and compliance

Compliance

- IEC/EN/BS 60669-1
- IEC/EN/BS 60669-2-2
- IEC/EN/BS 60947-1

IEC/EN/BS 60947-4-1

IEC/EN/BS 60947-5-1

IEC/EN/BS 61095

Certificates

EAC

ETIM classification

ETIM 8.0

EC000066 -
Power contactor,
AC switching