



### General characteristics

Rated voltage	V	400
Operating voltage range		340...440
Rated frequency	Hz	50/60
Operating frequency range	Hz	45...65
Rated current (Ie)	A	11
Step power at	400VAC	kvar 7.5
Peak inverse voltage (PIV)	VAC	1800
Number of controlled phases	Nr.	2

Control circuit		12-24VDC input or free-voltage input or via RS485 serial port (with optional card EXC1042 in combination with controller DCRG8F + EXP1012)
-----------------	--	--

### Auxiliary supply

Rated auxiliary supply voltage Us	AC		
		min	VAC 100
		Max	VAC 240
Auxiliary rated frequency		Hz	50/60
Power consumption Max		VA	11.8
Power dissipation Max		W	4.6

### Control input

Terminals	CONTROL +/-
Rated voltage	12-24VDC
Operating range	8...30VDC

### Digital inputs

Terminals	C-IN1
Applied voltage at contact (internal)	5VDC
Input current	mA ≤10
Low input signal	VDC ≤0.8
High input signal	VDC ≥3.2
Input signal delay	ms ≥50

### NTC probe input

Terminals	NTC-NTC
Sensor type	NTC (ordering code NTC01)
Measuring range	°C -25...+85
Maximum connection length	mt 3

### Fan power supply

Terminals				FAN +/-
Supply voltage (internal)				5VDC (provided by DCTL)
Fan type				1 built-in fan type EXP8004
<b>Relay outputs</b>				
Number of relay output	Nr.			1
Contact arrangement				1 C/O-SPDT
Rated current				NO contact: AC1 5A 250VAC / 5A 30VDC
				NC contact: AC1 3A 250VAC / 3A 30VDC
UL/CSA and IEC/EN 60947-5-1 designation				D300
Maximum switching voltage	VAC			250
Electrical life (with rated load)	cycles			NO contact: 10x10 <sup>3</sup>
				NC contact: 20x10 <sup>3</sup>
Mechanical life	cycles			10 <sup>7</sup>
<b>Insulations</b>				
Rated insulation voltage Ui IEC/EN	V			480
Rated impulse withstand voltage Uimp	kV			4
<b>Connections - power terminals</b>				
Type of terminal				Fixed - double lock clamp
Conductor cross section	min	mm <sup>2</sup>	2 x 2.5	
	Max	mm <sup>2</sup>	2 x 35	
	min	AWG	2 x 18	
	Max	AWG	2 x 2	
	Tightening torque (Max)			
		Nm	4-5	
		lbin/lbft	2.95-3.69 lbft	
<b>Connections - relay output</b>				
Type of terminal				Screw
Conductor cross section	min	mm <sup>2</sup>	0.2	
	Max	mm <sup>2</sup>	4	
	min	AWG	26	
	Max	AWG	10	
	Tightening torque (Max)			
		Nm	0.8	
		lbin	7	
<b>Connections - fan and digital input</b>				
Type of terminal				Screw
Conductor cross section	min	mm <sup>2</sup>	0.2	
	Max	mm <sup>2</sup>	2.5	
	min	AWG	24	
	Max	AWG	12	
	Tightening torque (Max)			
		Nm	0.44	

lbin 4

**Ambient conditions**

Temperature

Operating temperature

min	°C	-20
max	°C	+45°C without derating (up to 55°C with derating)

Storage temperature

min	°C	-30
max	°C	+80

Relative humidity

% <80%

Maximum Pollution degree

2

Overvoltage category

III

Max altitude

m 2000m without derating

Climatic sequence

Z/ABDM (IEC/EN 60068-2-61)

Shock resistance

15g (IEC/EN 60068-2-27)

Vibration resistance

0.7g (IEC/EN 60068-2-6)

**Housing**

Execution

Internal panel version

Material

Polycarbonate

Mounting

Screw fixing or DIN-rail (IEC/EN 60715) with optional accessory EXP8003

Degree of protection

IP00

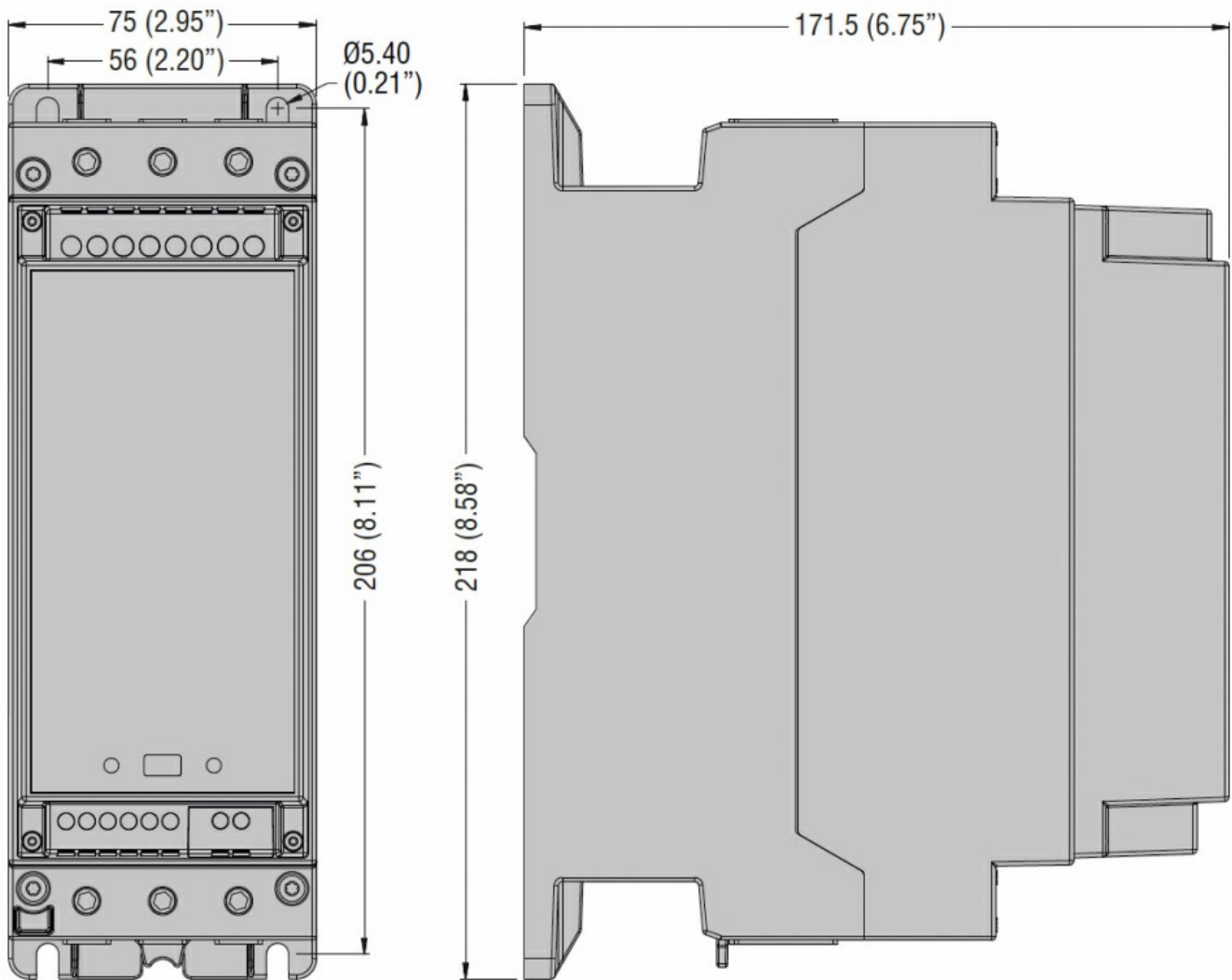
Dimensions (W x H x D)

mm 75 x 218 x 171.5

Weight

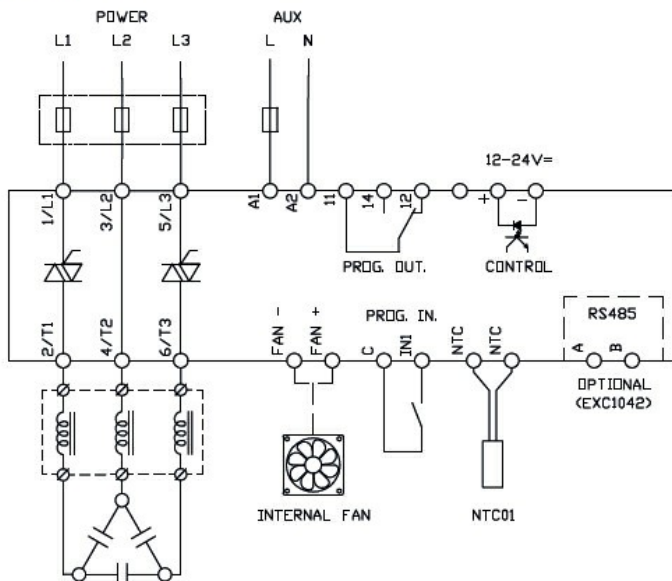
g 1740

**Dimensions**



Wiring diagrams

**DCTL**



Certifications and compliance

Compliance

IEC/EN 60947-4-3

IEC/EN 61000-6-2

IEC/EN 61000-6-4

Certificates

cULus

ETIM classification

ETIM 8.0

EC002055 -  
Solid state relay