



General characteristics			
Rated voltage	V	400	
Operating voltage range		340...440	
Rated frequency	Hz	50/60	
Operating frequency range	Hz	45...65	
Rated current (Ie)	A	43	
Step power at	400VAC	kvar	30
Peak inverse voltage (PIV)	VAC	1800	
Number of controlled phases	Nr.	2	
Control circuit		12-24VDC input or free-voltage input or via RS485 serial port (with optional card EXC1042 in combination with controller DCRG8F + EXP1012)	
Auxiliary supply			
Rated auxiliary supply voltage Us	AC		
		min	VAC 100
		Max	VAC 240
Auxiliary rated frequency	Hz	50/60	
Power consumption Max	VA	11.8	
Power dissipation Max	W	4.6	
Control input			
Terminals		CONTROL +/-	
Rated voltage		12-24VDC	
Operating range		8...30VDC	
Digital inputs			
Terminals		C-IN1	
Applied voltage at contact (internal)		5VDC	
Input current	mA	≤10	
Low input signal	VDC	≤0.8	
High input signal	VDC	≥3.2	
Input signal delay	ms	≥50	
NTC probe input			
Terminals		NTC-NTC	
Sensor type		NTC (ordering code NTC01)	
Measuring range	°C	-25...+85	
Maximum connection length	mt	3	
Fan power supply			

Terminals				FAN +/-
Supply voltage (internal)				5VDC (provided by DCTL)
Fan type				1 built-in fan type EXP8004
<b>Relay outputs</b>				
Number of relay output	Nr.			1
Contact arrangement				1 C/O-SPDT
Rated current				NO contact: AC1 5A 250VAC / 5A 30VDC
				NC contact: AC1 3A 250VAC / 3A 30VDC
UL/CSA and IEC/EN 60947-5-1 designation				D300
Maximum switching voltage	VAC			250
Electrical life (with rated load)	cycles			NO contact: 10x10 <sup>3</sup>
				NC contact: 20x10 <sup>3</sup>
Mechanical life	cycles			10 <sup>7</sup>
<b>Insulations</b>				
Rated insulation voltage Ui IEC/EN	V			480
Rated impulse withstand voltage Uimp	kV			4
<b>Connections - power terminals</b>				
Type of terminal				Fixed - double lock clamp
Conductor cross section	min	mm <sup>2</sup>	2 x 2.5	
	Max	mm <sup>2</sup>	2 x 35	
	min	AWG	2 x 18	
	Max	AWG	2 x 2	
	Tightening torque (Max)			
		Nm	4-5	
		lbin/lbft	2.95-3.69 lbft	
<b>Connections - relay output</b>				
Type of terminal				Screw
Conductor cross section	min	mm <sup>2</sup>	0.2	
	Max	mm <sup>2</sup>	4	
	min	AWG	26	
	Max	AWG	10	
	Tightening torque (Max)			
		Nm	0.8	
		lbin	7	
<b>Connections - fan and digital input</b>				
Type of terminal				Screw
Conductor cross section	min	mm <sup>2</sup>	0.2	
	Max	mm <sup>2</sup>	2.5	
	min	AWG	24	
	Max	AWG	12	
	Tightening torque (Max)			
		Nm	0.44	

lbin 4

**Ambient conditions**

Temperature

Operating temperature

min	°C	-20
max	°C	+45°C without derating (up to 55°C with derating)

Storage temperature

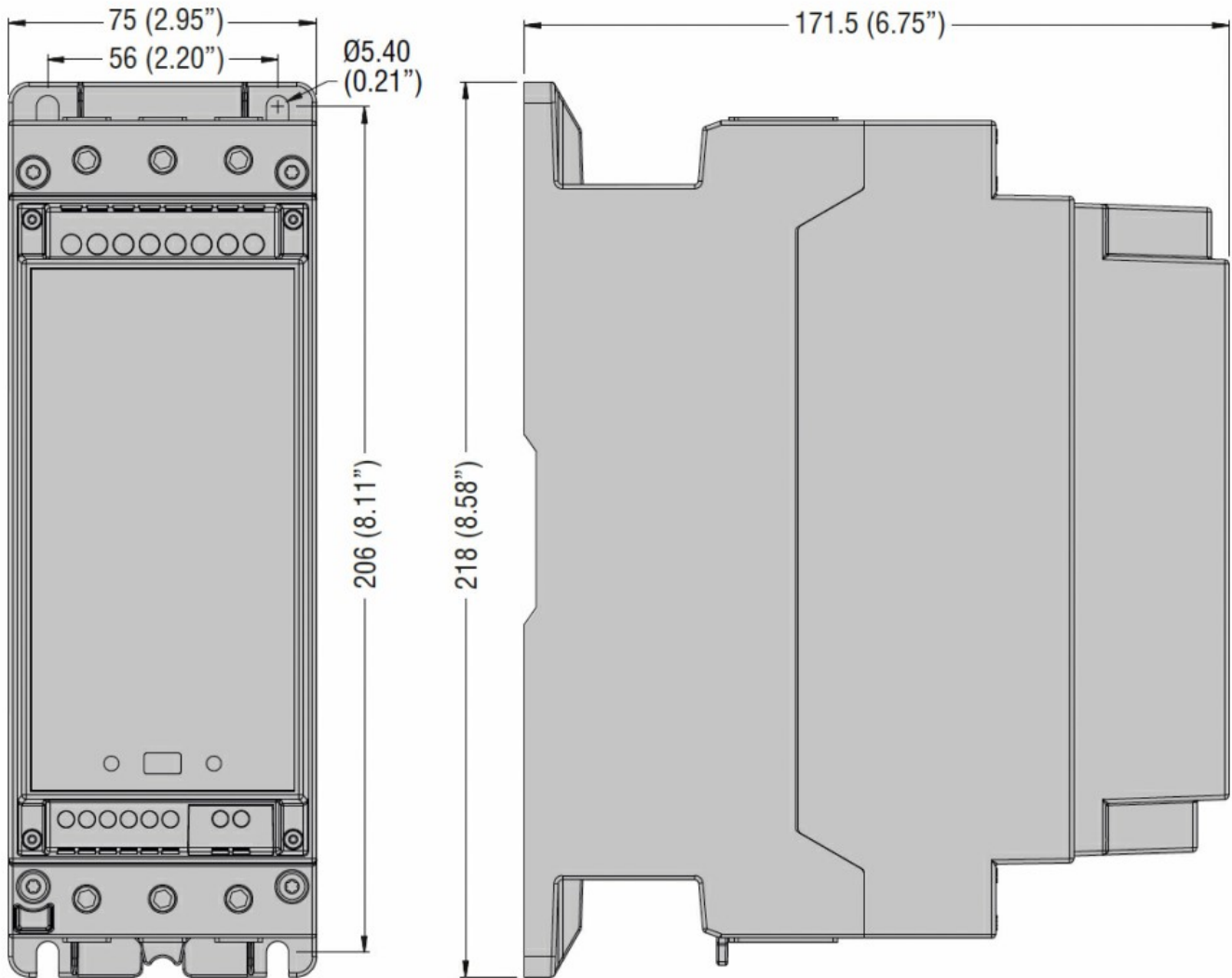
min	°C	-30
max	°C	+80

Relative humidity	%	<80%
Maximum Pollution degree		2
Overvoltage category		III
Max altitude	m	2000m without derating
Climatic sequence		Z/ABDM (IEC/EN 60068-2-61)
Shock resistance		15g (IEC/EN 60068-2-27)
Vibration resistance		0.7g (IEC/EN 60068-2-6)

**Housing**

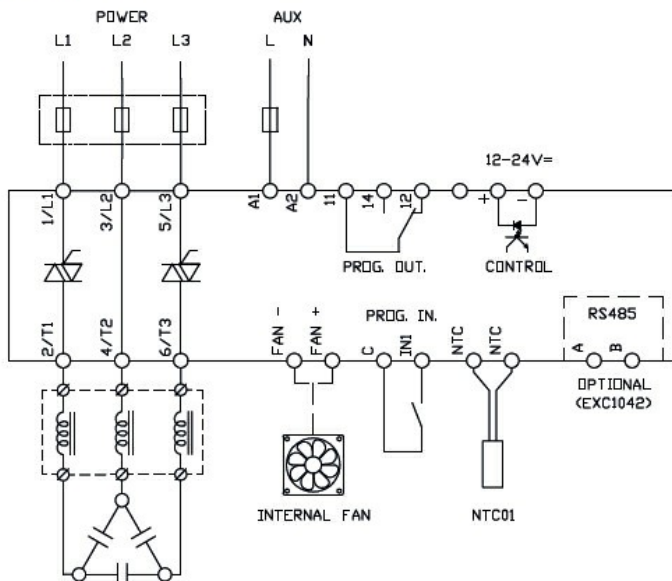
Execution		Internal panel version
Material		Polycarbonate
Mounting		Screw fixing or DIN-rail (IEC/EN 60715) with optional accessory EXP8003
Degree of protection		IP00
Dimensions (W x H x D)	mm	75 x 218 x 171.5
Weight	g	1740

**Dimensions**



Wiring diagrams

**DCTL**



Certifications and compliance

Compliance

IEC/EN 60947-4-3

IEC/EN 61000-6-2

IEC/EN 61000-6-4

Certificates

cULus

ETIM classification

ETIM 8.0

EC002055 -  
Solid state relay