



Product designation

Product type designation

Type of fuse

Number of poles

Operating voltage type

Switch
disconnecter with
fuse
GE
BS
Nr. 3
AC

Contact characteristics

IEC Conventional free air thermal current I _{th}	A	200
Rated insulation voltage U _i IEC/EN	V	800
Rated impulse withstand voltage U _{imp}	kV	8
Operating current I _e		

AC21A

400V	A	200
500V	A	200
690V	A	200

AC22A

400V	A	200
500V	A	200
690V	A	200

AC23A

400V	A	200
500V	A	200
690V	A	160

Power dissipation per pole max	W	13
--------------------------------	---	----

Rated operational power AC23A		
400V	kW	110
690V	kW	132

Conditional short-circuit current (rms)	kA	100
---	----	-----

Specific let through energy I ₂ t	kA ² s	0.478
--	-------------------	-------

Making capacity AC23A 400V	A	2000
----------------------------	---	------

Breaking capacity AC23A 400V	A	1600
------------------------------	---	------

Mechanical life	cycles	10000
-----------------	--------	-------

Electrical life AC21A	cycles	1000 (AC23A 400V)
-----------------------	--------	-------------------

Mechanical features

Operating position

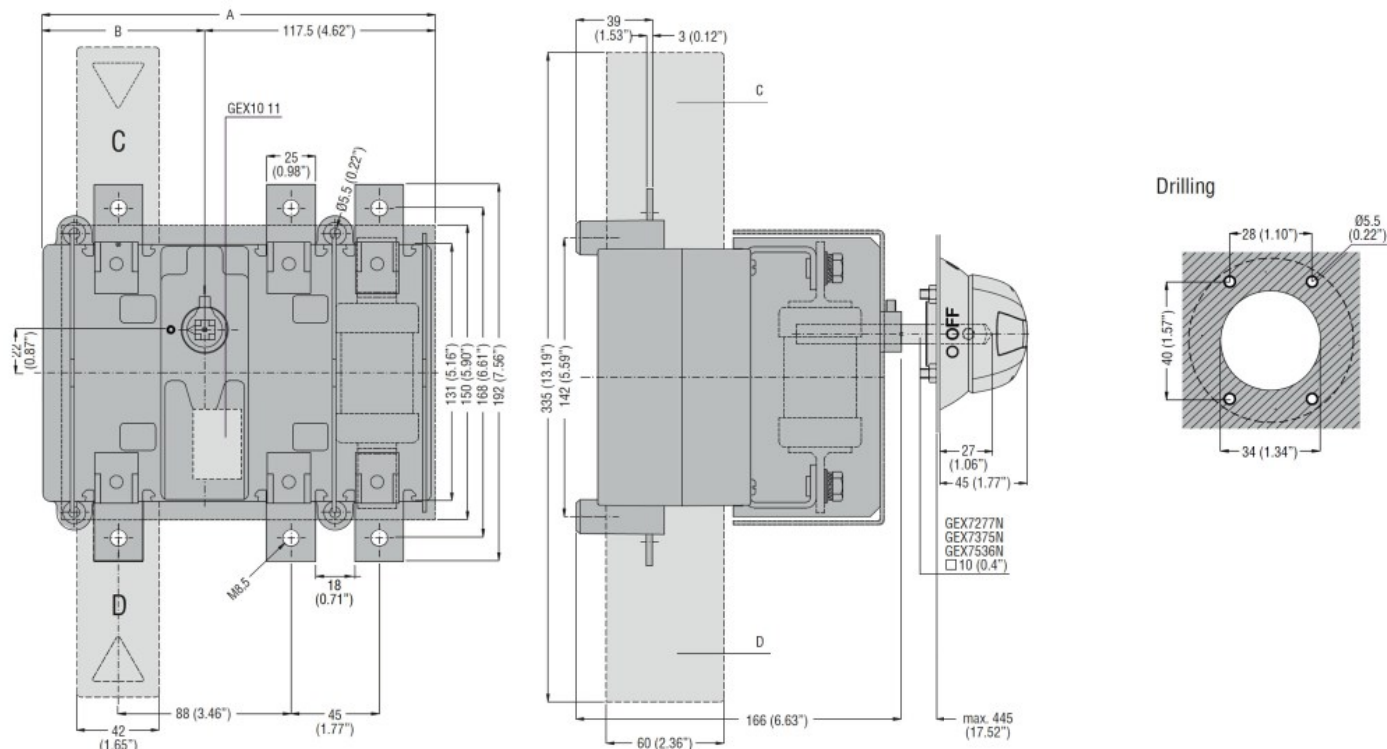
normal
allowable
Vertical plan
Any

Fixing		Screw
--------	--	-------

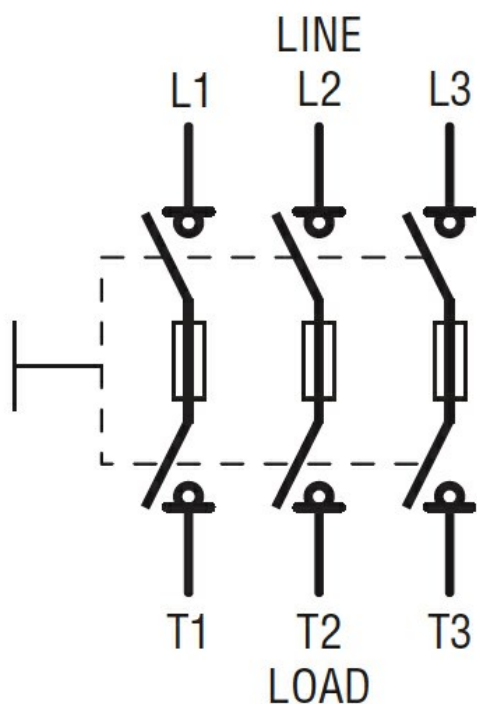
Terminals	type screw	Bar M8
-----------	---------------	-----------

Tightening torque for terminals	max max	Nm lbin	13 10
---------------------------------	------------	------------	----------

Bar dimensions max	25x3		
Ambient conditions			
Operating temperature	min	°C	-25
	max	°C	55
Storage temperature	min	°C	-40
	max	°C	70
Max altitude	m		3000
Resistance & Protection			
Frontal IP degree	IP20		
Pollution degree	3		
Dimensions			



Wiring diagrams



Certifications and compliance

Compliance

IEC/EN 60947-1

IEC/EN 60947-3

Certifications

EAC

ETIM classification

ETIM 8.0

EC000216 -
Switch
disconnector