



Product designation

Product type designation

Number of poles

Operating voltage type

Switch
disconnecter
GE
Nr. 3
AC

Contact characteristics

IEC Conventional free air thermal current I _{th}	A	315
Rated insulation voltage U _i IEC/EN	V	1000
Rated impulse withstand voltage U _{imp}	kV	8

Operating current I_e

AC21A

400V	A	315
500V	A	315
690V	A	250

AC22A

400V	A	315
500V	A	315
690V	A	200

AC23A

400V	A	315
500V	A	250
690V	A	160

Power dissipation per pole max	W	6.5
--------------------------------	---	-----

Rated operational power AC23A

400V	kW	174
690V	kW	153

Rated short time current (1s) I _{cs} (rms)	kA	12
---	----	----

Conditional short-circuit current (rms)	kA	100
---	----	-----

Short-circuit protection with fuse	Class/A	gG315
------------------------------------	---------	-------

Making capacity AC23A 400V	A	3150
----------------------------	---	------

Breaking capacity AC23A 400V	A	2520
------------------------------	---	------

Mechanical life	cycles	20000
-----------------	--------	-------

Electrical life AC21A	cycles	1000 (AC23A 400V)
-----------------------	--------	-------------------

Mechanical features

Operating position

normal
allowable
Vertical plan
Any

Fixing	Screw
--------	-------

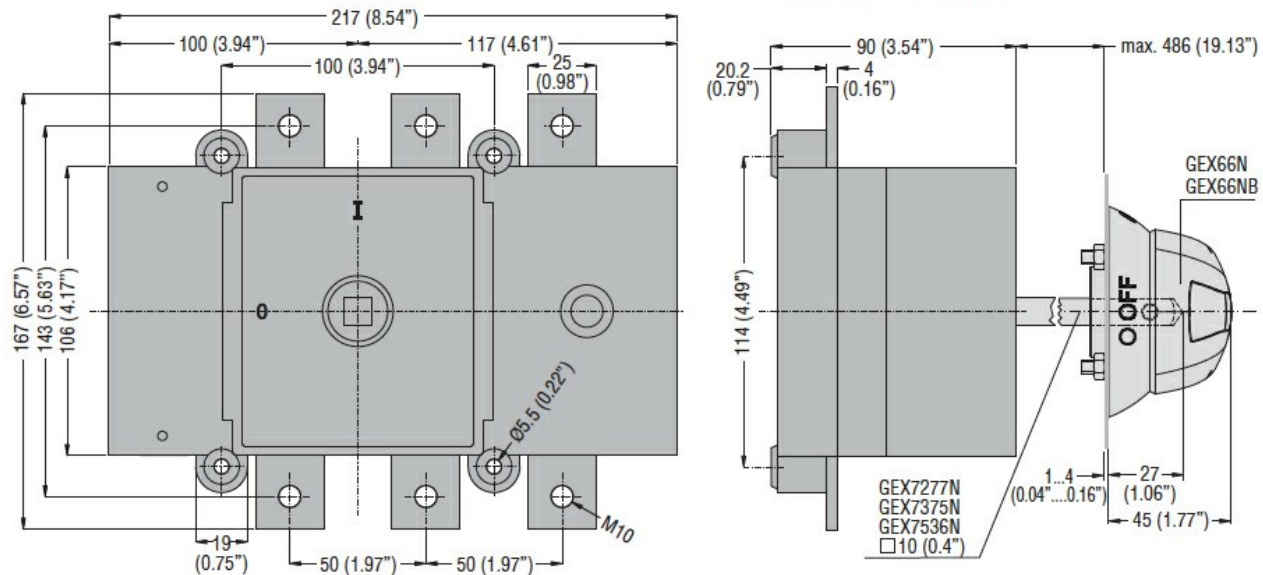
Terminals	type screw	Bar M10
-----------	---------------	------------

Tightening torque for terminals

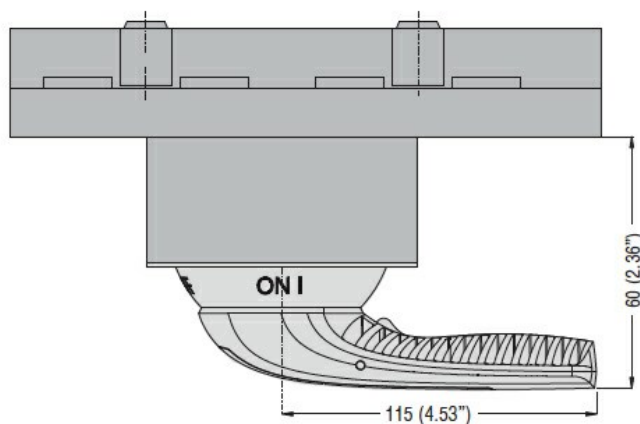
max	Nm	18
max	lbin	10

Bar dimensions max	25x4		
Ambient conditions			
Operating temperature	min	°C	-25
	max	°C	55
Storage temperature	min	°C	-40
	max	°C	70
Max altitude	m		3000
Resistance & Protection			
Frontal IP degree	IP20		
Pollution degree	3		
Dimensions			

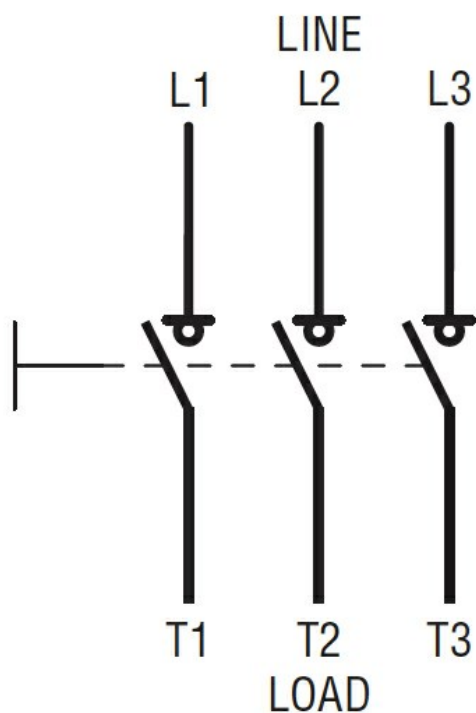
Door coupling version with handle
GEX66N - GEX66NB



Direct operating version with handle
GEX66ND



Wiring diagrams



Certifications and compliance

Compliance

IEC/EN 60947-1

IEC/EN 60947-3

Certifications

EAC

ETIM classification

ETIM 8.0

EC000216 -
Switch
disconnecter