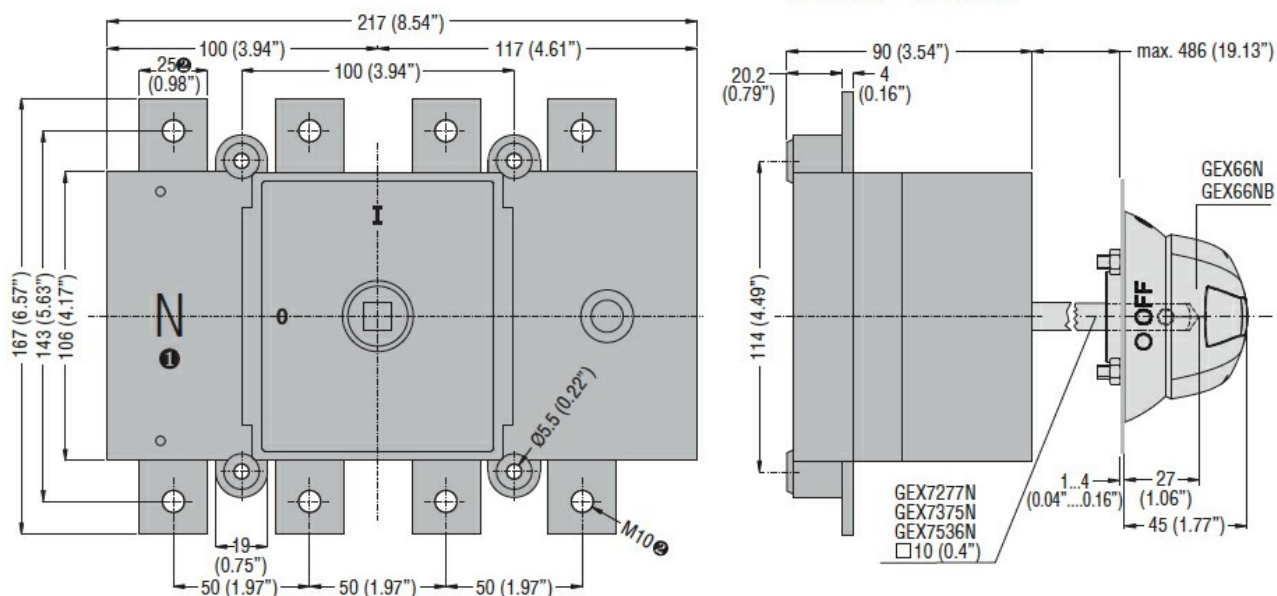




Product designation			Switch disconnecter	
Product type designation			GE	
Number of poles			Nr.	4
Operating voltage type			AC	
Contact characteristics				
IEC Conventional free air thermal current Ith			A	400
Rated insulation voltage Ui IEC/EN			V	1000
Rated impulse withstand voltage Uimp			kV	8
Operating current Ie				
AC21A				
			400V	A 400
			500V	A 400
			690V	A 250
AC22A				
			400V	A 400
			500V	A 400
			690V	A 200
AC23A				
			400V	A 400
			500V	A 315
			690V	A 160
Power dissipation per pole max			W	10.5
Rated operational power AC23A				
			400V	kW 220
			690V	kW 153
Rated short time current (1s) Icw (rms)			kA	12
Conditional short-circuit current (rms)			kA	100
Short-circuit protection with fuse			Class/A	gG400
Making capacity AC23A 400V			A	4000
Breaking capacity AC23A 400V			A	3200
Mechanical life			cycles	20000
Electrical life AC21A			cycles	1000 (AC23A 400V)
Mechanical features				
Operating position			normal allowable	Vertical plan Any
Fixing			Screw	
Terminals			type screw	Bar M10
Tightening torque for terminals				
			max	Nm 24
			max	lbin 10

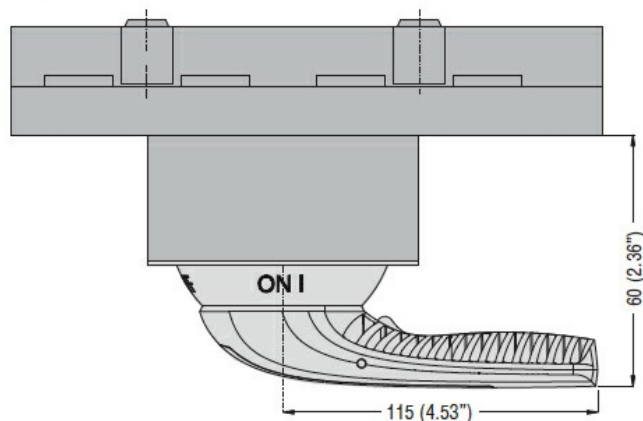
Bar dimensions max	25x4		
Ambient conditions			
Operating temperature	min	°C	-25
	max	°C	55
Storage temperature	min	°C	-40
	max	°C	70
Max altitude	m		3000
Resistance & Protection			
Frontal IP degree	IP20		
Pollution degree	3		
Dimensions			

Door coupling version with handle
GEX66N - GEX66NB



- ❶ Not indicated on GE... DT4 type.
- ❷ 20mm (0.79'') and M8 for GE0125 DT4 type.

Direct operating version with handle
GEX66ND

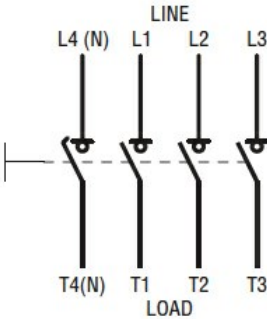


Wiring diagrams

Four-pole disconnectors

GE0160 T4 - GE1600 T4

GE0160 T4P



Certifications and compliance

Compliance	IEC/EN 60947-1
	IEC/EN 60947-3
Certifications	EAC

ETIM classification

ETIM 8.0	EC000216 - Switch disconnecter
----------	--------------------------------