

General characteristics

Switching diagram	68 - Voltmeter switch for phase-neutral voltages
N° of elements	2
Mounting form	U47 - Snap on front mounting with black handle for hole diam. 22mm fixing

Contact characteristics

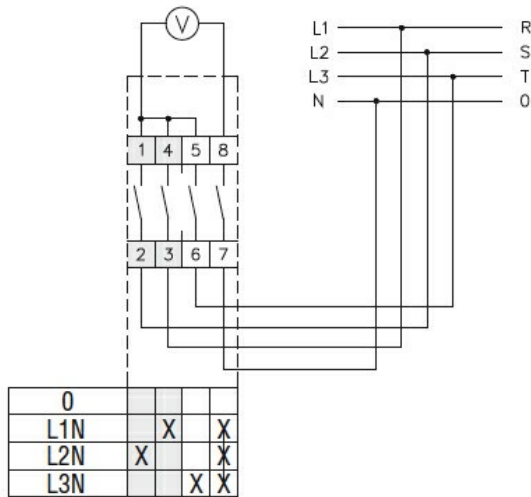
Rated insulation voltage U_i	IEC/EN	V	480	
	UL/CSA	V	240	
Rated impulse withstand voltage U_{imp}		kV	4	
Conventional free air thermal current I_{th}	IEC/EN	A	10	
	UL/CSA	A	10	
Rated operational voltage		V	480	
Rated operational impulse voltage		kV	4	
Maximum fuse size for short-circuit protection I_n (gG)	10kA	A	16	
Rated short time current I_{cw}	1s	kA	250	
Conductivity			10/5 mA/V	
Operational current I_e IEC/EN	AC1/AC21A			
		A	10	
AC15	110V	A	5	
	220/230V	A	3	
	380/400V	A	2	
Rated operational power in AC	Three-phase AC-3	220/230V	kW	1.5
		380/440V	kW	2.2
Single-phase AC-3	110V	kW	0.3	
	220/230V	kW	0.55	
	380/440V	kW	0.75	
Three-phase AC23A	220/230V	kW	1.8	
	380/440V	kW	3	
Single-phase AC23A	110V	kW	0.7	
	220/230V	kW	0.75	
	380/440V	kW	1.1	
Rated operational current in DC	DC21A	48V	A	10
		60V	A	7
		110V	A	2
		220V	A	0.7
		440V	A	0.2

DC13				
	24V	A	3	
	48V	A	3	
	60V	A	2	
	110V	A	1	
	220V	A	0.3	
	440V	A	0.1	
Power dissipation		W	0.4	
Mechanical features				
Terminals screw				2.5M
Tightening torque for terminals max		Nm	0.4	
Conductor size				
AWG - Rigid cable				
	min	AWG	20	
	Max	AWG	14	
AWG - Flexible cable				
	min	AWG	20	
	Max	AWG	14	
Conductor size (IEC) - Flexible cable				
	min	mm ²	0.5	
	Max	mm ²	1.5	
Conductor size (IEC) - Rigid cable				
	min	mm ²	0.5	
	Max	mm ²	1.5	
Mechanical life		cycles	1x10 ⁶	
UL technical data				
Motor power for direct-on-line control				
for three-phase motor				
	240V	HP	2	
for single-phase motor				
	240V	HP	0.75	
Ambient conditions				
Temperature				
Operating temperature				
	min	°C	-25	
	max	°C	+55	
Storage temperature				
	min	°C	-40	
	max	°C	+70	
Resistance & Protection				
Frontal IP degree				IP40
Terminals IP degree				IP20
Dimensions				



Series	Dimensions		L			
	□A	E	1	2	3...8	
GF10	30	18.5	60	72	84	144
GF20	48	26.5	56	69.5	83	150.5

Wiring diagrams



Certifications and compliance

Compliance

CSA C22.2 n° 14
IEC/EN/BS 60947-1
IEC/EN/BS 60947-3
IEC/EN/BS 60947-5-1
UL60947-4-1

Certificates

cULus
EAC

ETIM classification

ETIM 8.0

EC001029 -
Selector switch,
complete