

General characteristics

Switching diagram	69 - Changeover switch without 0 4 poles
N° of elements	4
Mounting form	U12 - Front mounting without front plate with key operation for hole diam. 22mm fixing

Contact characteristics

Rated insulation voltage U_i	IEC/EN	V	690
	UL/CSA	V	600
Rated impulse withstand voltage U_{imp}		kV	6
Conventional free air thermal current I_{th}	IEC/EN	A	20
	UL/CSA	A	15
Rated operational voltage		V	440
Rated operational impulse voltage		kV	4
Maximum fuse size for short-circuit protection I_n (gG)	10kA	A	20
	15kA	A	20
	25kA	A	20
Rated short time current I_{cw}	1s	kA	250
			10/5 mA/V
Conductivity			
Operational current I_e IEC/EN	AC1/AC21A		
		A	20
	AC15		
	110V	A	10
	220/230V	A	8
380/400V	A	6	
660/690V	A	1.5	
Rated operational power in AC	Three-phase AC-3		
	220/230V	kW	3.7
	380/440V	kW	5.5
	500/690V	kW	5.5
	Single-phase AC-3		
	110V	kW	0.75
	220/230V	kW	1.8
	380/440V	kW	3
	Three-phase AC23A		
	220/230V	kW	4
	380/440V	kW	7.5
	500/690V	kW	7.5
Single-phase AC23A			
110V	kW	0.75	
220/230V	kW	2.2	
380/440V	kW	3.5	

Rated operational current in DC

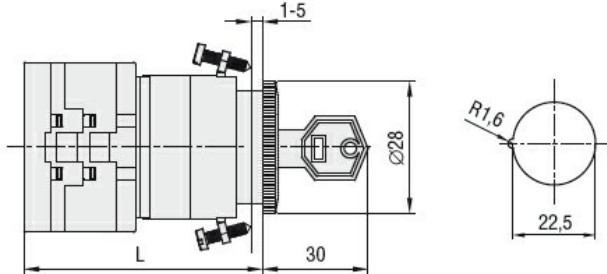
DC21A				
	48V	A		20
	60V	A		20
	110V	A		4
	220V	A		0.6
	440V	A		0.25
DC23A (poles in series)				
	24V	A		20 (1)
	48V	A		20 (2)
	60V	A		20 (3)
	110V	A		10 (3)
	220V	A		8 (4)
DC13				
	24V	A		20
	48V	A		16
	60V	A		12
	110V	A		1
	220V	A		0.4
	440V	A		0.15
Power dissipation		W		0.6
Mechanical features				
Terminals screw				M3
Tightening torque for terminals max		Nm		0.8
Conductor size				
AWG - Rigid cable				
	min	AWG		20
	Max	AWG		12
AWG - Flexible cable				
	min	AWG		20
	Max	AWG		12
Conductor size (IEC) - Flexible cable				
	min	mm ²		0.5
	Max	mm ²		2.5
Conductor size (IEC) - Rigid cable				
	min	mm ²		0.5
	Max	mm ²		2.5
Mechanical life		cycles		1X10 ⁶
UL technical data				
Motor power for direct-on-line control				
for three-phase motor				
	120V	HP		1.5
	240V	HP		3
	480V	HP		5
	600V	HP		5
for single-phase motor				
	120V	HP		0.75
	240V	HP		1.5
Ambient conditions				
Temperature				
Operating temperature				
	min	°C		-25
	max	°C		+55
Storage temperature				
	min	°C		-40

max °C +70

Resistance & Protection

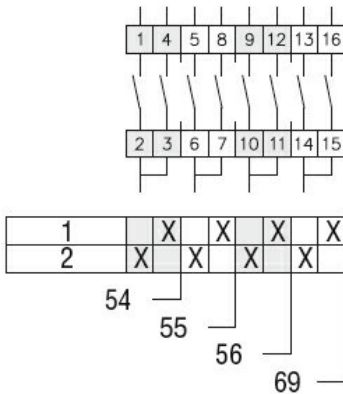
Frontal IP degree	IP65
Terminals IP degree	IP20

Dimensions



Series	L			
	1	2	3...8	
GX16	54	62.5	71	113.4
GX20	54	62.5	71	113.4

Wiring diagrams



Certifications and compliance

Compliance

- CSA C22.2 n° 14
- IEC/EN/BS 60947-1
- IEC/EN/BS 60947-3
- IEC/EN/BS 60947-5-1
- IEC/EN/BS 61058-1
- UL60947-4-1

Certificates

- cULus
- EAC

ETIM classification

ETIM 8.0

EC001029 -
Selector switch,
complete