



### Input characteristics

Control voltage	24...255VAC/DC		
Operating voltage limits			
	Operating voltage pick-up	V	24
	Operating voltage drop-out	V	2
Input current at min...max voltage	mA	4.5...6	

### Operating times

Switching-on	Half cycle max
Switching-off	Half cycle max

### Output characteristics

Static output type	SCR (silicon controlled rectifier)		
Switching mode	Zero crossing		
Rated operating voltage	VAC	24...520	
Blocking voltage	V	1600	
Operational frequency (min...max)	Hz	45...65	
Rated operating current AC-51 (resistive load) at 40°C	A	24	
Rated operating current AC-51 (resistive load) at 55°C	A	18	
Rated operating current AC-53 (motor load) at 40°C	A	12	
Operational current min	A	0.05	
Non repetitive surge peak on state current t=10ms	A	750	
Off state leakage current	mA	1	
On state output voltage drop	V	1	
Critical rate of rise of off-state voltage dv/dt	V/μs	500	
Input - Output isolation	V	4000	
Input - Output to metal base	V	4000	
Output protection type	VDR		
I <sup>2</sup> t	A <sup>2</sup> s	2800	

### Terminal characteristics

Control terminals	Type	Screw M4	
Terminals tool	PZ2		
Tightening torque control terminals			
	Nm	1.2...2	
	Ibin	10.6...17.7	
Conductor section connectable (control terminals) with 1 or 2 wires min...max			
	AWG stranded	n°	18...14
	Flexible w/o lug	mm <sup>2</sup>	0.75...2.5
	Flexible c/w insulated spade lug	mm <sup>2</sup>	0.75...2.5
Load terminals	Type	Screw M5	
Load terminals tool	PZ2		
Tightening torque load terminals			
	Nm	2...3	
	Ibin	20.4	
Conductor section connectable (load terminals) with 1 or 2 wires min...max			

AWG stranded	n°	16...10
Flexible w/o lug	mm2	1.5...6
Flexible c/w insulated spade lug	mm2	1.5...6

Operating position

allowable

Any

Fixing

Screw

**Ambient conditions**

Temperature

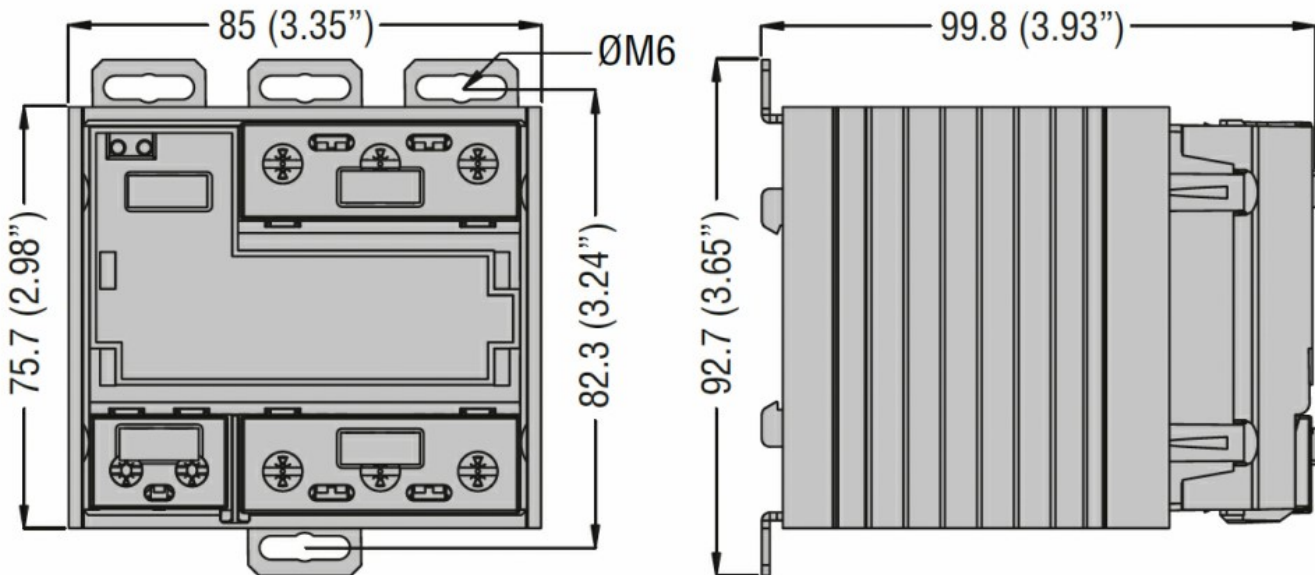
Operating temperature

min	°C	-40
max	°C	+90

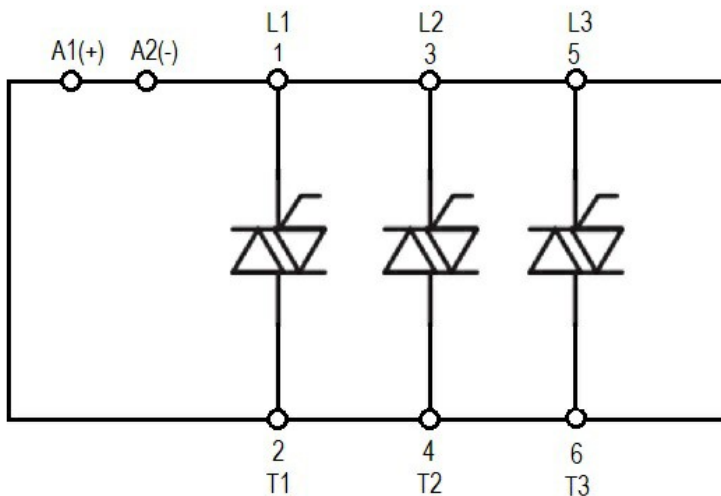
Storage temperature

min	°C	-40
max	°C	+125

**Dimensions**



**Wiring diagrams**



**Certifications and compliance**

Certifications

IEC/EN/BS 60335-1  
IEC/EN/BS 60947-4-2

---

IEC/EN/BS 60947-4-3

---

IEC/EN/BS 62314

---

Compliance

cULus

**ETIM classification**

EC000066 - Power contactor, AC switching