



General characteristics

Diameter	mm - inch	50 / 1.97
Material		Metal

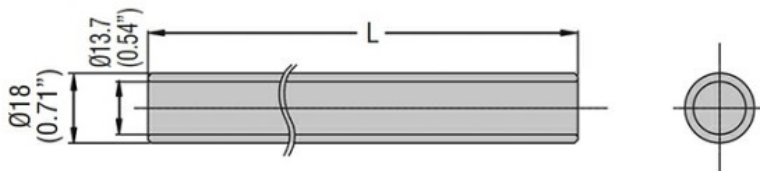
Mechanical features

Weight	g	28
--------	---	----

Ambient conditions

Temperature	Operating temperature	min	°C	-30
		max	°C	+50

Dimensions



Type	L (mm/in)
LTP50P050	50 (1.97")
LTP50P100	100 (3.94")
LTP50P250	250 (9.84")
LTP50P400	400 (15.75")

Certifications and compliance

Compliance

CSA C22.2 n° 14
 IEC/EN/BS 60947-1
 IEC/EN/BS 60947-5-1
 UL508

Certificates

cULus

ETIM classification

ETIM 8.0

EC001155 -
 Tube for signal
 tower