



Signal tower  
Ø70mm/2.75"  
LTN70

Product designation

Product type designation

**General characteristics**

Diameter mm - inch 70 / 2.75

Material Metal

**Mechanical features**

Weight g 43

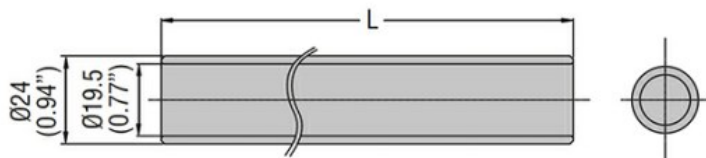
**Ambient conditions**

Temperature

Operating temperature

min °C -30  
max °C +50

**Dimensions**



Type	L (mm/in)
LTP70P050	50 (1.97")
LTP70P100	100 (3.94")
LTP70P250	250 (9.84")
LTP70P400	400 (15.75")

**Certifications and compliance**

Compliance

CSA C22.2 n° 14  
IEC/EN/BS 60947-1  
IEC/EN/BS 60947-5-1  
UL508

Certificates

cULus

**ETIM classification**

ETIM 8.0

EC001155 -  
Tube for signal  
tower