



General characteristics

Diameter	mm - inch	70 / 2.75
Material		Metal

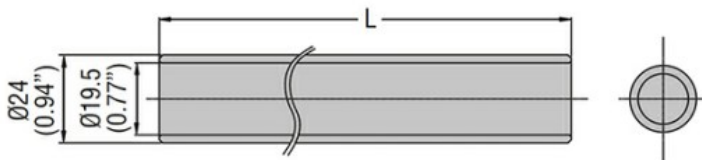
Mechanical features

Weight	g	105
--------	---	-----

Ambient conditions

Temperature	Operating temperature			
		min	°C	-30
		max	°C	+50

Dimensions



Type	L (mm/in)
LTP70P050	50 (1.97")
LTP70P100	100 (3.94")
LTP70P250	250 (9.84")
LTP70P400	400 (15.75")

Certifications and compliance

Compliance

CSA C22.2 n° 14
IEC/EN/BS 60947-1
IEC/EN/BS 60947-5-1
UL508

Certificates

cULus

ETIM classification

ETIM 8.0

EC001155 -
Tube for signal
tower