



**General characteristics**

Diameter	mm - inch	70 / 2.75
Material		Metal

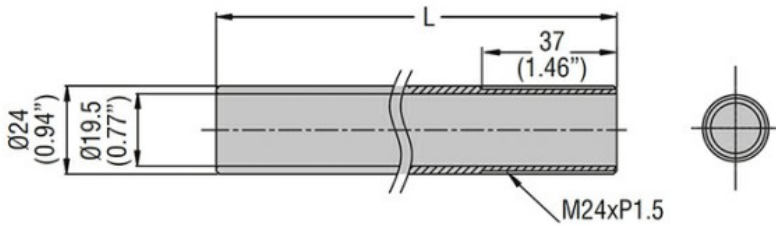
**Mechanical features**

Weight	g	163
--------	---	-----

**Ambient conditions**

Temperature	Operating temperature			
		min	°C	-30
		max	°C	+50

**Dimensions**



Type	L (mm/in)
LTP70P050T	50 (1.97")
LTP70P100T	100 (3.94")
LTP70P250T	250 (9.84")
LTP70P400T	400 (15.75")

**Certifications and compliance**

Compliance	CSA C22.2 n° 14
	IEC/EN/BS 60947-1
	IEC/EN/BS 60947-5-1
	UL508

**Certificates**

cULus

**ETIM classification**

ETIM 8.0

EC001155 -  
Tube for signal  
tower