



#### Electrical features

Maximum operating current ( $\leq 440V$ )	A	25
---	---	----

#### Components

Starter enclosure standard supplied	M2RA
Contactor standard supplied	BF2510A
Thermal relay to purchase separately	RF38...

#### UL technical data

UL degree of protection	Type 1, 12K, 4, 4X
-------------------------	--------------------

#### Mechanical features

Weight	g	1020
--------	---	------

#### Ambient conditions

Operating temperature	min	°C	-25
	max	°C	+60

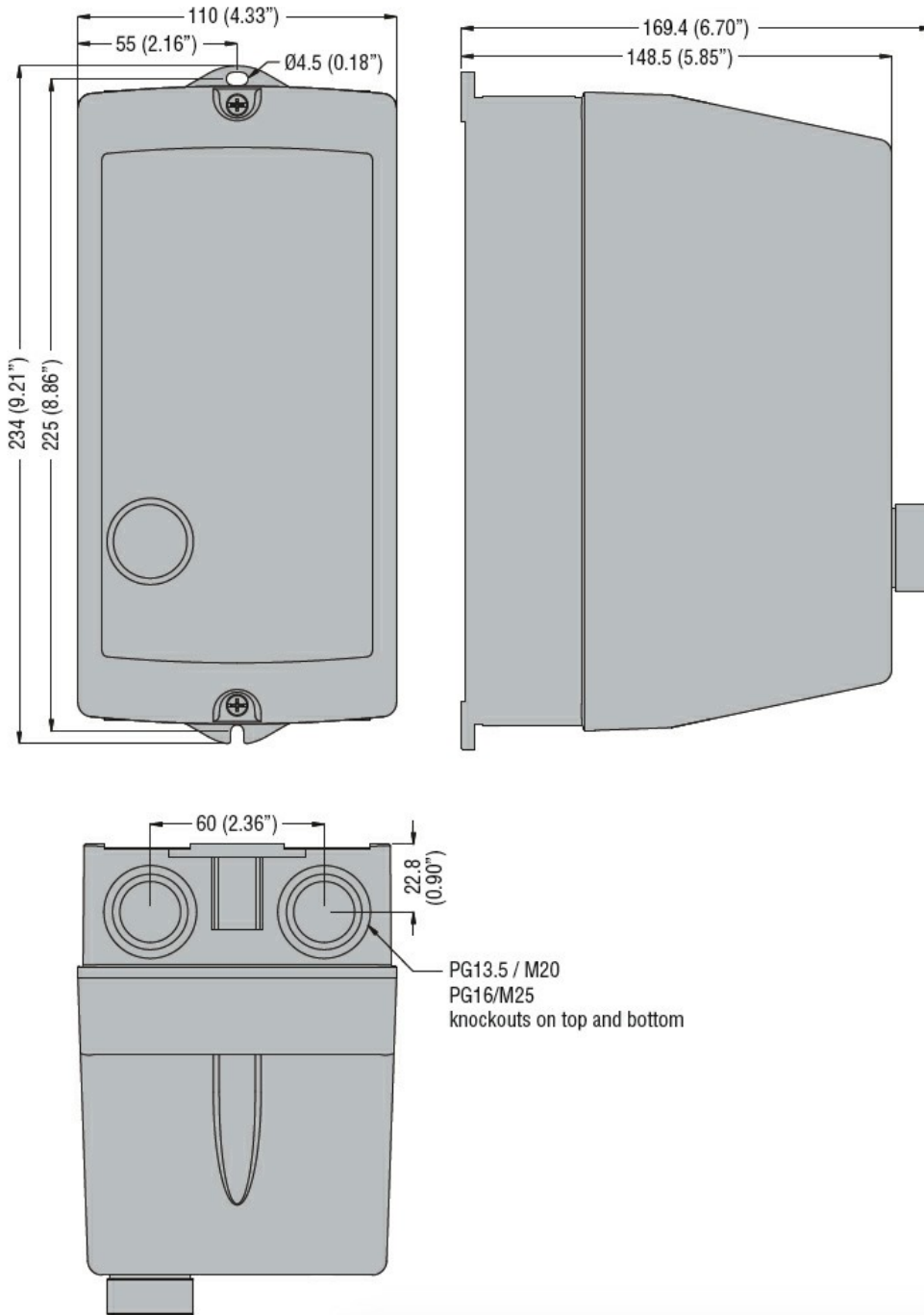
#### Storage temperature

min	°C	-40
max	°C	+70

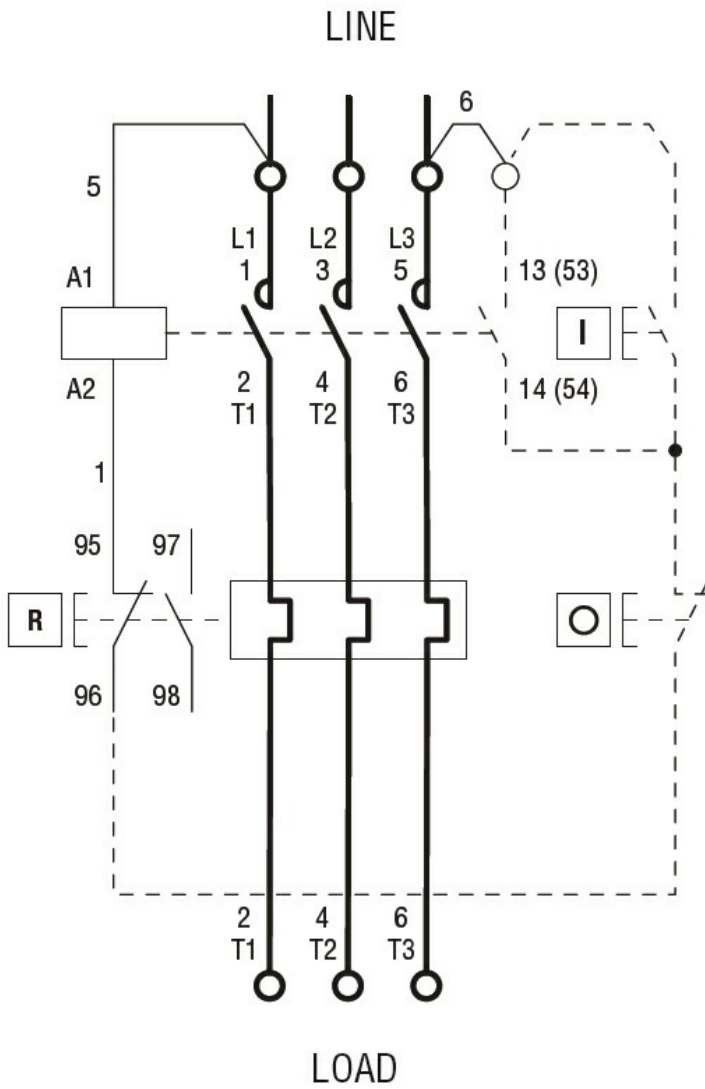
#### Resistance & Protection

IEC degree of protection	IP65
--------------------------	------

#### Dimensions



Wiring diagrams



R = Reset; I = Start; O = Stop

### Certifications and compliance

#### Compliance

IEC/EN 60947-1  
IEC/EN 60947-4-1  
UL508 CSA C22.2 n° 14

#### Certificates

CSAus  
cULus  
EAC

### ETIM classification

ETIM 8.0

EC001037 -  
Motor  
starter/Motor  
starter  
combination