



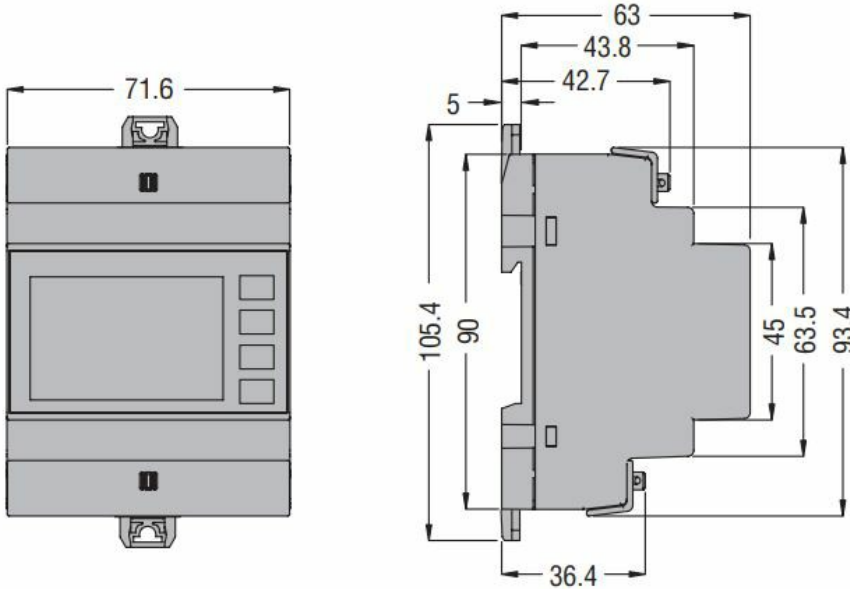
General characteristics

Description	System with or without neutral. Dual threshold minimum and maximum voltage and frequency protection. ROCOF and Vector shift		
Type of system	Single-phase and three-phase, with and without neutral		
Power supply			
Operating voltage range			22...264VAC / 22...264VDC
Rated frequency	Hz	45...55	
Power consumption Max	VA	6.2	
Power dissipation Max	W	2	
Auxiliary supply			
Rated auxiliary supply voltage Us			
AC	min	VAC	24
	Max	VAC	240
DC	min	VDC	24
	Max	VDC	240
Power consumption			
AC (Max)	VA	2.5VA at 24VAC; 6.2VA at 240VAC	
DC (Max)	VA	60mA at 24VDC; 7mA at 240VDC	
Power dissipation			
AC (Max)	W	1.6W at 24VAC; 2W at 240VAC	
DC (Max)	W	1.5W at 24VDC; 1.7W at 240VDC	

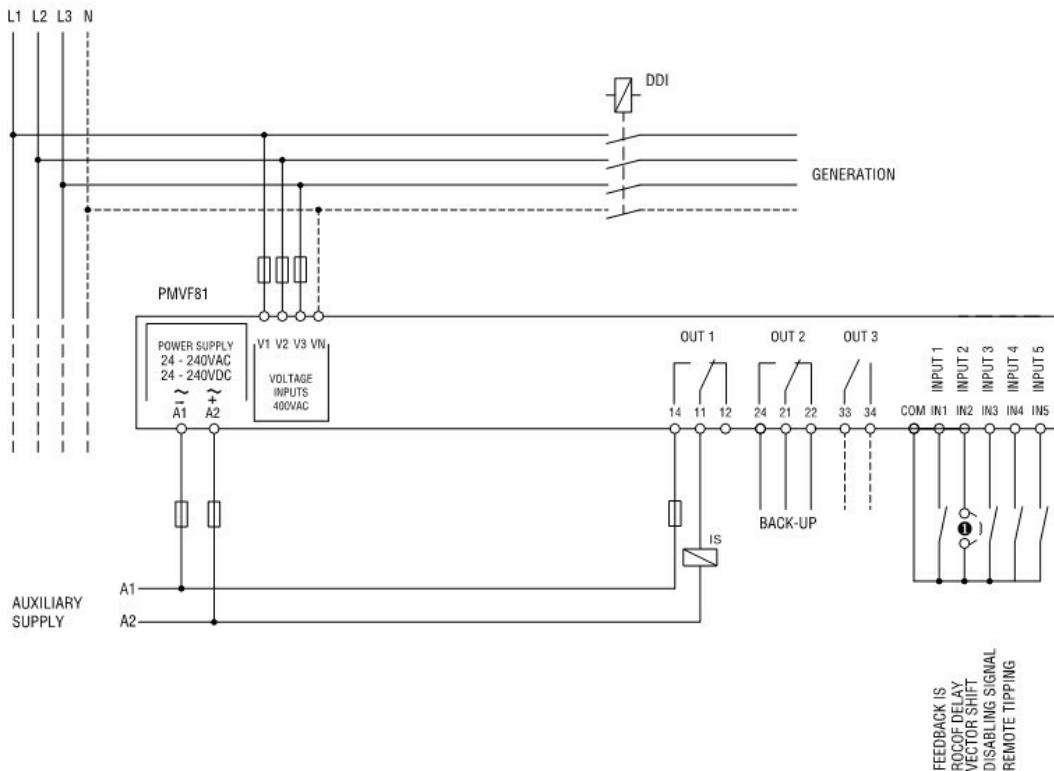
		MODULAR TYPE (4U)	
Immunity time for microbreakings	ms		240VAC 50Hz ≤2000ms 240VDC ≤1000ms 24VAC 50Hz ≤30ms 24VDC ≤15ms
Voltage inputs			
Maximum rated operational voltage			400VAC L-L; 230VAC L-N 50Hz
Measurement range	V		10...520VAC L-L; 5...300VAC L-N
Frequency range	Hz		45...55
Current inputs			
Measurement method			TRMS
Relay outputs			
Number of relays	Nr.		3
Contact arrangement			2 changeover contacts + 1NO
Rated operational voltage AC (IEC)	VAC		250
UL/CSA and IEC/EN 60947-5-1 designation			For OUT1-OUT2 contact: 8A 250VAC AC1/C300, 8A 30VDC For OUT3 contact: 2A 250VAC AC1/C300; 2A 30VDC
Digital inputs			
Number and type of inputs			5 to be used with dry contact with common terminal
Input current	mA		6
Connections			
Terminals type			Screw - removable
Tightening torque for terminals		max Nm	0.44
		max lbin	4
Conductor cross section			
AWG/Kcmil		min AWG	24
		Max AWG	12
IEC		min mm ²	0.2
		Max mm ²	2.5
Insulations			
Rated insulation voltage Ui	V		300
Housing			
Execution (n° of modules)			4
Material			Polyamide

Mounting	35mm DIN rail or screw-type by means of clips removable	
IEC degree of protection	IP40 on front; IP20 at terminals	
Dimensions (W x H x D)	mm	71.6 x 105.4 x 63
Weight	g	326

Dimensions



Wiring diagrams



Certifications and compliance

Compliance

IEC/EN 61000-6-2
IEC/EN 61000-6-4

INTERFACE PROTECTION SYSTEM UNITS COMPLIANT WITH VDE-AR-N 4105, VDE-AR-N 4110, VDE-AR-N 4120 AND VDE V 0126-1-1 FOR SINGLE-PHASE AND THREE-PHASE SYSTEM WITH AND WITHOUT LOW VOLTAGE NEUTRAL, DUAL THRESHOLD MINIMUM AND MAXIMUM VOLTAGE AND FREQUENCY PROTECTION, R.O.C.O.F. AND VECTOR SHIFT.

IEC/EN 61010-1

VDE V 0126-1-1

VDE-AR-N 4105

VDE-AR-N 4110

VDE-AR-N 4120

Certificates

VDE

ETIM classification

ETIM 8.0

EC001438 -
Voltage
monitoring relay