



General characteristics

Description	For system requiring three maximum voltage thresholds
Type of system	Single-phase and three-phase, with and without neutral

Power supply

Operating voltage range	22...264VAC / 22...264VDC
Rated frequency	Hz 45...55
Power consumption Max	VA 6.2
Power dissipation Max	W 2

Auxiliary supply

Rated auxiliary supply voltage Us	AC	min	VAC	24
		Max	VAC	240
	DC	min	VDC	24
		Max	VDC	240

Power consumption

AC (Max)	VA	2.5VA at 24VAC; 6.2VA at 240VAC
	VA	60mA at 24VDC; 7mA at 240VDC

Power dissipation

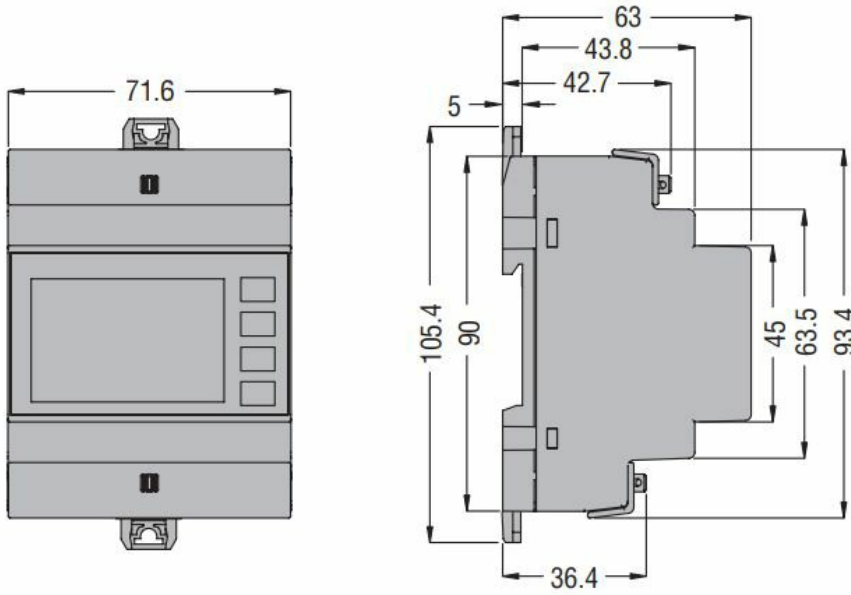
AC (Max)	W	1.6W at 24VAC; 2W at 240VAC
	W	1.5W at 24VDC; 1.7W at 240VDC

Immunity time for microbreakings	ms	240VAC 50Hz	≤2000ms
		240VDC	≤1000ms
		24VAC 50Hz	≤30ms
		24VDC	≤15ms

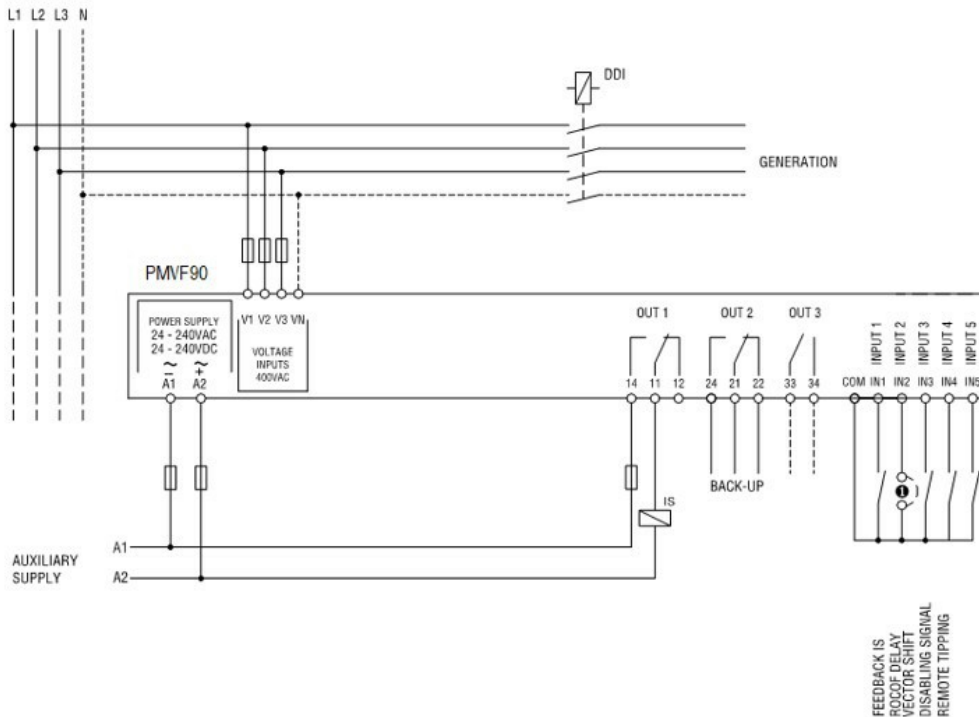
Voltage inputs

Maximum rated operational voltage				400VAC L-L; 230VAC L-N 50Hz
Measurement range		V		10...520VAC L-L; 5...300VAC L-N
Frequency range		Hz		45...55
Current inputs				
Measurement method				TRMS
Relay outputs				
Number of relays		Nr.		3
Contact arrangement				2 changeover contacts + 1NO
Rated operational voltage AC (IEC)		VAC		250
UL/CSA and IEC/EN 60947-5-1 designation				For OUT1-OUT2 contact: 8A 250VAC AC1/C300, 8A 30VDC For OUT3 contact: 2A 250VAC AC1/C300; 2A 30VDC
Digital inputs				
Number and type of inputs				5 to be used with dry contact with common terminal
Input current		mA		6
Connections				
Terminals type				Screw - removable
Tightening torque for terminals		max	Nm	0.44
		max	lbin	4
Conductor cross section				
	AWG/Kcmil	min	AWG	24
		Max	AWG	12
	IEC	min	mm ²	0.2
		Max	mm ²	2.5
Insulations				
Rated insulation voltage Ui		V		300
Housing				
Execution (n° of modules)				4
Material				Polyamide
Mounting				35mm DIN rail or screw-type by means of clips removable
IEC degree of protection				IP40 on front; IP20 at terminals
Dimensions (W x H x D)		mm		71.6 x 105.4 x 63
Weight		g		326

Dimensions



Wiring diagrams



Certifications and compliance

Compliance

IEC/EN 61000-6-2

IEC/EN 61000-6-4

IEC/EN 61010-1

ETIM classification

ETIM 8.0

EC001438 -
Voltage
monitoring relay