

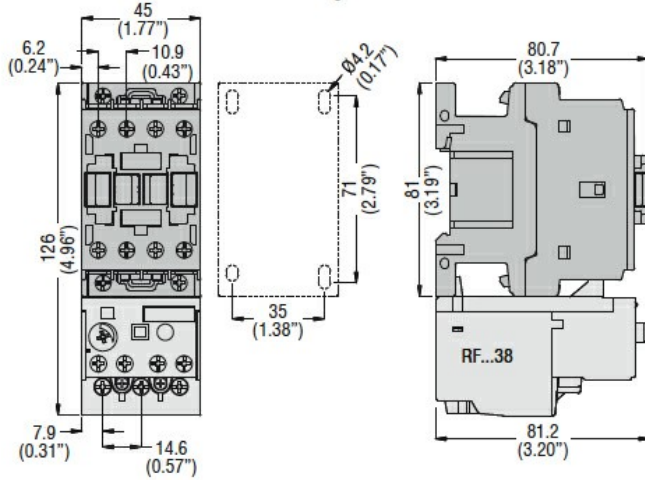


General characteristics			
Number of poles	Nr.		3
Overvoltage category			III
Pollution degree			3
Frontal IP degree			IP20
Type of release			Thermal
Protection fuse	aM (IEC)	A	0.5
	RK5 (UL)	A	1
Phase failure detection			yes
Reset mode			Manual or automatic
Power circuit characteristics			
Rated insulation voltage $U_i$ IEC/EN	V		690
Rated impulse withstand voltage $U_{imp}$	kV		6
Rated operational voltage	V		690
Operational frequency	min	Hz	0
	max	Hz	400
Operational current $I_e$	Operational current min	A	0.16
	Operational current max	A	0.25
Tripping class			10A
Test Button			Yes
Trip indicator			yes
Terminals	type		screw and washer
	screw		M4
	width	mm	12.6
	tool		Phillips 2
Tightening torque for terminals	min	Nm	2
	max	Nm	2.5
	min	lbin	1.5
	max	lbin	1.8
Conductor section	Flexible w/o lug max	mm <sup>2</sup>	10
	Flexible c/w lug max	mm <sup>2</sup>	6
	AWG/kcmil max		8
Auxiliary circuit characteristics			
Auxiliary contacts	NO	Nr.	1
	NC	Nr.	1
Auxiliary Rated insulation voltage $U_i$ IEC/EN	V		690

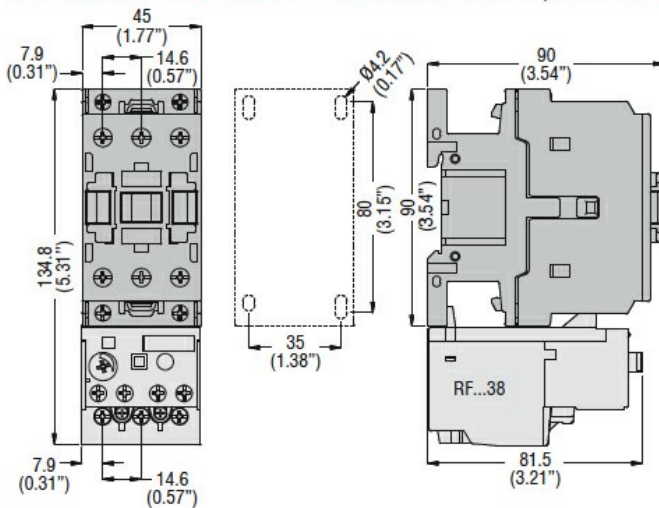
Auxiliary Rated impulse withstand voltage U <sub>imp</sub>		kV	6
Auxiliary Rated operational voltage		V	690
Operating current AC15	24V	A	3
	120V	A	3
	240V	A	1.5
	380V	A	0.95
	480V	A	0.75
	500V	A	0.72
	600V	A	0.6
Operating current DC13	125V	A	0.11
	600V	A	0.22
IEC Conventional free air thermal current I <sub>th</sub> ≤ 40°C		A	10
<b>Terminals</b>			
	Auxiliary circuit type		screw and washer
	Auxiliary circuit screw		M3.5
	Auxiliary circuit width	mm	8
	Auxiliary circuit tool		Phillips 2
<b>Conductor section</b>			
	Auxiliary circuit Flexible w/o lug max	mm <sup>2</sup>	2.5
	Auxiliary circuit Flexible c/w lug max	mm <sup>2</sup>	2.5
<b>Tightening torque for terminals</b>			
	Auxiliary circuit min	Nm	0.8
	Auxiliary circuit max	Nm	1
	Auxiliary circuit min	lbin	0.59
	Auxiliary circuit max	lbin	0.74
UL/CSA and IEC/EN 60947-5-1 designation			B600-R300
<b>Ambient conditions</b>			
<b>Operating temperature</b>			
	min	°C	-25
	max	°C	60
<b>Storage temperature</b>			
	min	°C	-50
	max	°C	70
<b>Compensation temperature</b>			
	min	°C	-20
	max	°C	60
Max altitude		m	3000
<b>Mechanical features</b>			
<b>Operating position</b>			
	normal allowable		Vertical plan ±30°
Fixing			Direct mounting on BF09... BF38...
Weight		g	160
<b>UL technical data</b>			
<b>Full-load current (FLA) for three-phase AC motor</b>			
	at 480V	A	0.25
	at 600V	A	0.25

**Dimensions**

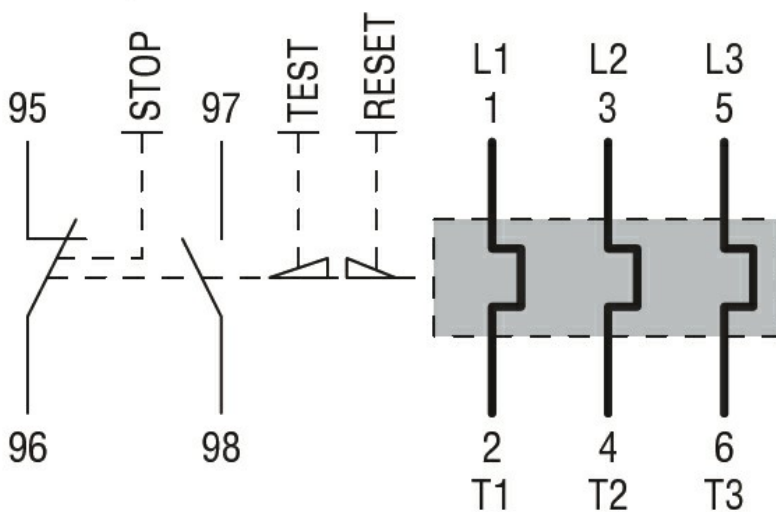
**BF00 A... BF09 A... - BF12 A... - BF18 A... - BF25 A...** three poles with **RF...38** thermal overload relay



**BF26 00A... - BF32 00A... - BF38 00A...** three poles with **RF...38** thermal overload relay



**Wiring diagrams**



**Certifications and compliance**

**Compliance**

CSA C22.2 n° 14

IEC/EN 60947-1

IEC/EN 60947-4-1

---

UL508

---

Certifications

CCC

---

cULus

---

EAC

ETIM classification

ETIM 8.0

EC000106 -  
Thermal overload  
relay